

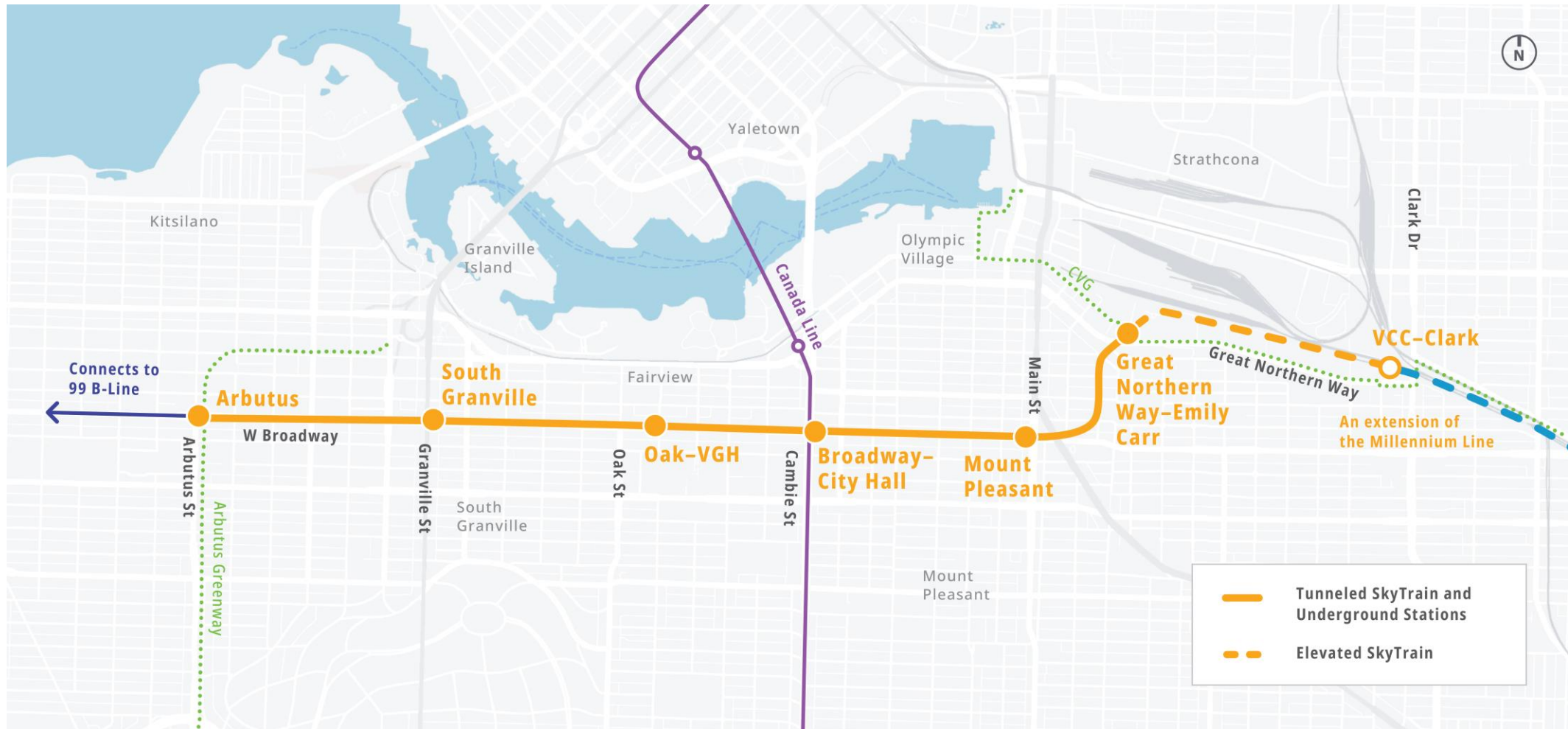


# Broadway Subway Project

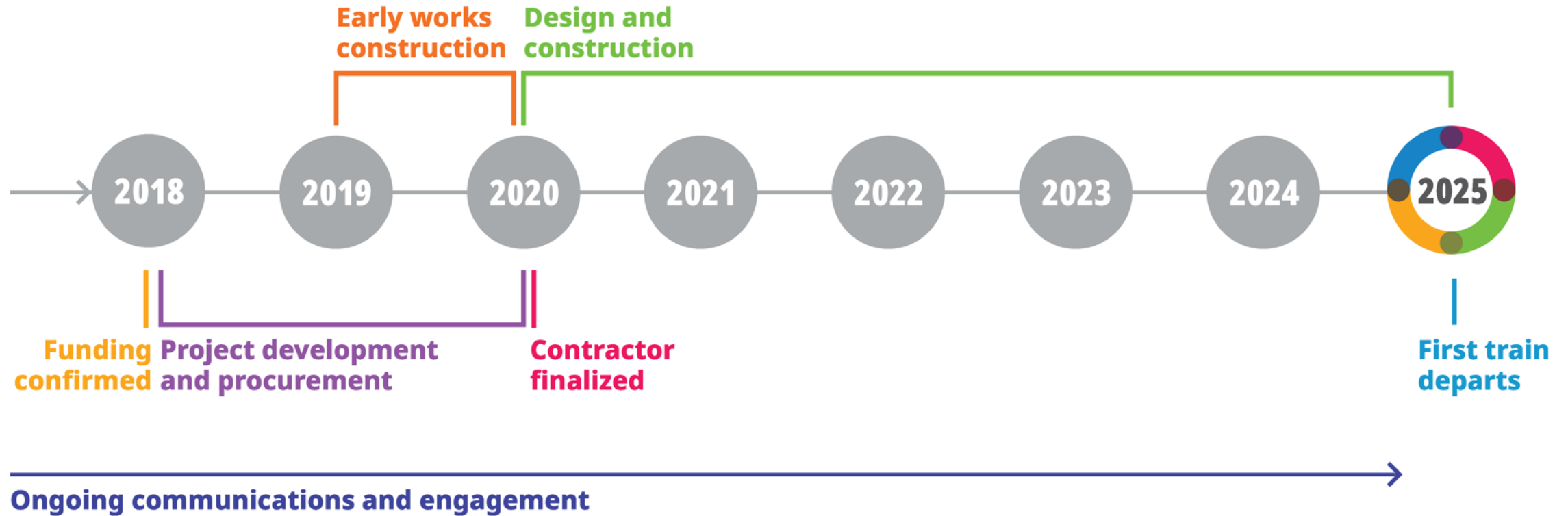
Business Engagement Meetings  
Summer/Fall 2020



# Alignment Overview

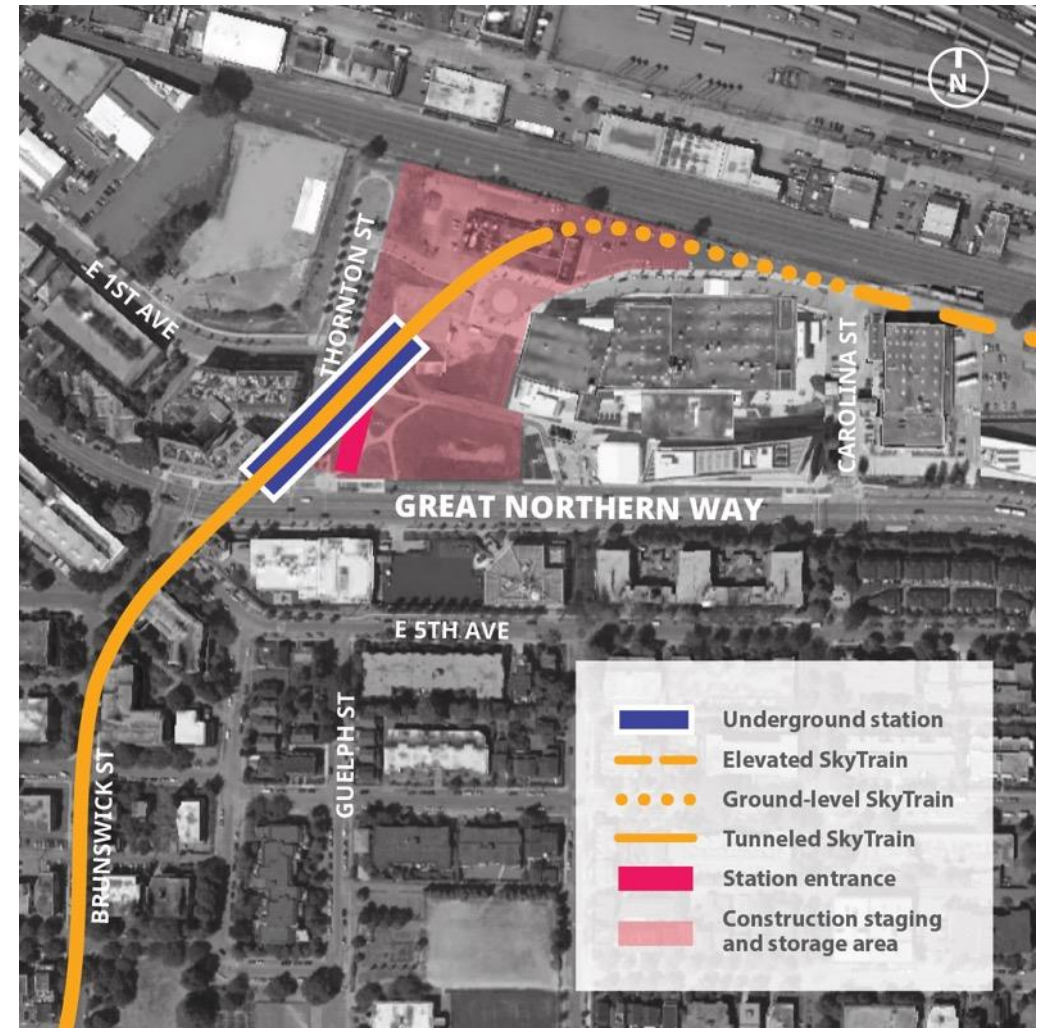


# Project Overall Schedule



# Great Northern Way-Emily Carr Station

- On the east side of Thornton Street, just north of Great Northern Way.
- Facilitates access to Great Northern Way Campus including the Emily Carr University of Art and Design and the Centre for Digital Media, as well as the emerging creative economy hub in the False Creek Flats.



# Great Northern Way-Emily Carr Station – Looking Northeast



*Artist's renderings of preliminary conceptual station design. Final streetscape and development will be subject to the City of Vancouver's Broadway Plan.*

# Great Northern Way-Emily Carr Station – Looking Southeast



*Artist's renderings of preliminary conceptual station design. Final streetscape and development will be subject to the City of Vancouver's Broadway Plan.*

# Mount Pleasant Station

- Southwest corner of Broadway and Main Street
- Connectivity to the growing business and residential community in Mount Pleasant.



# Mount Pleasant Station



Artist's rendering of preliminary conceptual station design. Final streetscape and potential development will be subject to the City of Vancouver's Broadway Plan.

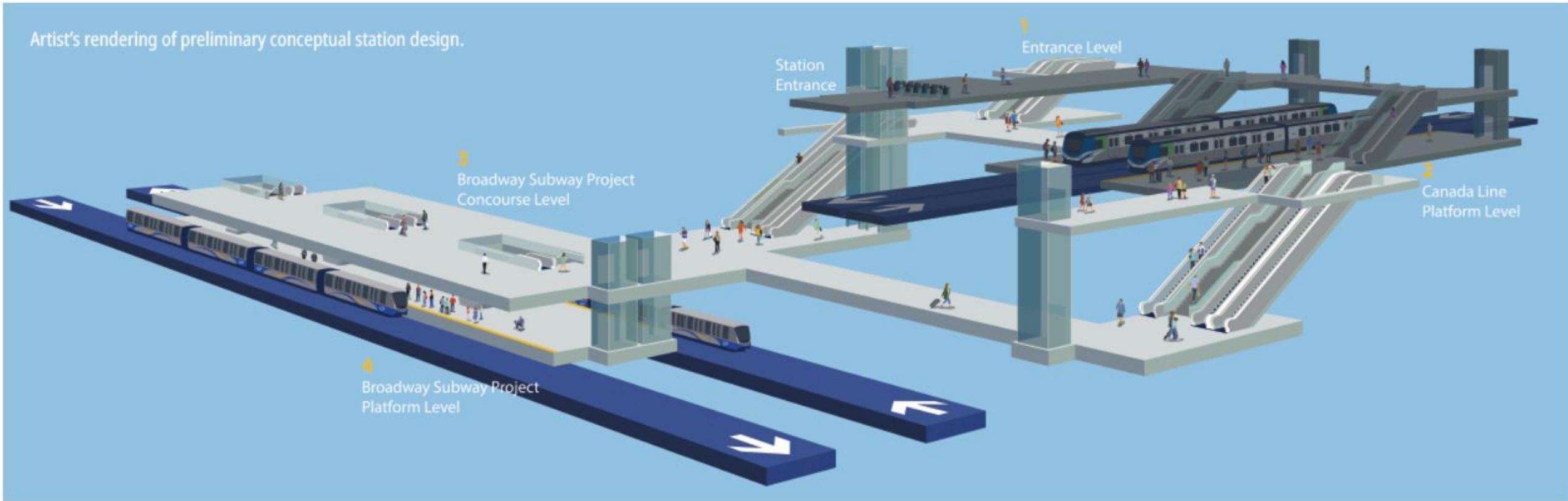
# Broadway-City Hall Station

- Southeast corner of Cambie and Broadway – using the existing entrance to the Canada Line
- Convenient underground connection between the Millennium and Canada lines - passengers can transfer between the two lines within the same underground station; more direct connection to YVR



# Broadway-City Hall Station

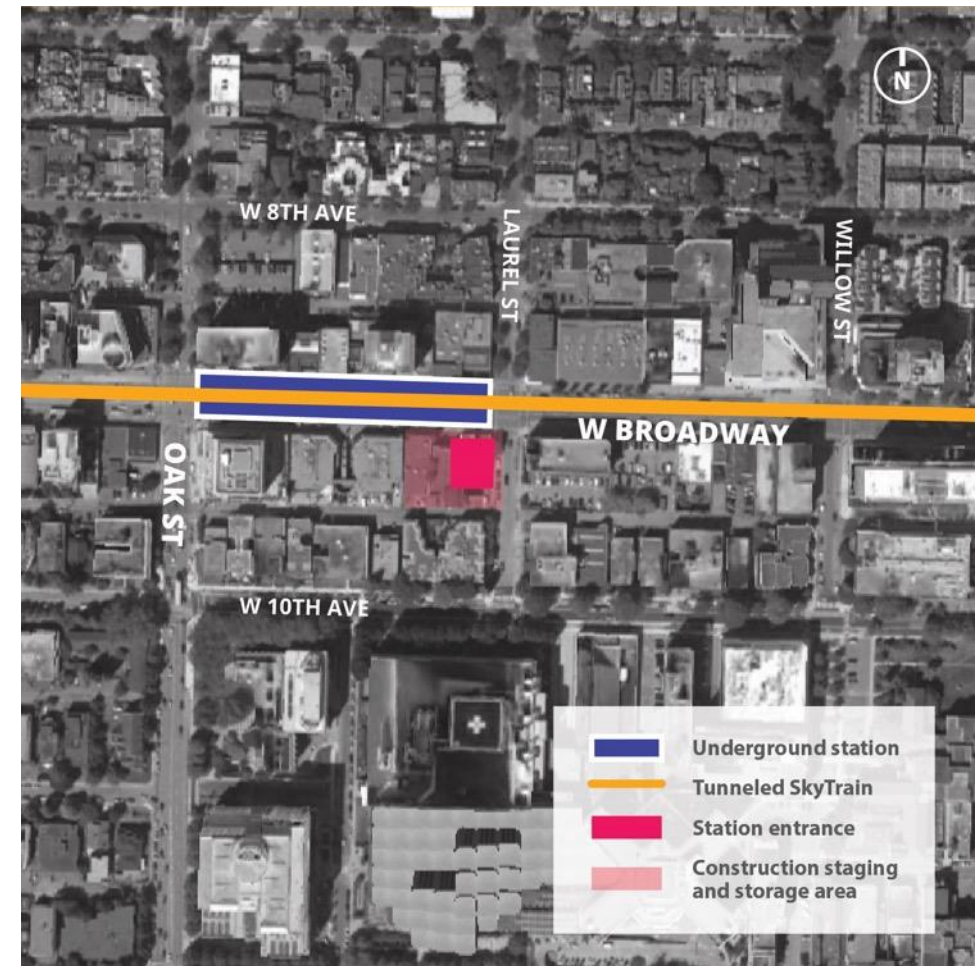
Artist's rendering of preliminary conceptual station design.



Artist's renderings of preliminary conceptual station design. Final streetscape will be subject to the City of Vancouver's Broadway Plan.

# Oak-VGH Station

- Southwest corner of Broadway and Laurel Street, near Oak Street.
- Better access to Vancouver General Hospital and the rest of the medical district



# Oak-VGH Station



Artist's rendering of preliminary conceptual station design. Final streetscape and potential development will be subject to the City of Vancouver's Broadway Plan.

# South Granville Station

- Northeast corner of Broadway and Granville Street.
- Integrated station on Skytrain – station box constructed by PCI Group, completed by Project Co.
- Near South Granville, Burrard Slopes and Granville Island neighbourhoods.



# South Granville Station



Artist's rendering of preliminary conceptual station design. Final streetscape and development will be subject to the City of Vancouver's Broadway Plan.

# Arbutus Station

- Arbutus Station and bus loop at northeast corner of Broadway and Arbutus
- Adjacent to Arbutus Greenway
- Will connect passengers with 99 B-Line bus service between Arbutus and UBC



# Arbutus Station – Looking Southeast



*Artist's renderings of preliminary conceptual station design. Final streetscape will be subject to the City of Vancouver's Broadway Plan.*

# Arbutus Station – Looking North



*Artist's renderings of preliminary conceptual station design. Final streetscape will be subject to the City of Vancouver's Broadway Plan.*

# Station Features

- Up and down escalators and elevators
- Crime Prevention Through Environmental Design principles
- Clear wayfinding and passenger information
- Accessible surfaces, such as tactile strips
- Capacity to accommodate future passenger growth

# Construction

**Construction is anticipated to start in fall 2020, with the line in service in 2025.**

- The project will be mainly constructed using tunnel boring machines.
- Street-level construction and excavation can be expected in areas and blocks where stations will be constructed, and at each end of the line.
- The contractor will be required to:
  - Implement mitigation measures for noise, light and dust.
  - Maintain safe access to schools, businesses and residential areas.
- Fall – Winter 2020 activities include completion of design, site preparation and demolition of buildings to be used for station locations and laydown areas, and ongoing utility relocations.
- Construction of the stations, the elevated guideway and the tunnel portal is expected to begin in 2021.
- Tunneling is expected to start in 2022.

# Early Works

Early works started in February 2019 to prepare for subway construction anticipated to begin in the fall of 2020.

## Trolley Wire Relocation

- The 14, 16 and 17 trolley bus routes have been rerouted to keep Broadway safe for workers and equipment while keeping buses, people and traffic moving during construction of the project.
- 9 and 99 will remain on Broadway throughout construction.
- Overhead wires removed at station locations

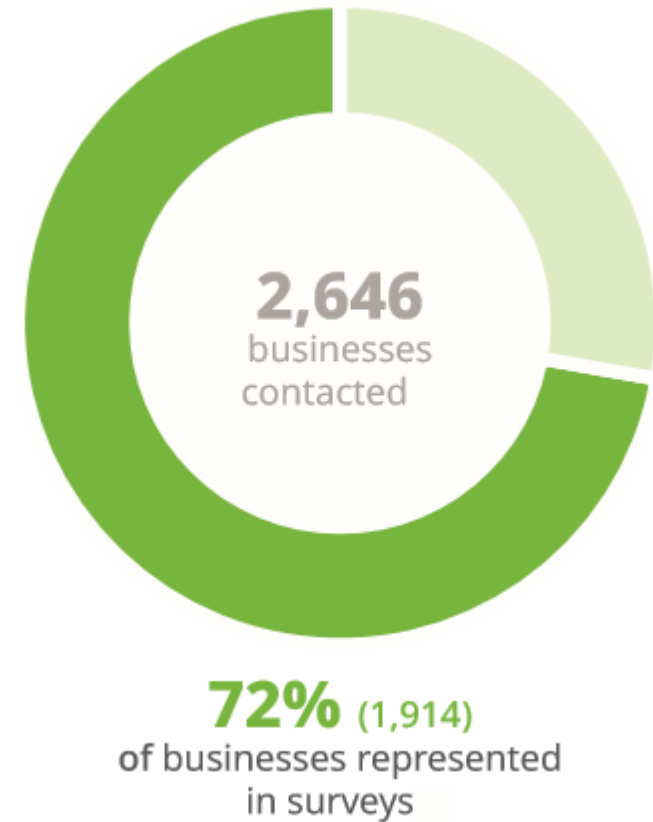
## Advance Utility Works

- Some utilities near the station locations are being relocated including electrical, telecommunications, water and sewer.

# Business Survey:

**Completed: July – August 2019**

- Door to Door & Floor to Floor along Broadway, 8th Ave, 10th Ave and cross streets between Kingsway and Vine
- Foundational Baseline Information Gathering



# Business Survey – What we've heard so far



General Support for  
the project



Questions:

- Traffic
- Parking
- Deliveries
- Accessibility (all modes and abilities)
- Visibility of businesses



Importance of  
communication and  
information sharing

# Traffic Management

**Ensuring safe and effective traffic management during construction is a priority:**

- Pedestrian access for all abilities will be maintained to local businesses, residences, medical services
- 10<sup>th</sup> Avenue cycling route will be maintained
- Some sections of Arbutus/Central Valley greenways will be rerouted to safe cycling detour routes
- Access for vehicles, buses, emergency vehicles will be maintained
- Generally, there will be three lanes of traffic in each direction along Broadway with one lane dedicated for buses (routes 9 & 99)
- In station construction areas, generally two lanes of traffic will be maintained in each direction for buses and other vehicles, with the exception of Broadway at Main St

# Parking

- Currently, parking is restricted on Broadway for about seven hours each weekday, in the morning and afternoon peak periods, with the curb lane dedicated to buses, taxis and cyclists.
- We anticipate this will be extended 24/7 to support the efficient movement of buses and all traffic throughout the construction period.
- We are working with the City to develop a parking management plan to address parking needs along the Broadway corridor
- Alternative parking will be identified and communicated, and we suggest using alternative transportation.
- We will engage with schools, businesses, offices and the medical district about alternative transportation and local parking options.

# Business Relations

The Project will maximize predictability and manage disruption as much as possible.

- Provide **timely** information about construction, traffic and parking
- Where possible, **mitigate** construction impacts and **manage** issues as they arise
- Work with businesses to **maintain visibility** and help customers **access** shops and services
- **Dedicated** Segment Manager who will be your **day-to-day contact**

# Connect with us

- [broadwaysubway.ca](https://broadwaysubway.ca)
- [broadwaysubway@gov.bc.ca](mailto:broadwaysubway@gov.bc.ca)
- **24/7 Construction Line:**  
1-844-815-6114
- **Community Office:**  
1212 West Broadway; 778-572-3544



# Discussion

