



Broadway Subway Project

South Granville Station Information Session

April 28, 2021



Purpose

- Share information about the method of construction and timing of the Broadway Subway Project around the future South Granville Station.
 - Safety for residents, businesses and visitors
 - Traffic, access, parking and construction information
 - Mitigation from site activities

Presentation Overview

1. Broadway at a Glance
2. Project Team and Partners
3. Our Commitments
4. Project Overview
5. Construction Sequence
6. Being a good neighbour
7. Questions and Comments

Broadway at a Glance

- More than 125,000 people living in the corridor
- Second largest employment centre in the province, with more than 105,000 jobs along the Broadway corridor
- 110,000 transit trips each day
- One of the busiest routes for goods movement in City of Vancouver
- Largest hospital (VGH) in Western Canada
- High-tech clusters drawing commuters for work and to centres for research, innovation and education

Project Team and Partners



transportation
investment
corporation





Our Commitments



Our Commitments to You

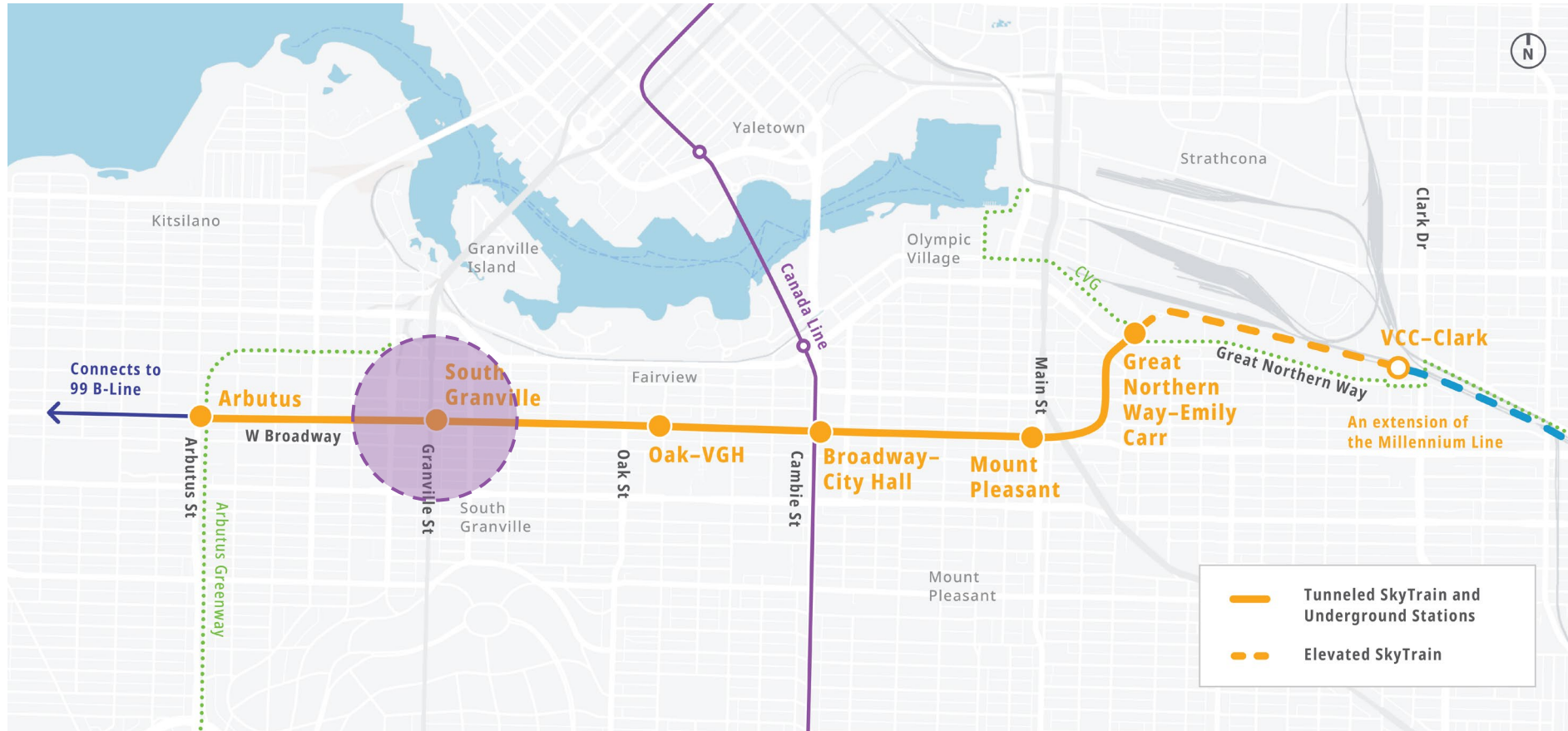
- Safety: For public and for workers
- Mobility: Buses, vehicles, pedestrians, cyclists, emergency vehicles
- Access: Businesses, residences, services
- Communicate transparently, clearly and consistently
- Provide regular updates and advanced notice of construction activities
- Mitigate construction impacts wherever possible
- Minimize transmission of dirt, dust, light, noise and vibration



Project Overview



Alignment Overview: 6 New Stations



Family of Stations



Great Northern Way - Emily Carr



Mount Pleasant



Broadway - City Hall



Oak - VGH

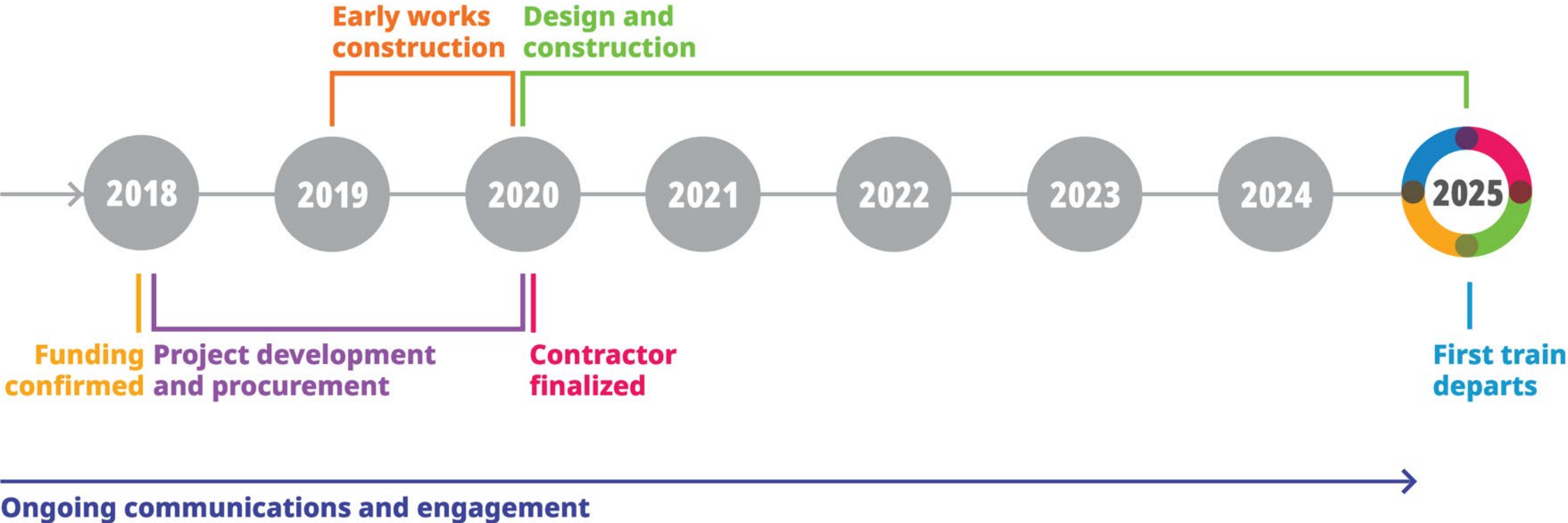


South Granville



Arbutus

Project Overall Schedule



South Granville Station



Artist's renderings of preliminary conceptual station design. Final streetscape and development will be subject to the City of Vancouver's Broadway Plan

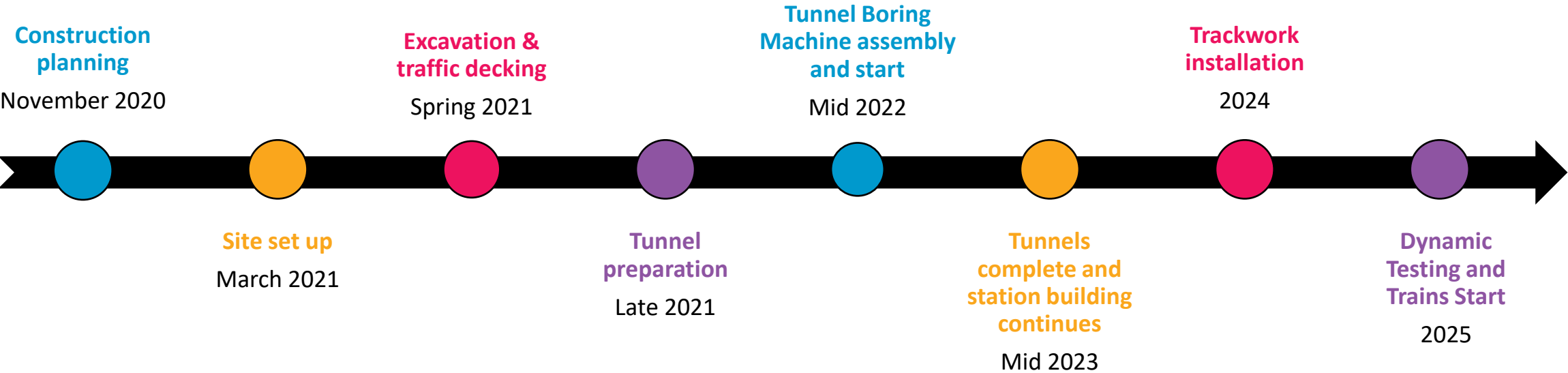
- Located on the northeast corner of Broadway and Granville Street near South Granville, Burrard Slopes and Granville Island neighbourhoods
- The station entrance will be integrated with a development that will happen concurrent with station construction



Construction Sequence



Construction Sequence







Innovative Engineering

Implement a solution to manage traffic and construction in one of the busiest corridors in North America during construction

- Maintain traffic access throughout construction
- Minimize disruption to businesses, residents and visitors
- Continue access to public transit
- Maintain pedestrian access to residences, businesses and services

**Geotechnical Investigation and
Building Demolition**
Spring 2021

Legend:

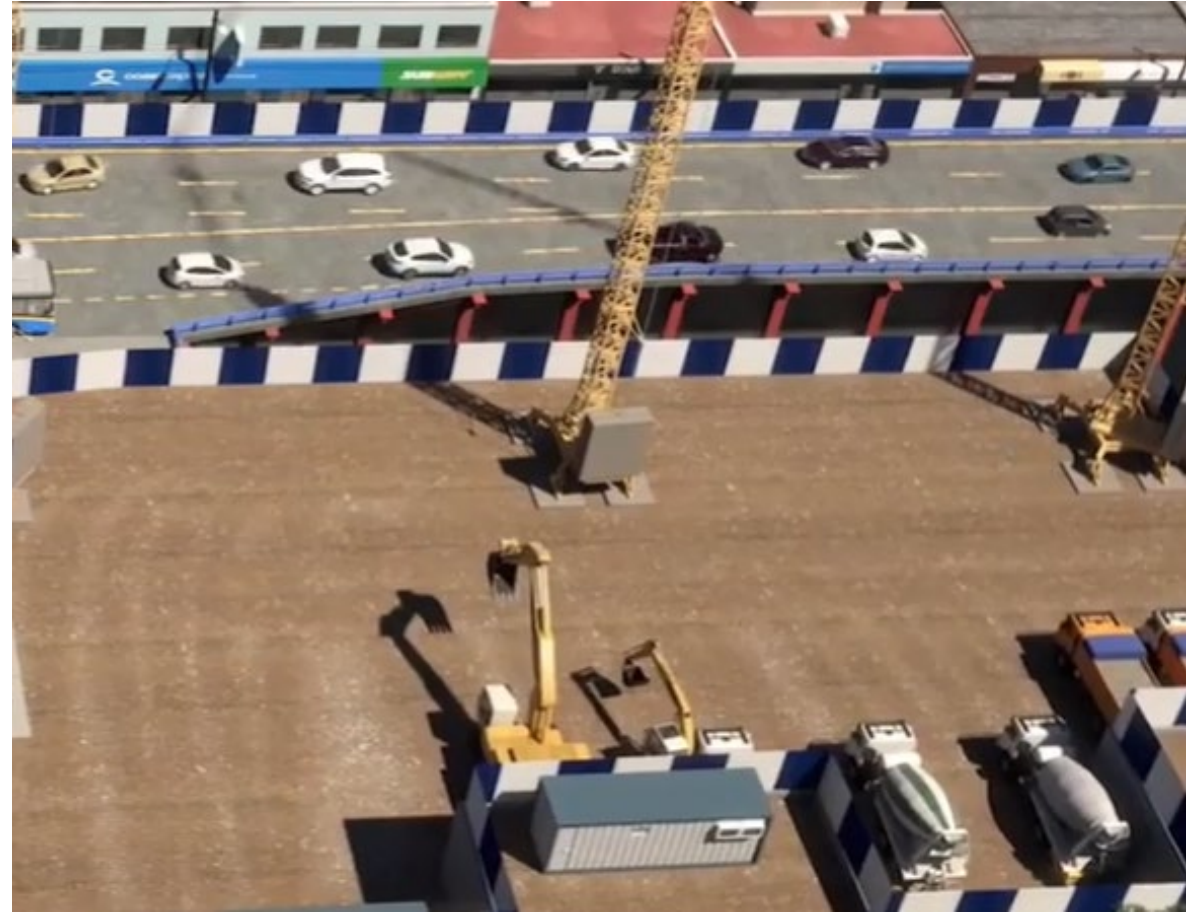
-  Bore holes
-  Future Station Entrance
-  Demolition Zone
-  Underground Project Area



- Geotechnical investigations collect information about the ground conditions that help inform our construction plans
- To prepare the site of the future station, building demolition begins in May

Maintaining Traffic Flow along Broadway

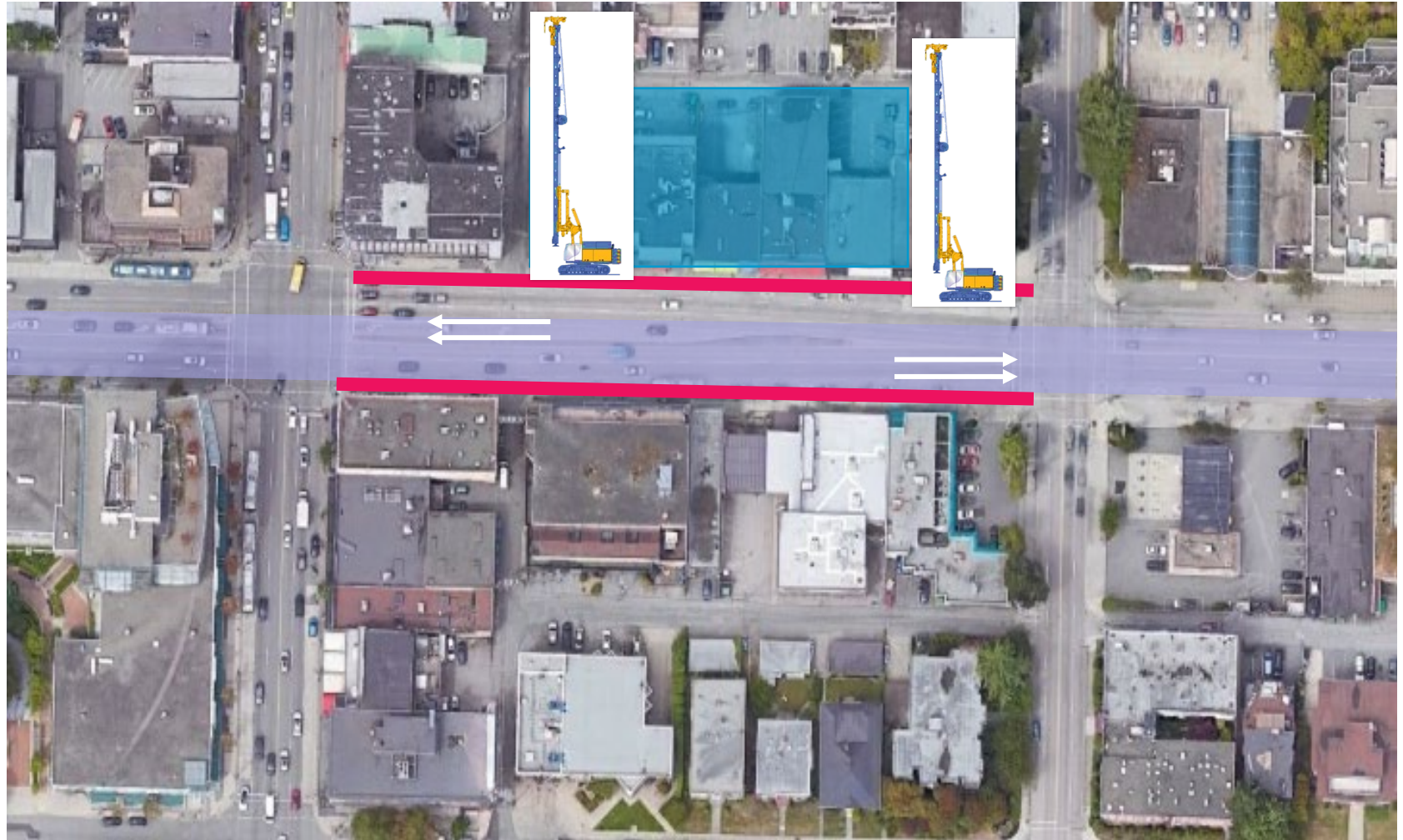
- 4 lanes of traffic will be maintained during construction
- Traffic signals modifications will be required at intersections to accommodate lane re-alignment
- Short-term lane closures for utility relocations



Drilling and Inserting Columns Summer 2021

Legend:

- Traffic Deck Support System
- Work Site
- Open traffic flow







- Stage 1: Lanes closed to traffic on the south side of Broadway during drilling works on the south side
- Stage 2: Lanes closed to traffic on the north side of Broadway during drilling works on the north side

Excavation and Traffic Deck Installation

Summer - Winter 2021

Legend:

-  Traffic deck support system
-  Work Site
-  Open traffic flow
-  Temporary traffic deck being built







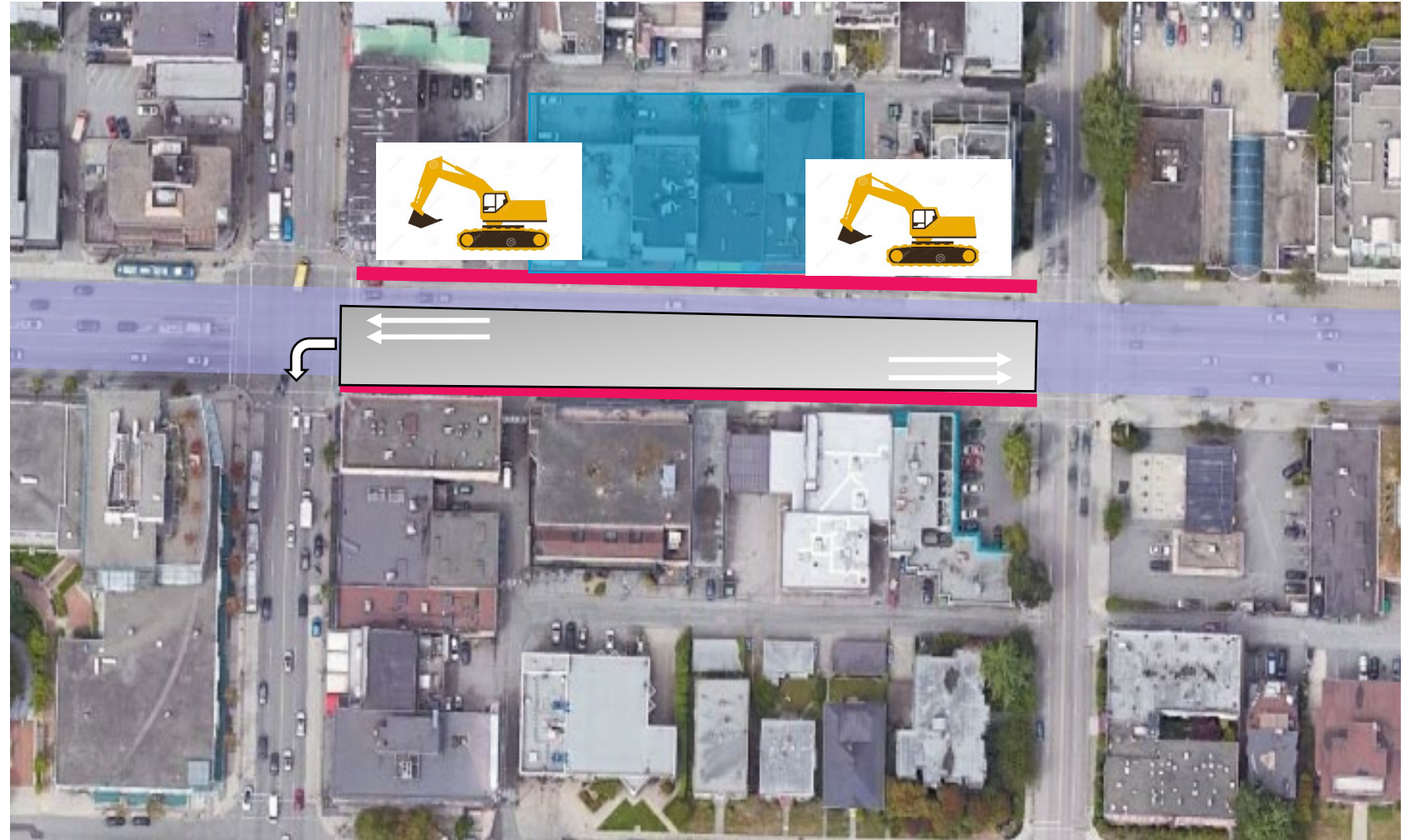
- Stage 3: South side lanes closed to traffic during excavation and as the traffic deck is being built on the south side

Excavation and Traffic Deck Completion

Winter 2021 – Fall 2022

Legend:

-  Traffic deck support system
-  Work Site
-  Open traffic flow
-  Temporary traffic deck open



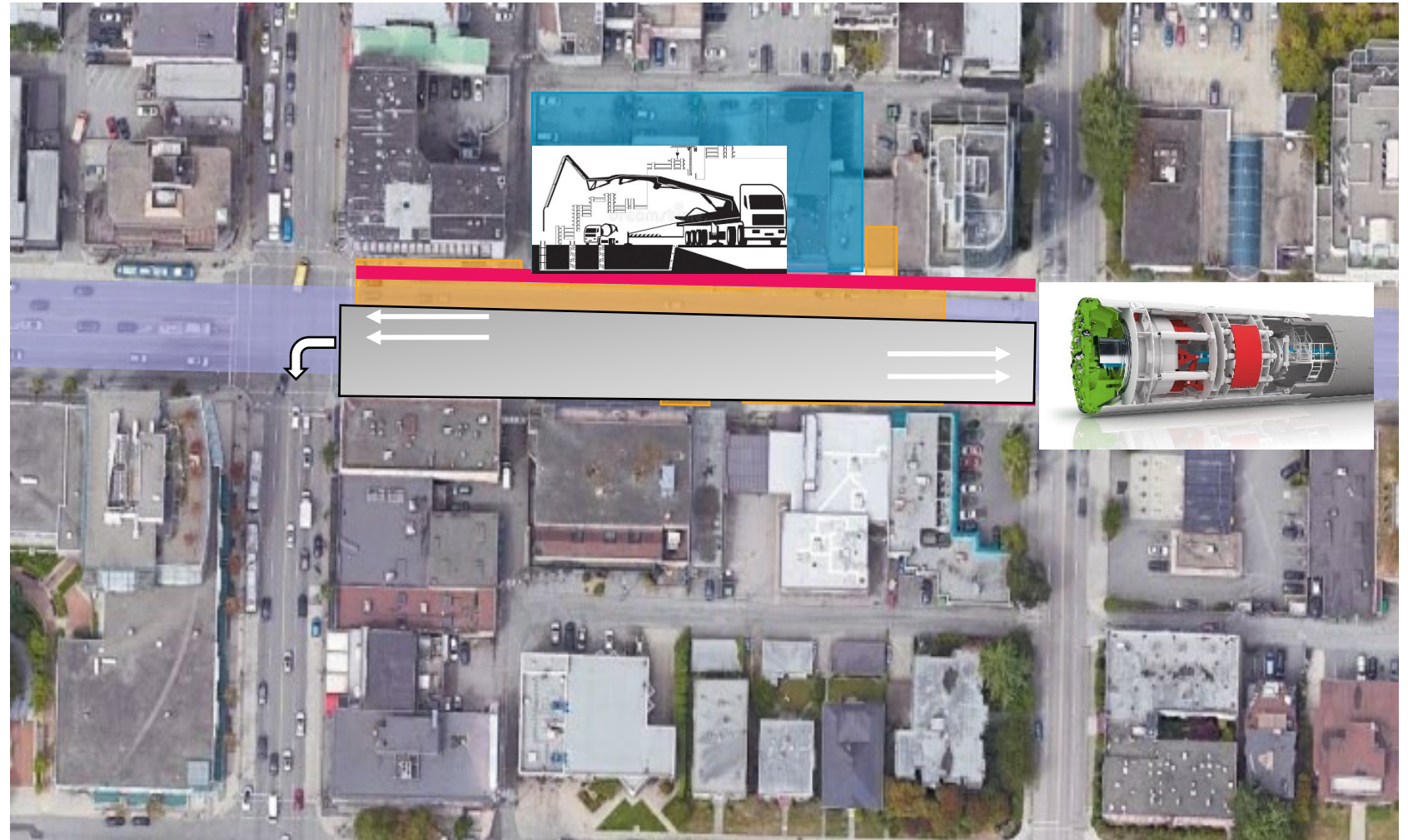
- Stage 4 and 5: Four lanes of traffic are open, two in each direction
- Underground excavation continues

Preparing for the TBMs

Fall 2022

Legend:

- Work Site
- Underground Project Area
- Traffic Deck Support System
- Open traffic flow
- Temporary traffic deck open

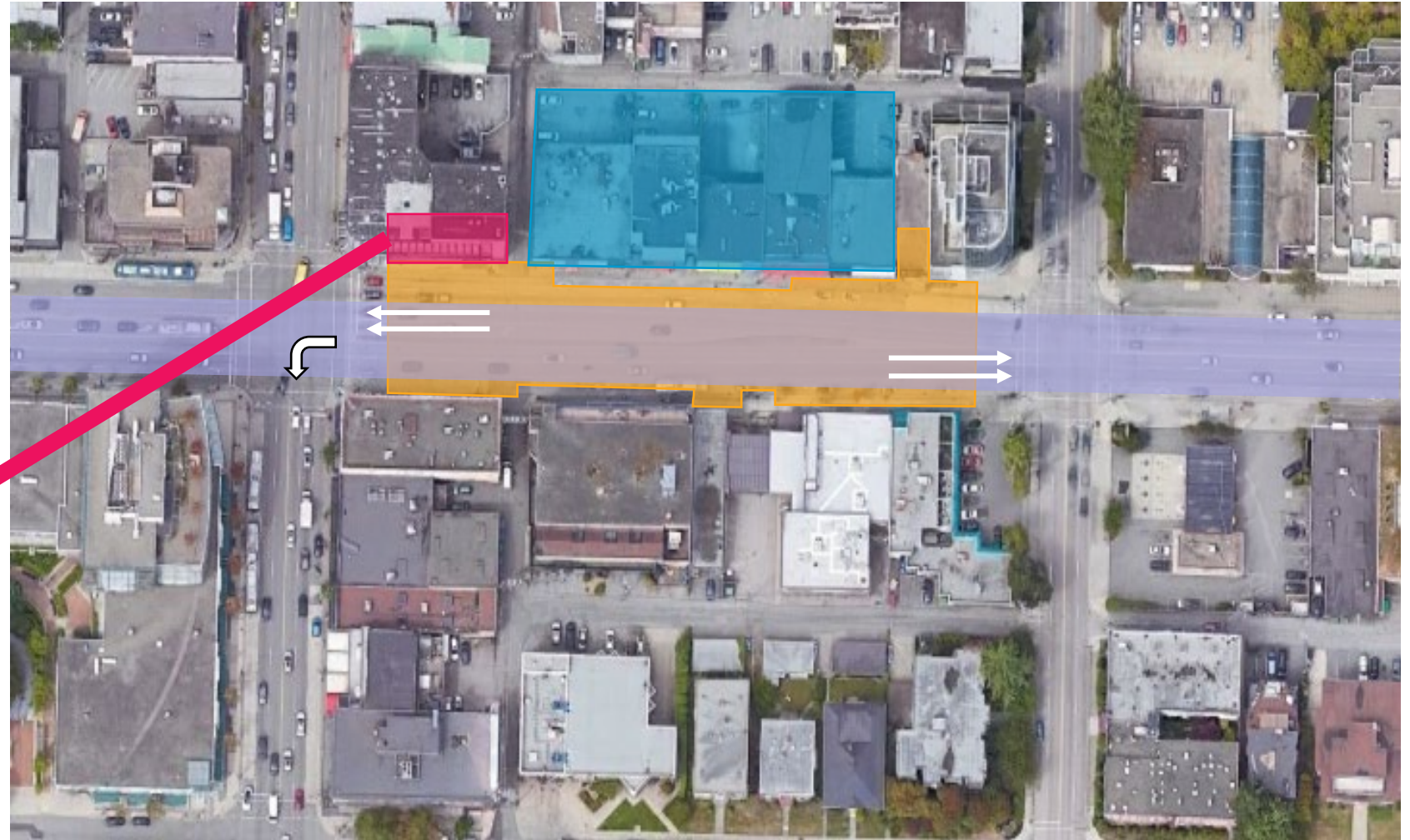


- Pour concrete to prepare the tunnel for the tunnel boring machine 18 meters below street level
- TBMs arrive and traverse through station
- Traffic flows smoothly above this work on the traffic deck

Construct Below Ground Station 2023 - 2024

Legend:

- Work Site
- Future Station Entrance
- Open Traffic Flow
- Underground Project Work Area



- Construction of below ground and above ground Station works

Restoration of the Surface 2024-25

Legend:

- Completed Station Entrance
- Open traffic flow



- Backfill the underground station
- Removal of the Traffic deck
- Repaving of road surface
- Detours removed and traffic returns to the new normal

Train Track Construction 2024



- Track construction works begin

Train Testing 2025



- Dynamic train testing along the tracks
- Trains operational



Traffic



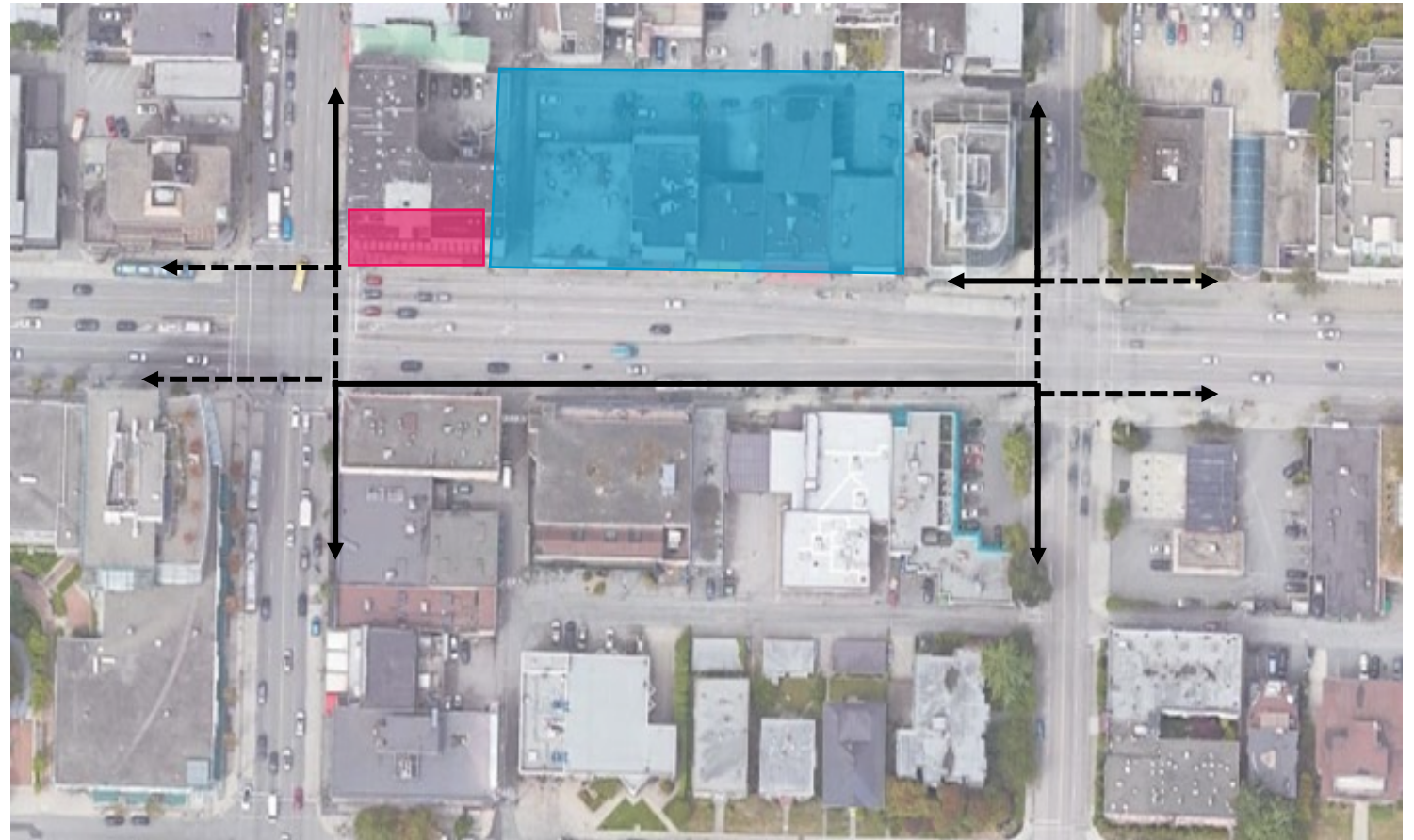
What to expect

We are committed to mitigating impacts throughout construction

- 4 lanes of traffic will be maintained on Broadway during construction
- Short-term lane closures for utility relocation works
- Traffic signals modifications will be required at Granville St. and Hemlock St. intersections on Broadway to accommodate lane re-alignment
- Bus access will be maintained
- Construction trucks will access the South Granville site via existing truck routes along Granville St. and Broadway

What to expect: Pedestrians

- South sidewalk and cross-walks on Broadway will be maintained for pedestrian access
- Pedestrians will be detoured around the site with signage
- Flaggers will be available to direct pedestrians as required
- Business Wayfinding signs to inform pedestrians



Legend

- Pedestrian path
- - - - - Pedestrian crosswalk



Mitigation Measures



Vibration Management

Project will adhere to guidelines related to vibration from construction activities

Activities that may result in some vibration include:

- Demolition of structures and pavement
- Shoring works for future station and tunnel
- Tunnel Boring
- Building the traffic deck

Noise Management

- Project will adhere to City of Vancouver noise bylaw levels
- Construction activities that generate the most noise will be carried out during core hours:
 - 07:00 a.m. to 8:00 p.m. Monday-Saturday
 - 09:00 a.m. to 8:00 p.m. Sunday/Statutory Holidays
- In 2021, we expect minimal noise during the night in this area

Dust Control

- Water spray to reduce generation of fugitive dust during dry seasons
- Sweep and clean paved surfaces to eliminate tracking of sand and dirt

Light Management

- Task-specific lighting will be used, large area lighting will be minimized
- Physical barriers (temporary sound walls and site hoardings) will limit light spills
- Existing street lighting conditions will be maintained for traffic



Being a good neighbour



Ongoing Communications

The Project will maximize predictability and manage disruption as much as possible

- Timely information about construction, traffic and parking
- Notifications by email, newsletter, website and direct contact
- Clear signage at point of construction activities
- Where possible, mitigate construction impacts and manage issues as they arise
- Maintain business visibility and help customers access shops and services

Business Advisory Signage

- Comprehensive, temporary wayfinding signage program
- Ensures access and visibility during construction



Parking Map



Connect with us



24/7 Construction Line: 1-844-815-6114



broadwaysubway@gov.bc.ca



broadwaysubway.ca



Community Office: 1212 West Broadway
778-572-3544



**Dedicated Segment Manager and
Business/Community Relations Managers**
for day-to-day contact

Questions and Comments

