

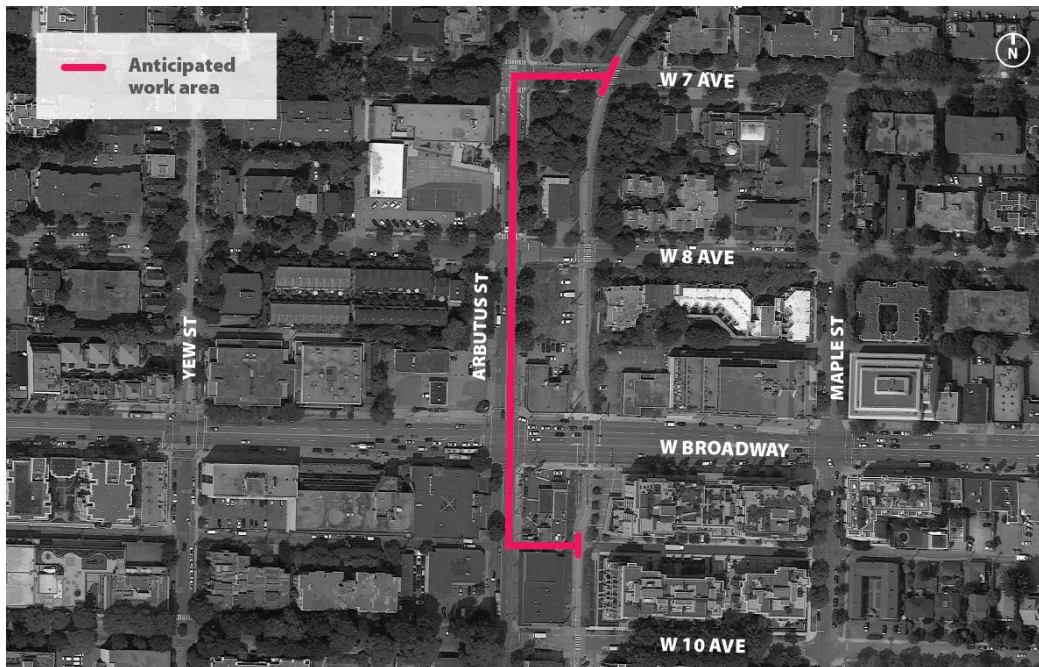


April 21, 2020

## Broadway Subway Project Early Works BC Hydro Relocation – Arbutus Street

Early work is currently underway to prepare for construction of the Broadway Subway Project, which is anticipated to begin this fall.

**Beginning the week of May 11, 2020 through July 2020, BC Hydro will be undertaking work on Arbutus Street between W. 10<sup>th</sup> Avenue and W. 7<sup>th</sup> Avenue, to relocate BC Hydro infrastructure from above the Arbutus Greenway to underground along Arbutus Street.**



Work will be undertaken in stages. Please note the timing of work and associated impacts at each location is subject to change, and updates will be posted to [engage.gov.bc.ca/broadwaysubway/whats-happening-now/](https://engage.gov.bc.ca/broadwaysubway/whats-happening-now/):

- Arbutus Street between W. 10<sup>th</sup> Avenue and W. 8<sup>th</sup> Avenue – temporary lane closures, maintaining two-way traffic
- Arbutus Street (northbound/southbound) between W. 8<sup>th</sup> Avenue and W. 7<sup>th</sup> Avenue – temporary road closure anticipated for approximately one week
- W. Broadway at Arbutus – temporary lane closures, maintaining two-way traffic
- W. 8<sup>th</sup> Avenue (eastbound/westbound) at Arbutus Street – temporary road closure anticipated for approximately two weeks
- Arbutus Greenway – temporary diversions may be in place to maintain safety around work areas shown. A temporary closure and detour may be required for one to two days while overhead work is conducted.

**Community Office**  
1212 West Broadway  
Vancouver, BC

*Open Mondays, Wednesdays and Thursdays from 9am to 5pm  
(Please note the Community Office is temporarily closed)*

Website: [engage.gov.bc.ca/broadwaysubway](https://engage.gov.bc.ca/broadwaysubway)

Email: [broadwaysubway@gov.bc.ca](mailto:broadwaysubway@gov.bc.ca)

Phone: 778-572-3544

24/7 Construction Line: 1-844-815-6114



Street, sidewalk and Arbutus Greenway users are asked to follow the direction of on-site signage and traffic control personnel.

Work is being undertaken by a contractor to BC Hydro under conditions outlined by a Traffic Management Plan approved by the City of Vancouver.

The Broadway Subway Project is committed to keeping you informed in advance of any local work now and in the future so you can plan accordingly. Please note, construction schedules can change on short notice, and updates will be posted to [engage.gov.bc.ca/broadwaysubway/whats-happening-now/](https://engage.gov.bc.ca/broadwaysubway/whats-happening-now/).

**To receive ongoing updates about Arbutus Early Works, please contact the Broadway Subway Project to provide your contact details by email ([Broadwaysubway@gov.bc.ca](mailto:Broadwaysubway@gov.bc.ca)) or by phone (778 572-3544), so we can provide you with relevant updates.**

Should you have questions about this work, please email [broadwaysubway@gov.bc.ca](mailto:broadwaysubway@gov.bc.ca) or call the 24/7 Construction Line at 1-844-815-6114.

#### **About the Broadway Subway Project**

The Broadway Subway Project is a 5.7 km extension of the Millennium Line, from VCC-Clark Station to Broadway and Arbutus, and is being funded and delivered by the Province of B.C. with contributions from the Government of Canada and the City of Vancouver. It includes six new underground stations, and will provide fast, frequent and convenient SkyTrain service to B.C.'s second-largest jobs centre, world-class health services, an emerging innovation and research hub, and growing residential neighbourhoods. For more information about the Project and early works in your area, visit [engage.gov.bc.ca/broadwaysubway](https://engage.gov.bc.ca/broadwaysubway).

**Community Office**  
1212 West Broadway  
Vancouver, BC

*Open Mondays, Wednesdays and Thursdays from 9am to 5pm  
(Please note the Community Office is temporarily closed)*

Website: [engage.gov.bc.ca/broadwaysubway](https://engage.gov.bc.ca/broadwaysubway)

Email: [broadwaysubway@gov.bc.ca](mailto:broadwaysubway@gov.bc.ca)

Phone: 778-572-3544

24/7 Construction Line: 1-844-815-6114