



Broadway Subway Project

Arbutus Station Information Session

April 29, 2021



Purpose

- Share information about the method of construction and timing of the Broadway Subway Project near the future Arbutus Station
 - Safety for residents, businesses and visitors
 - Traffic, access, parking and construction information
 - Construction mitigation

Presentation Overview

1. Broadway at a Glance
2. Project Team and Partners
3. Our Commitments
4. Project Overview
5. Construction Sequence
6. Being a good neighbour
7. Questions and Comments

Broadway at a Glance

- More than 125,000 people living in the corridor
- Second largest employment centre in the province, with more than 105,000 jobs along the Broadway corridor
- 110,000 transit trips each day
- One of the busiest routes for goods movement in City of Vancouver
- Largest hospital (VGH) in Western Canada
- High-tech clusters drawing commuters for work and to centres for research, innovation and education

Project Team and Partners



transportation
investment
corporation





Our Commitments



Our Commitments to You

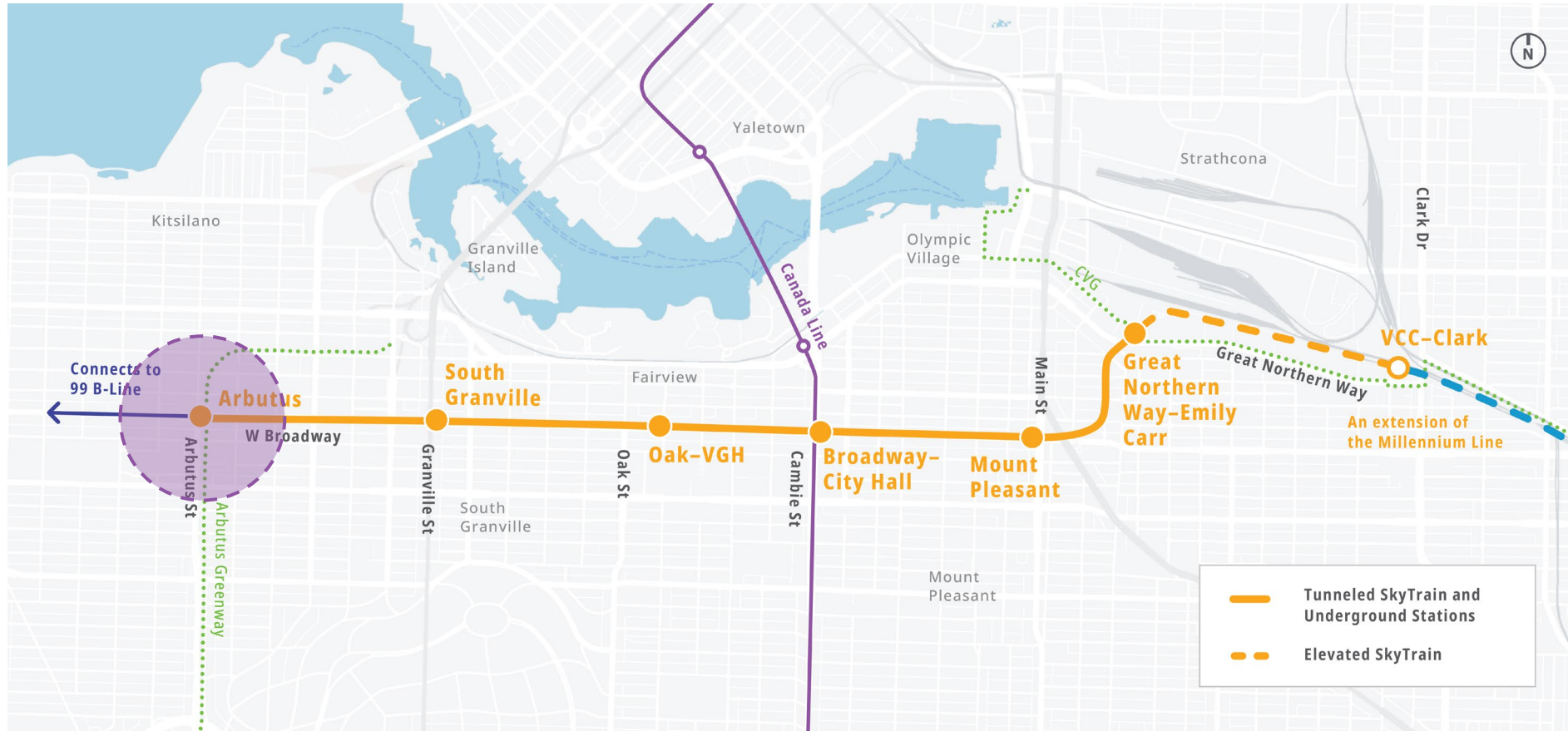
- Safety: For public and for workers
- Mobility: Buses, vehicles, pedestrians, cyclists, emergency vehicles
- Access: Businesses, schools, residences, services
- Communicate transparently, clearly and consistently
- Provide regular updates and advanced notice of construction activities
- Mitigate construction impacts wherever possible
- Minimize transmission of dirt, dust, light, noise and vibration



Project Overview



Alignment Overview: 6 New Stations



Family of Stations



Great Northern Way - Emily Carr



Mount Pleasant



Broadway - City Hall



Oak - VGH

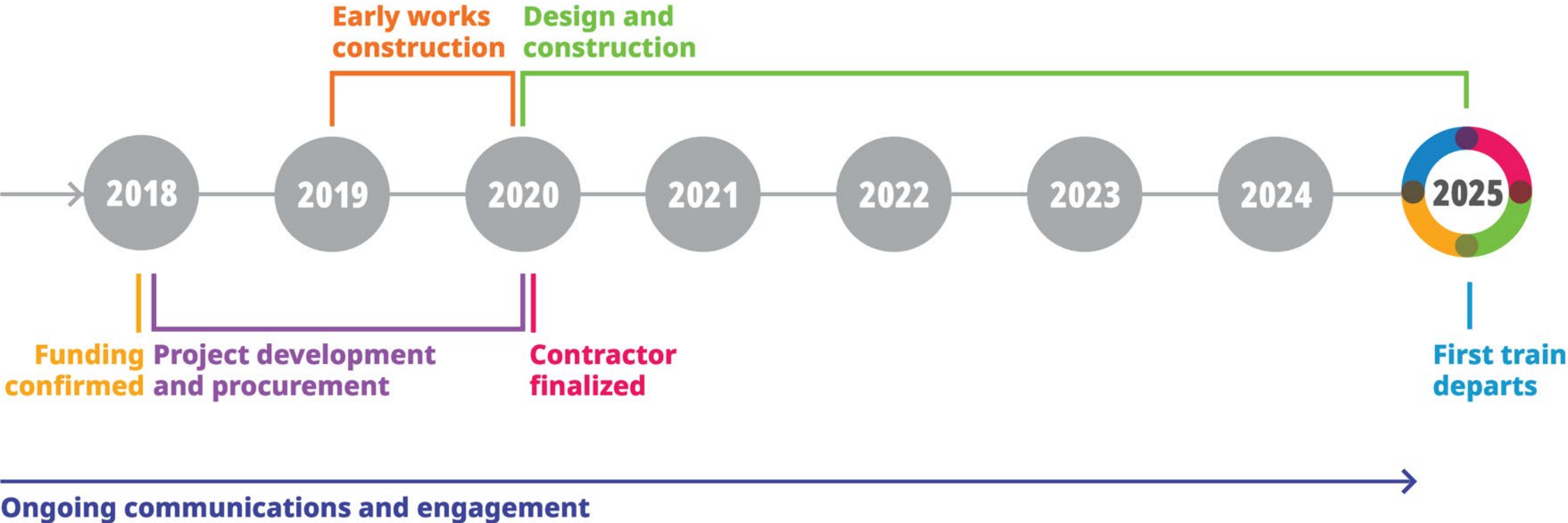


South Granville



Arbutus

Project Overall Schedule



Arbutus Station



Artist's renderings of preliminary conceptual station design. Final streetscape and development will be subject to the City of Vancouver's Broadway Plan.

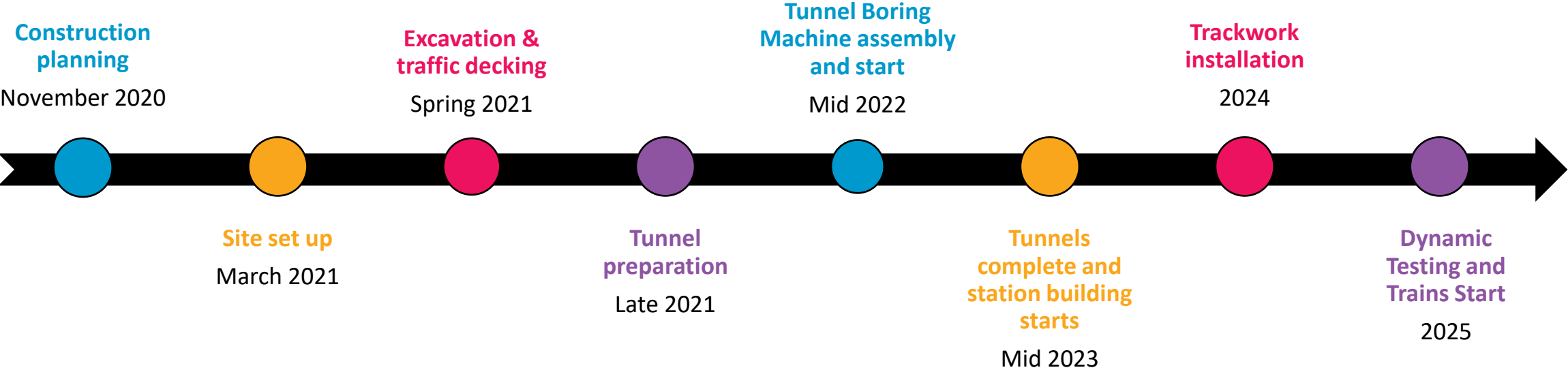
- Located at the northeast corner of Broadway and Arbutus Street and adjacent to the Arbutus Greenway
- Connect passengers with B-Line bus service between Arbutus and UBC as well as serve the people, schools, businesses, services and jobs in the area



Construction Sequence



Construction Sequence



Innovative Engineering

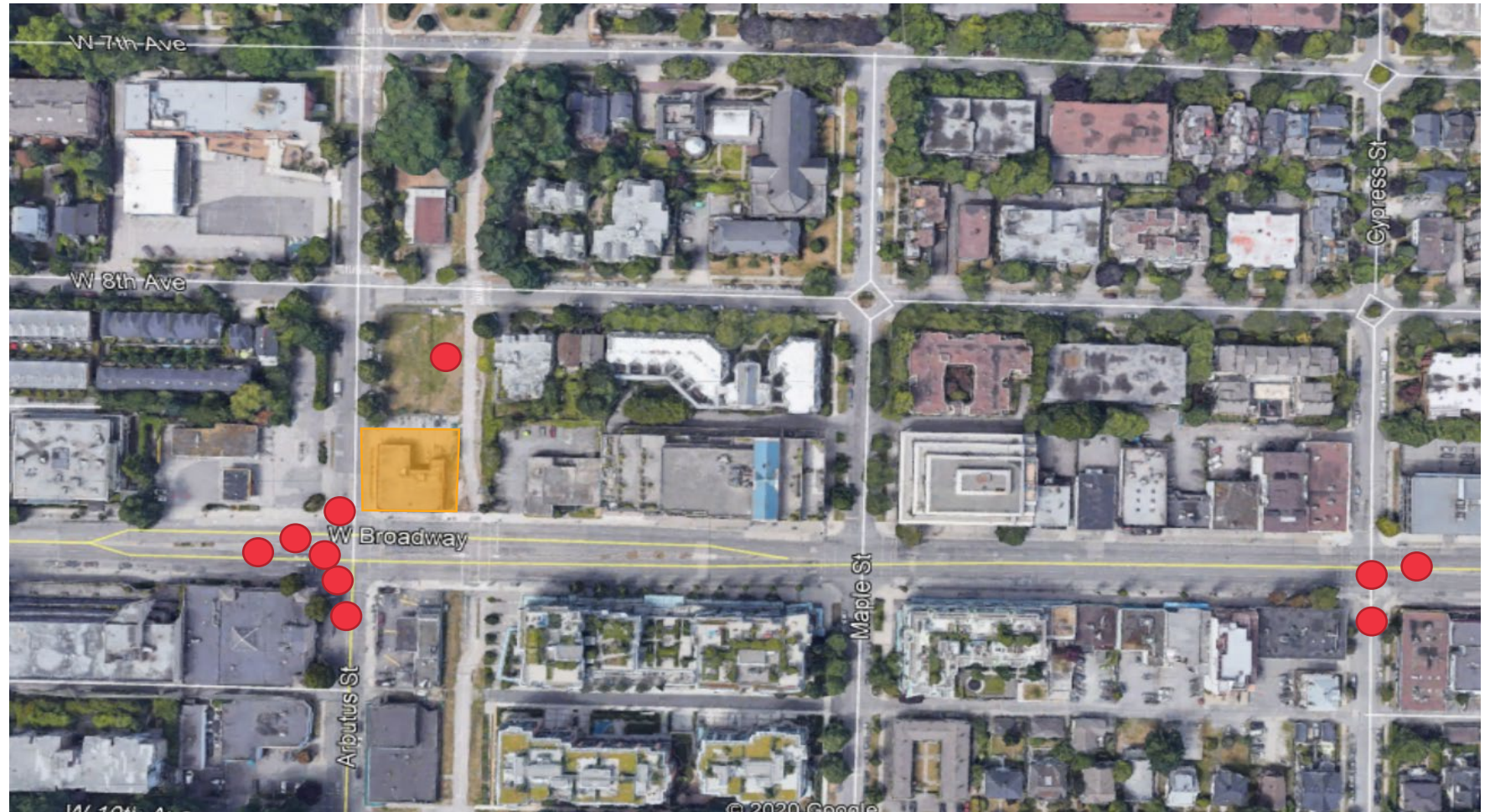
Implement a solution to manage traffic and construction in one of the busiest corridors in North America during construction

- Maintain traffic access throughout construction
- Minimize disruption to businesses, residents and visitors
- Continue access to public transit
- Maintain pedestrian access to residences, businesses and services

Demolition and Geotechnical Investigation

Legend:

- Bore holes
- Demolition Area



- Geotechnical investigations collect information about the ground conditions that help inform our construction plans
- To prepare the site of the future station, buildings were demolished in March

Maintaining Traffic Flow along Broadway

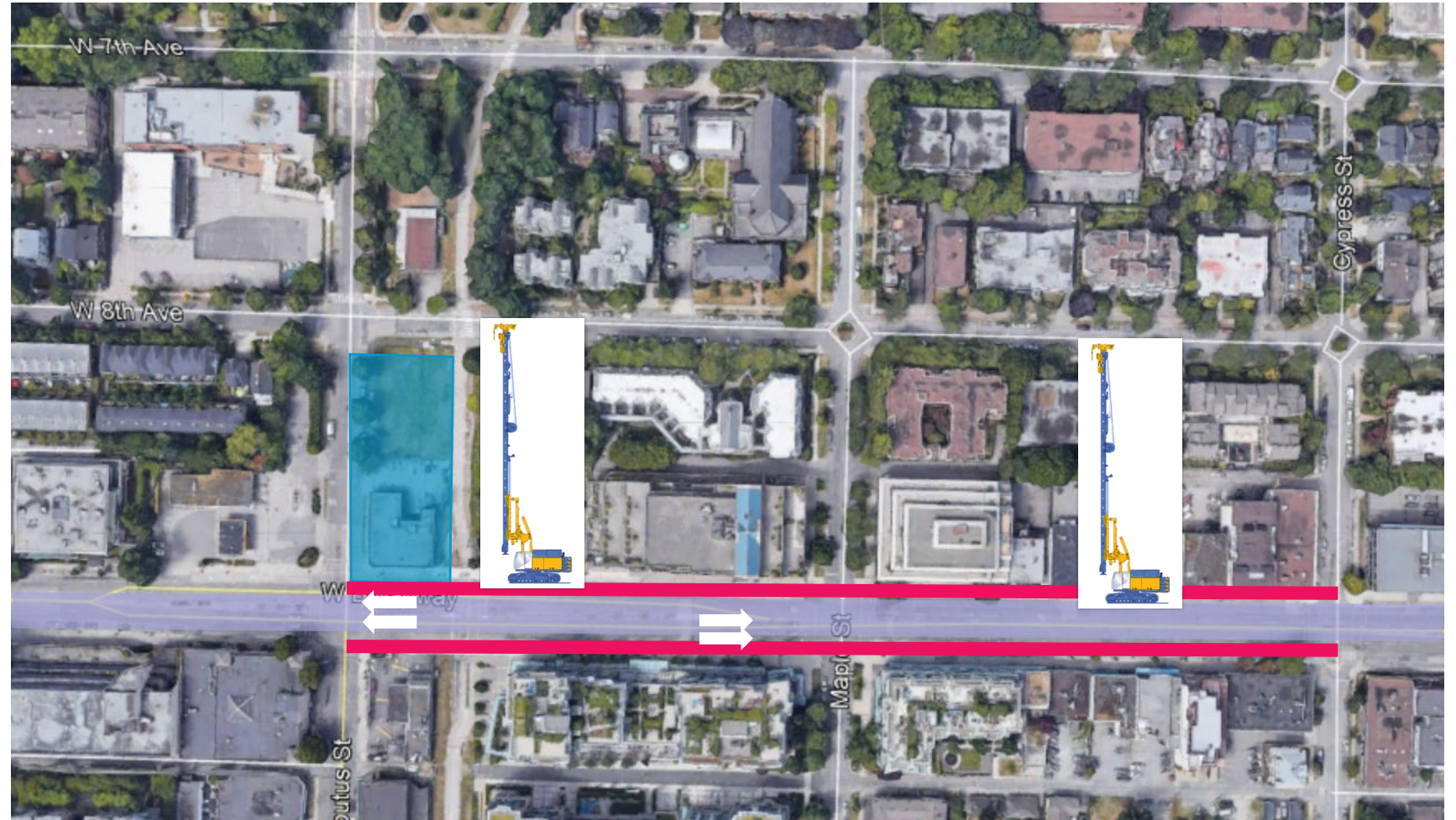
- 4 lanes of traffic will be maintained during construction at all locations
- Short-term lane closures for utility relocations
- Traffic signals modifications will be required at intersections to accommodate lane re-alignment



Drilling and Inserting Columns Spring/Summer 2021

Legend:

- Traffic Deck Support System
- Work Site
- Open traffic flow







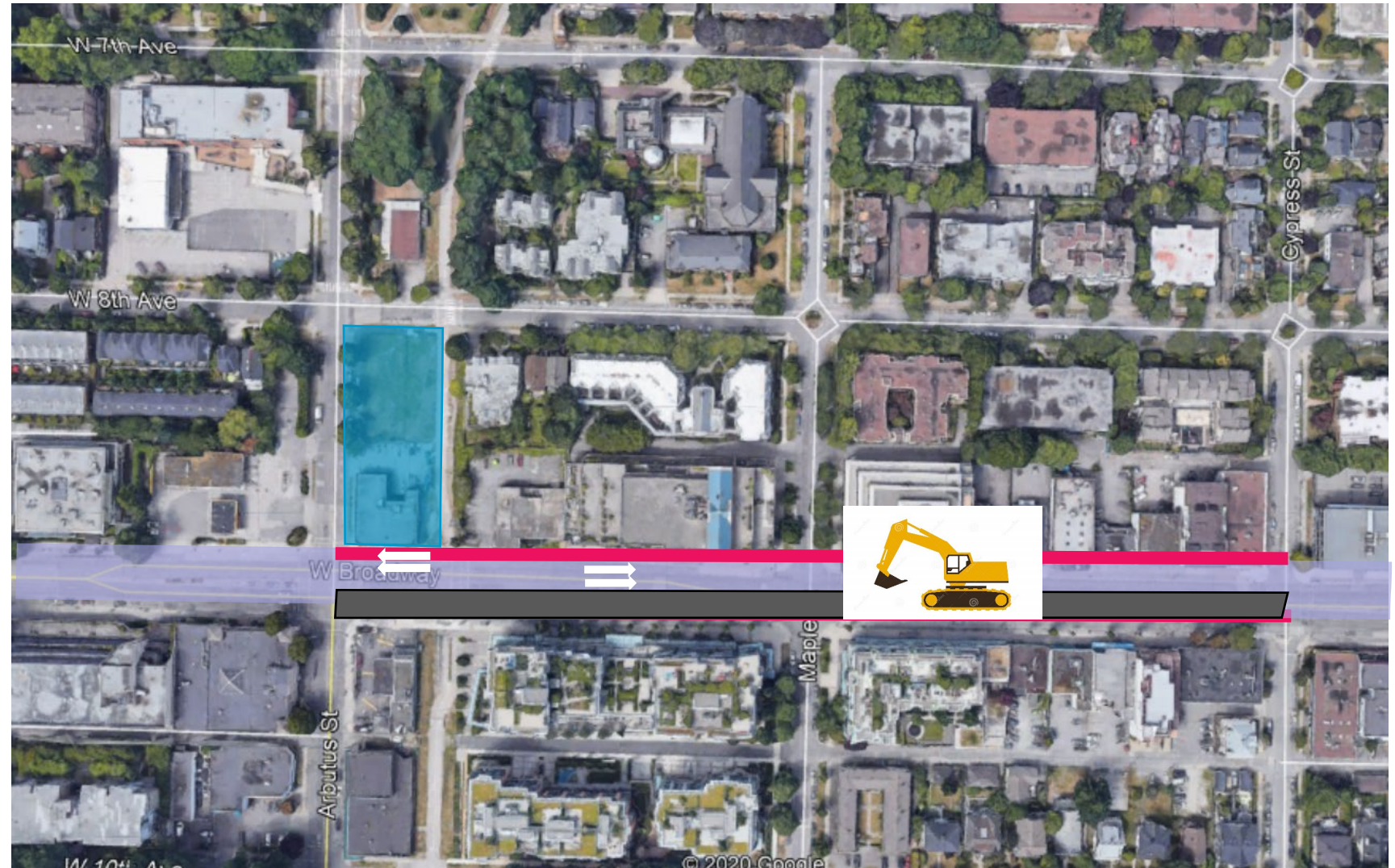
- Stage 1: Lanes closed to traffic on the south side of Broadway during drilling works on the south side
- Stage 2: Lanes closed to traffic on the north side of Broadway during drilling works on the north side

Excavation and Traffic Deck Installation

Summer 2021 – Spring 2022

Legend:

-  Traffic deck support system
-  Work Site
-  Open traffic flow
-  Temporary traffic deck being built







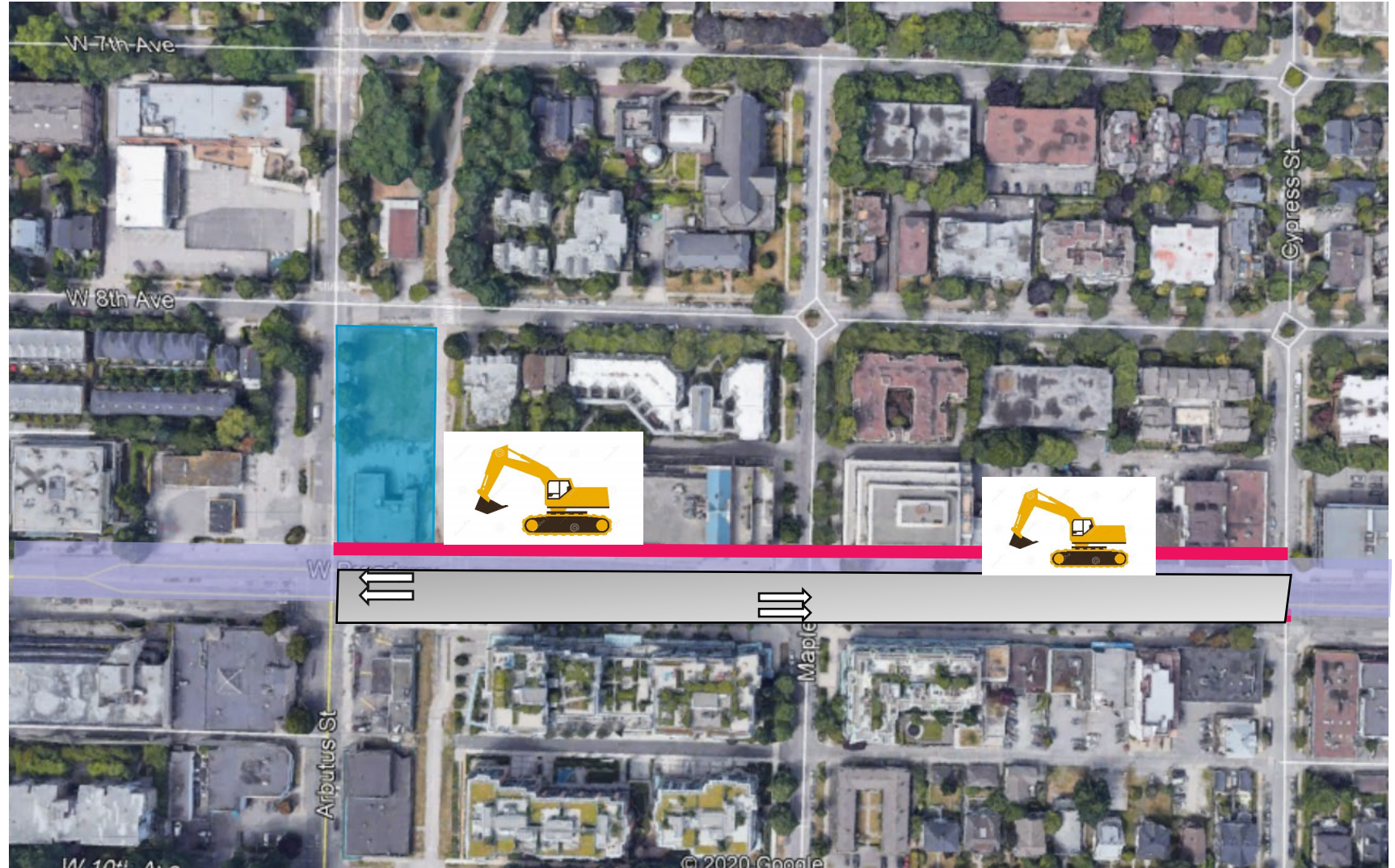
- Stage 3: South side lanes closed to traffic during excavation and as the traffic deck is being built on the south side



Excavation and Traffic Deck Installation 2022

Legend:


-  Traffic deck support system
-  Work Site
-  Open traffic flow
-  Temporary traffic deck open

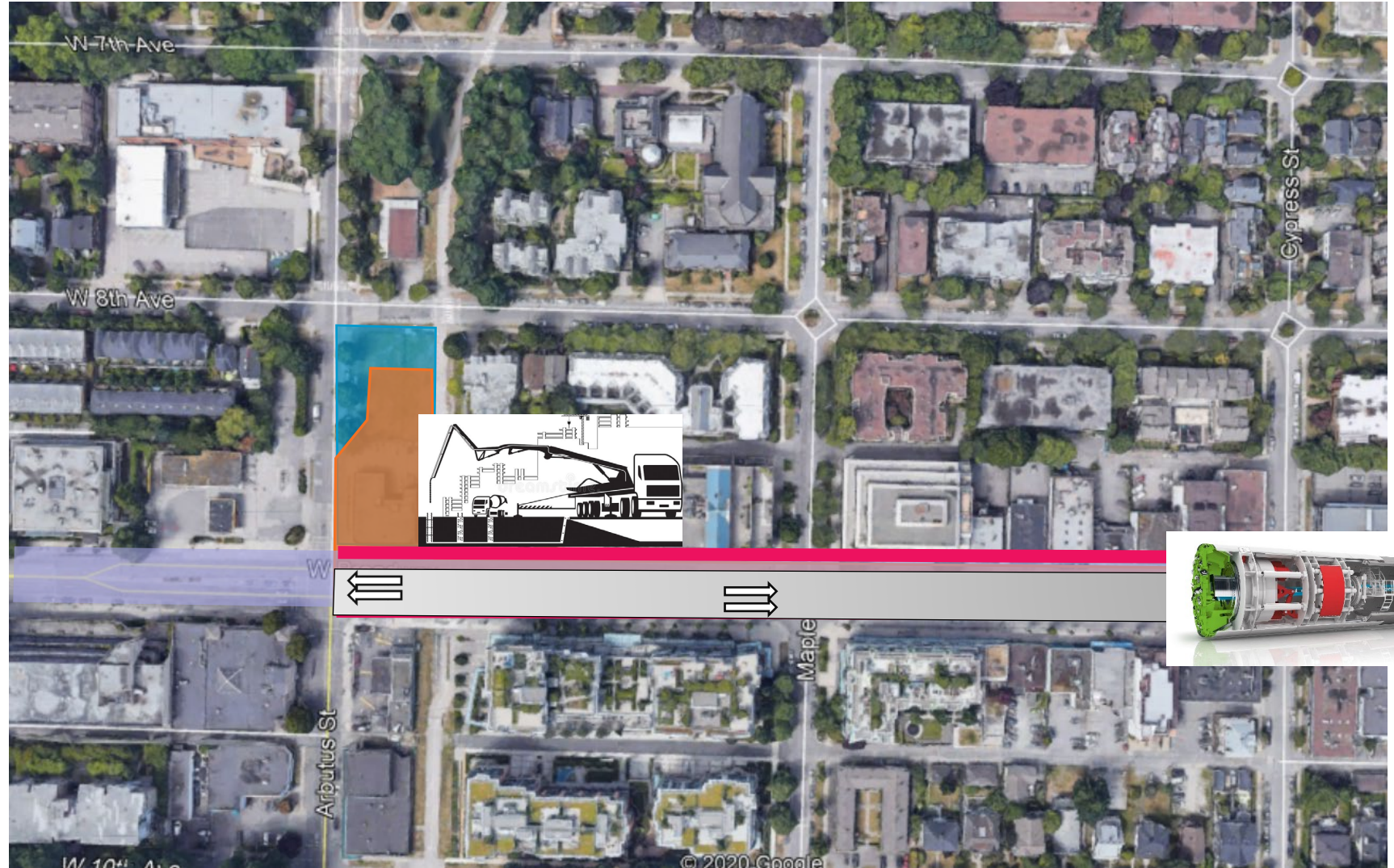


- Stage 4 and 5: Four lanes of traffic are open, two in each direction
- Underground excavation continues

Preparing for the Tunnel Work Spring/Summer 2023

Legend:

- Traffic Deck Support System
- Underground Project Work Area
- Work Site
- Open traffic flow
- Temporary traffic deck open
-  Tunnel boring machine

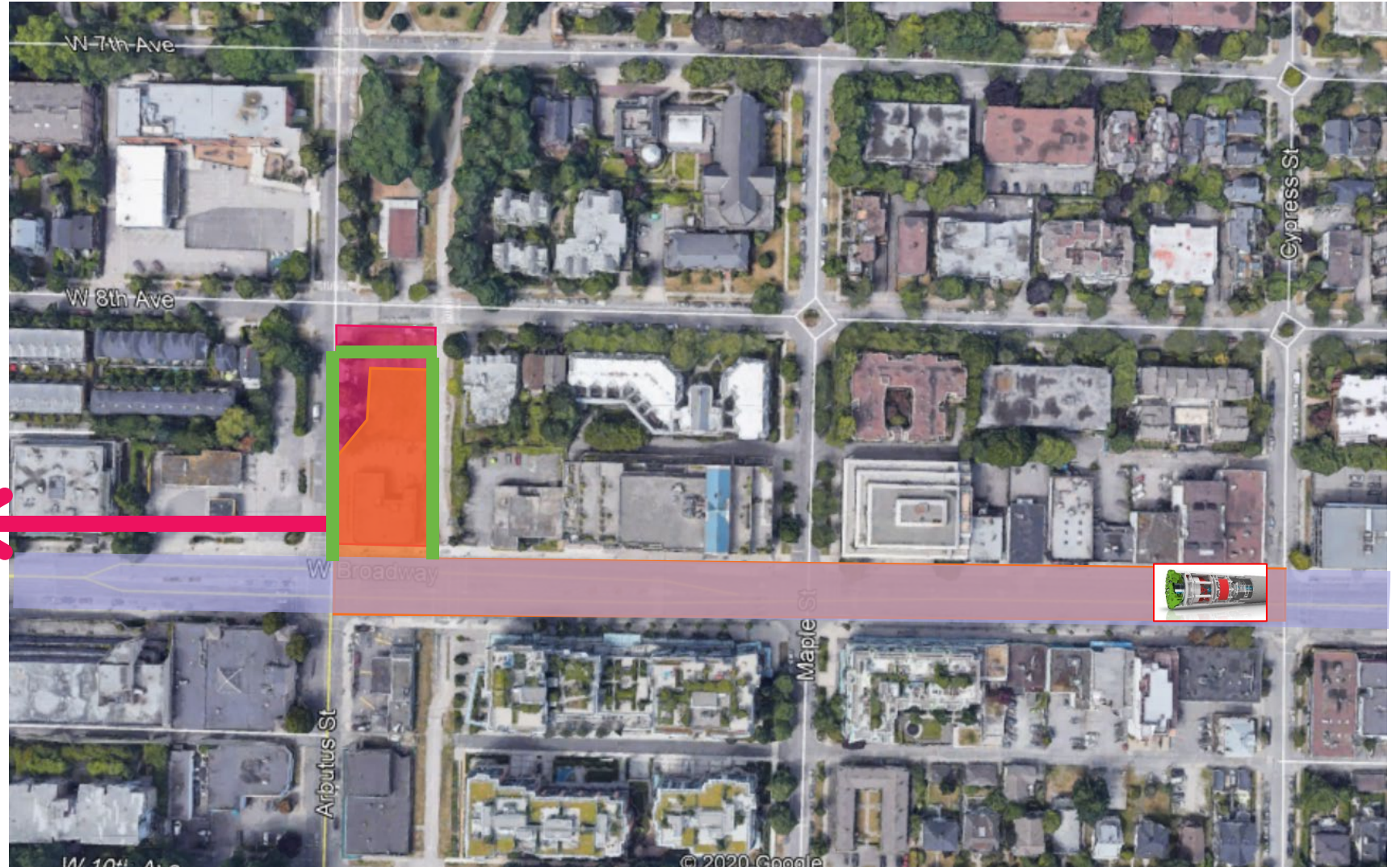


- Pour concrete to prepare the tunnel for the tunnel boring machine 18 meters below street level
- Traffic flows smoothly above this work on the traffic deck

Construct Underground Station, Entrance and Bus Loop 2023 - 2024

Legend:

- Underground Project Work Area
- Future Station
- Bus Loop
- Open traffic flow
- TBM disassembly

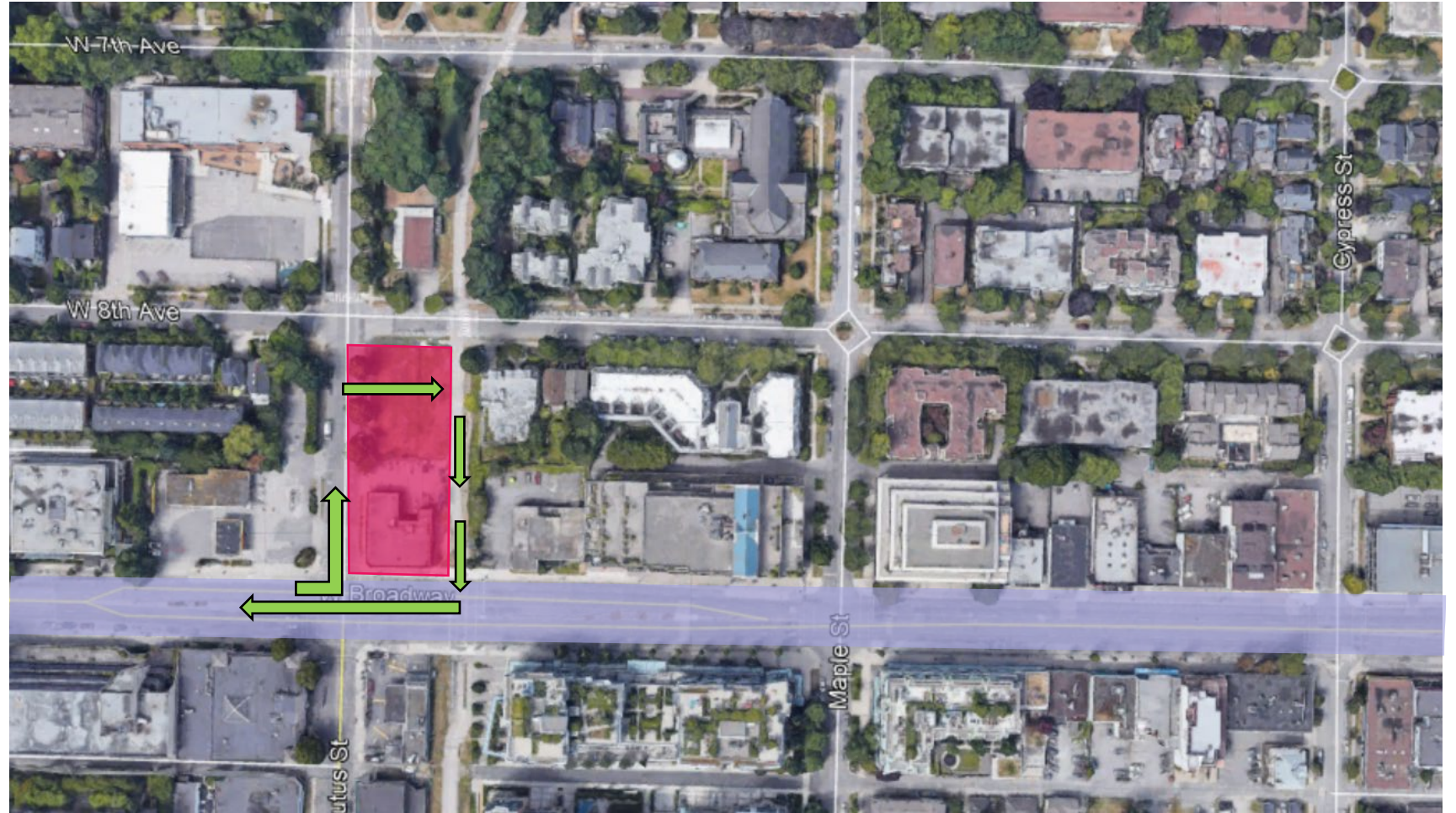


- Construction of the above ground station begins
- Below ground station construction continues
- The Tunnel Boring Machine is disassembled near Cypress Street

Restoration of the Surface 2024

Legend:

- Completed station
- Open traffic flow
- Bus Loop movement



- Backfill the underground station
- Removal of the Traffic deck
- Repaving of road surface
- Detours removed and traffic returns to the new normal

Train Track Construction 2024



- Track construction works begin

Train Testing 2025



- Dynamic train testing along the tracks
- Trains operational



Traffic



What to expect: Commuter Traffic






We are committed to mitigating impacts throughout construction

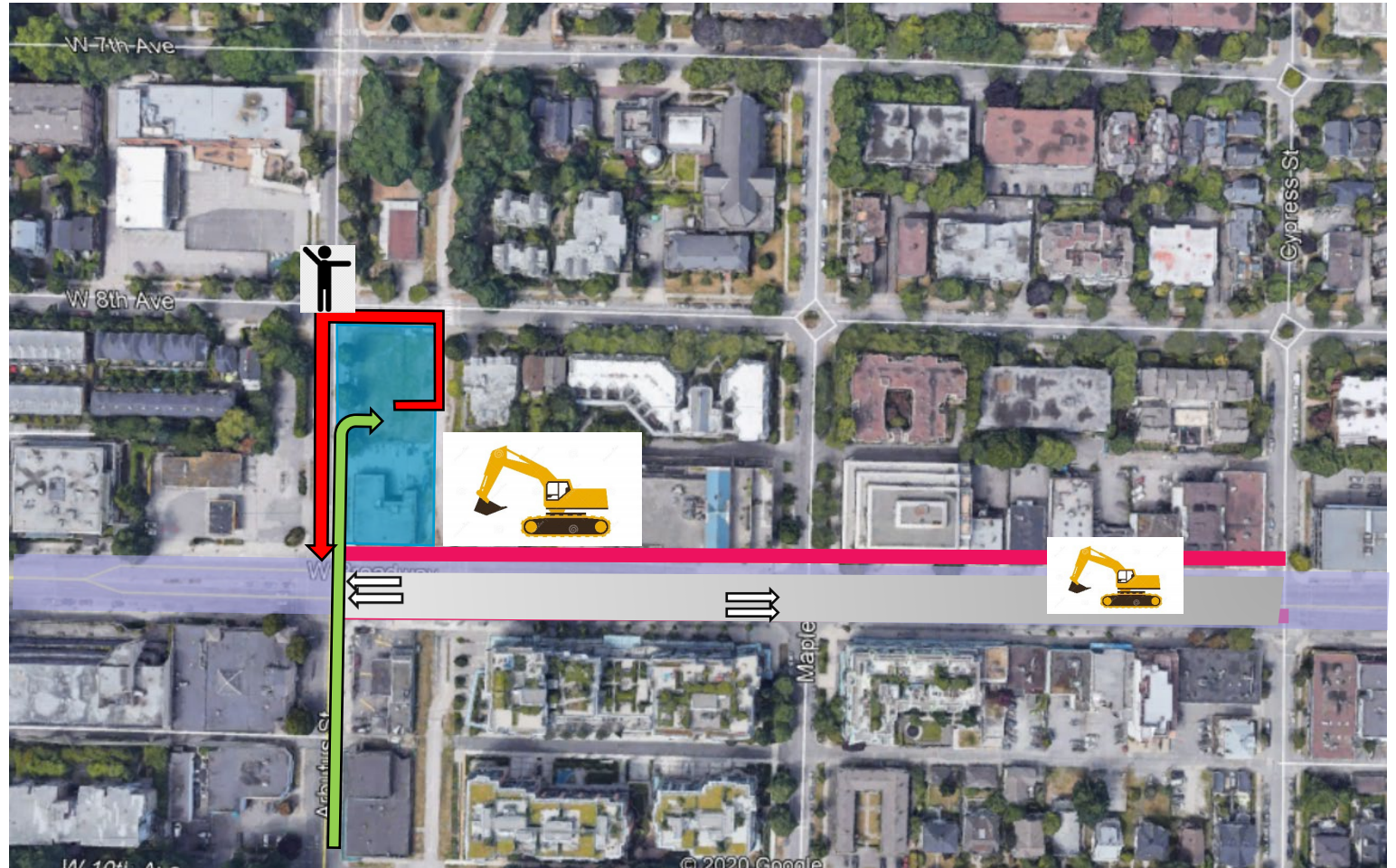
- 4 lanes of traffic will be maintained on Broadway during construction
- Short-term lane closures for utility relocation works
- Traffic signals modifications will be required at intersections to accommodate lane re-alignment
- School pick-up and drop-off locations will be maintained
- Bus access will be maintained

What to expect: Construction Traffic

Truck Route

Legend:

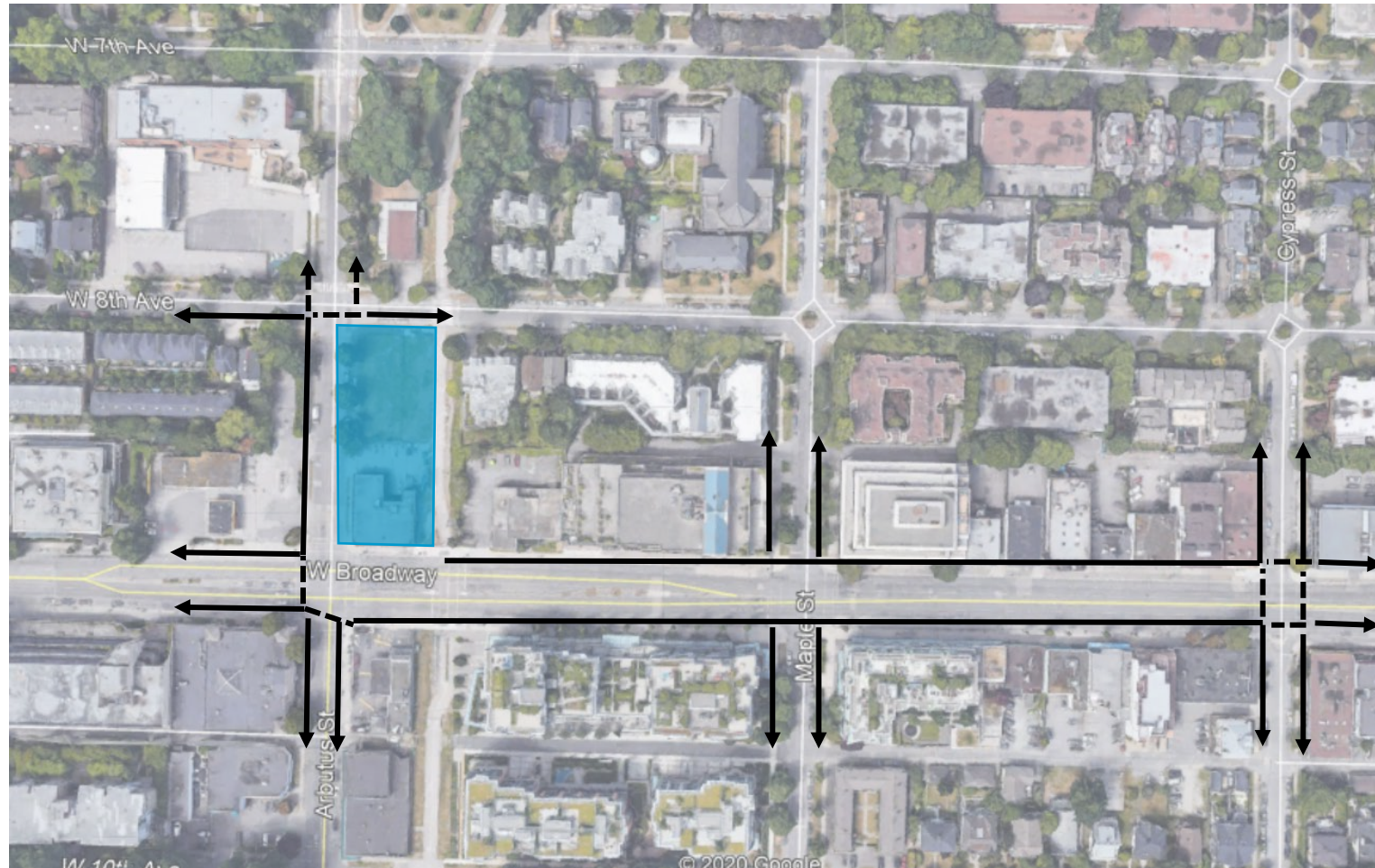
-  Traffic deck support system
-  Work Site
-  Temporary traffic deck being built
-  Entry
-  Exit



- Trucks will access the Arbutus site via existing truck routes along Arbutus and Broadway

What to expect: Pedestrians

- Sidewalks to be closed at the Arbutus Station site
- One crosswalk on the east side of the intersection
- Pedestrians will be detoured around the site with signage
- Flaggers will be available to direct pedestrians as required
- Wayfinding signs to inform pedestrians



What to expect: The Arbutus Greenway Detour

Starting later this Spring

- Preparation work begins to paint lines for the detour, construct safety barriers, send out notifications and install signage
- The Arbutus Greenway will be closed between 8th Avenue and 10th Avenue
- Cyclists will be detoured at West 6th and Cypress, to take Cypress Street to 10th Avenue to reconnect to the Arbutus Greenway
- The detour will be active until 2025



The Arbutus Greenway Detour: Safety Measures

The detour aims to safely maintain the Arbutus Greenway similar to the existing path with the following attributes:

- Two-way bike lane
- Centre line painted
- Separation between cyclists and motor vehicle traffic
- Illumination will be maintained





Mitigation Measures



Vibration Management

Project will adhere to guidelines related to vibration from construction activities

Activities that may result in some vibration include:

- Demolition of structures and pavement
- Shoring works for future station and tunnel
- Tunnel Boring
- Building the traffic deck

Noise Management

- Project will adhere to City of Vancouver noise bylaw levels
- Construction activities that generate the most noise will be carried out during core hours:
 - 07:00 a.m. to 8:00 p.m. Monday-Saturday
 - 09:00 a.m. to 8:00 p.m. Sunday/Statutory Holidays
- In 2021, we expect minimal noise during the night

Dust Control

- Water spray to reduce generation of fugitive dust during dry seasons
- Sweep and clean paved surfaces to eliminate tracking of sand and dirt

Light Management

- Task-specific lighting will be used, large area lighting will be minimized
- Physical barriers (temporary sound walls and site hoardings) will limit light spills
- Existing street lighting conditions will be maintained for traffic



Being a good neighbour



Ongoing Communications

The Project will maximize predictability and manage disruption as much as possible

- Timely information about construction, traffic and parking
- Notifications by email, newsletter, website and direct contact
- Clear signage at point of construction activities
- Where possible, mitigate construction impacts and manage issues as they arise
- Maintain business visibility and help customers access shops and services

Business Advisory Signage

- Comprehensive, temporary wayfinding signage program
- Ensures access and visibility during construction



Parking Map



Connect with us



24/7 Construction Line: 1-844-815-6114



broadwaysubway@gov.bc.ca



broadwaysubway.ca



Community Office: 1212 West Broadway
778-572-3544



**Dedicated Segment Manager and
Business/Community Relations Managers**
for day-to-day contact

Questions and Comments

