



Broadway Subway Project

Great Northern Way Information Session

April 22, 2021



Purpose

- Share information about the method of construction and timing of the Broadway Subway Project
 - Safety for residents, businesses and visitors
 - Traffic, access, parking and construction information
 - Mitigation from site activities

Presentation Overview

1. Broadway at a Glance
2. Project Team and Partners
3. Our Commitments
4. Project Overview
5. Construction Sequence
6. Ongoing Communications
7. Questions and Comments

Broadway at a Glance

- More than 125,000 people living in the corridor
- Second largest employment centre in the province, with more than 105,000 jobs along the Broadway corridor
- 110,000 transit trips each day
- One of the busiest routes for goods movement in City of Vancouver
- Largest hospital (VGH) in Western Canada
- High-tech clusters drawing commuters for work and to centres for research, innovation and education

Project Team and Partners



transportation
investment
corporation





Our Commitments



Our Commitments to You

- Communicate transparently, clearly and consistently about safety and traffic guidelines
- Provide regular updates and notice of construction activities
- Mitigate construction impacts wherever possible
- Minimize transmission of dirt, dust, light, noise and vibration

Our Commitment to Safety

Safety for the community and our teams drives every decision we make

We will:

- Install safety fences, security and signage
- Provide safest traffic and access routes
- Implement emergency and safety plans
- Monitor and inspect each aspect for safety



Our Commitment to Access

Safe and effective access management during construction is our priority

We will:

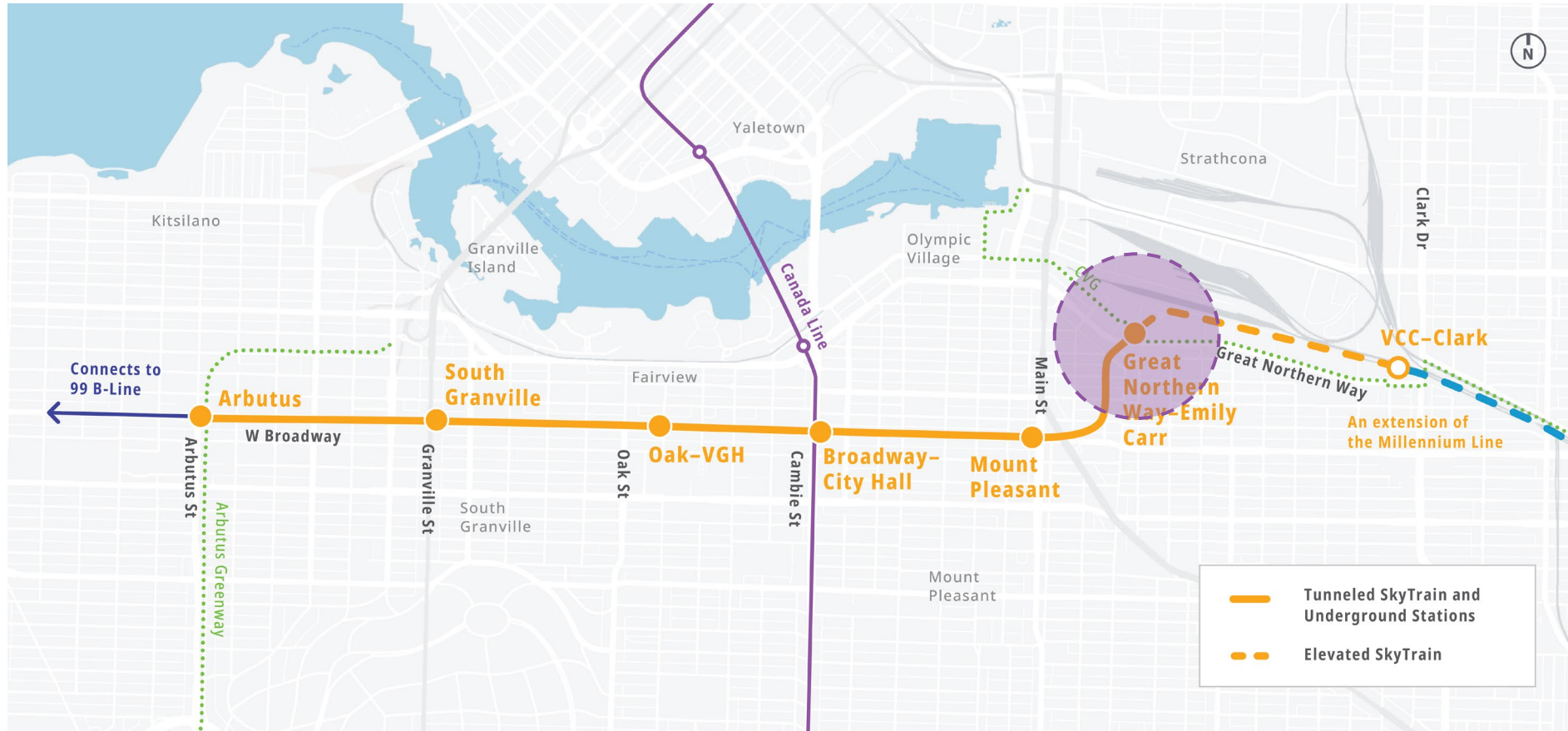
- Maintain pedestrian access to residences, local businesses
- Detour cyclist routes past the site
- Maintain access for vehicles, buses and emergency vehicles



Project Overview



Alignment Overview: 6 New Stations



Family of Stations



Great Northern Way – Emily Carr



Mount Pleasant



Broadway – City Hall



Oak – VGH

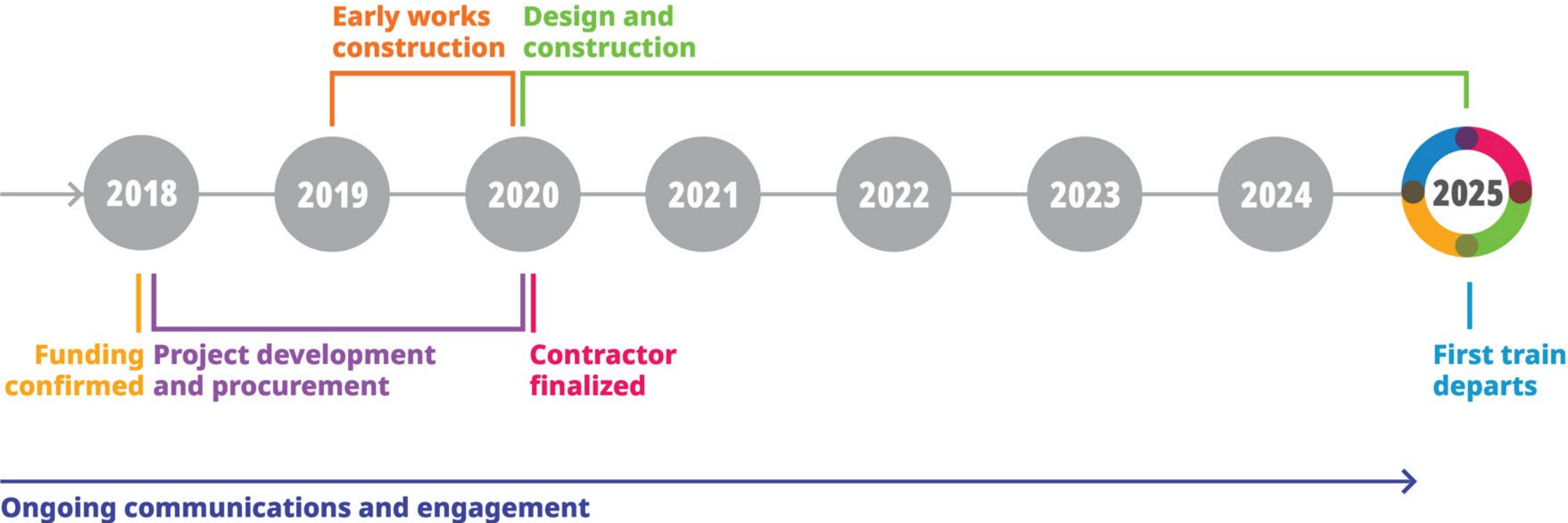


South Granville



Arbutus

Project Overall Schedule



Great Northern Way-Emily Carr Station



Artist's renderings of preliminary conceptual station design. Final streetscape and development will be subject to the City of Vancouver's Broadway Plan.

Great Northern Way-Emily Carr Station

- On the east side of Thornton Street, just north of Great Northern Way
- Facilitates access to Great Northern Way Campus including
 - Emily Carr University of Art and Design
 - Centre for Digital Media
 - Emerging creative economy hub in the False Creek Flats

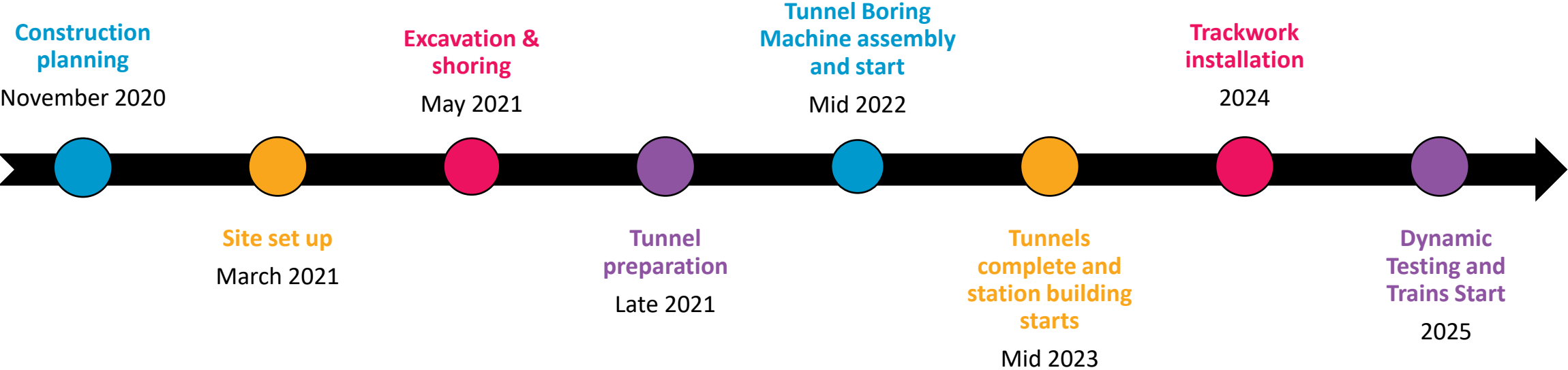




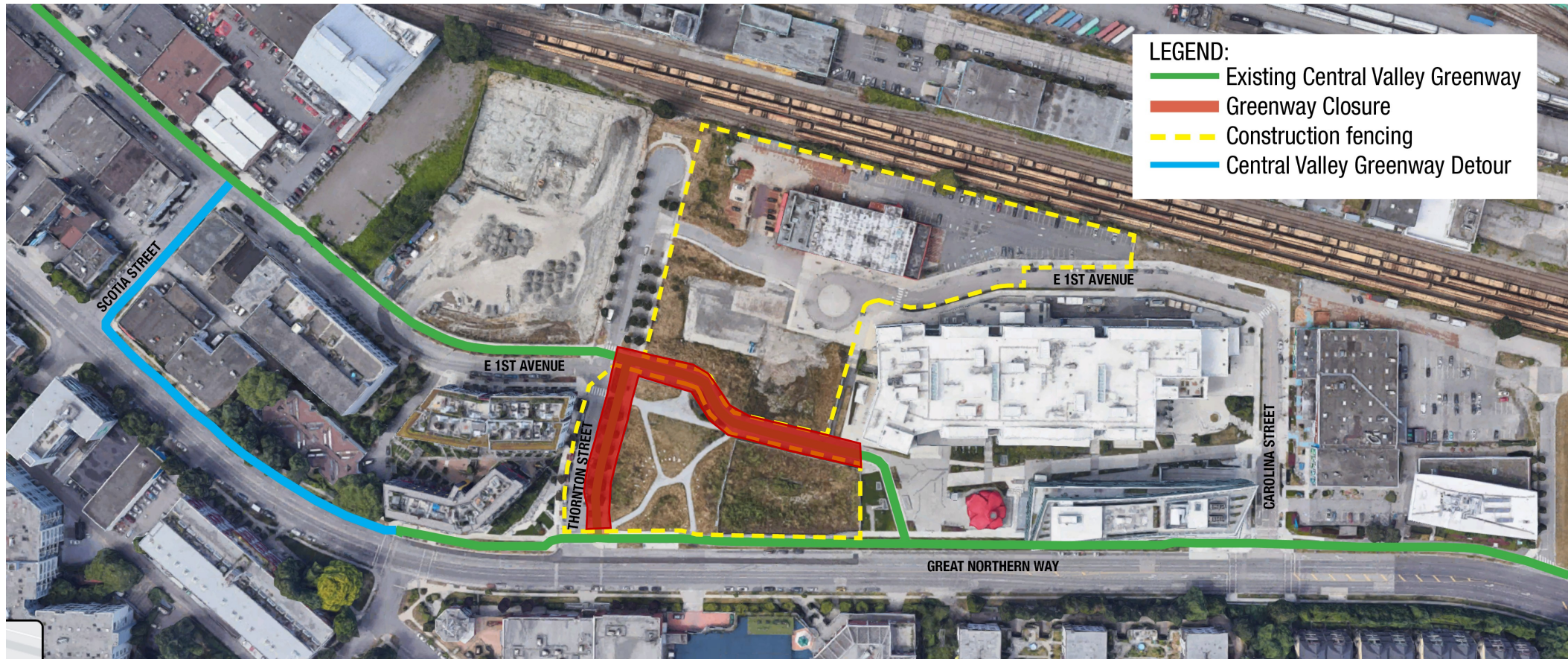
Construction Sequence



Construction Sequence






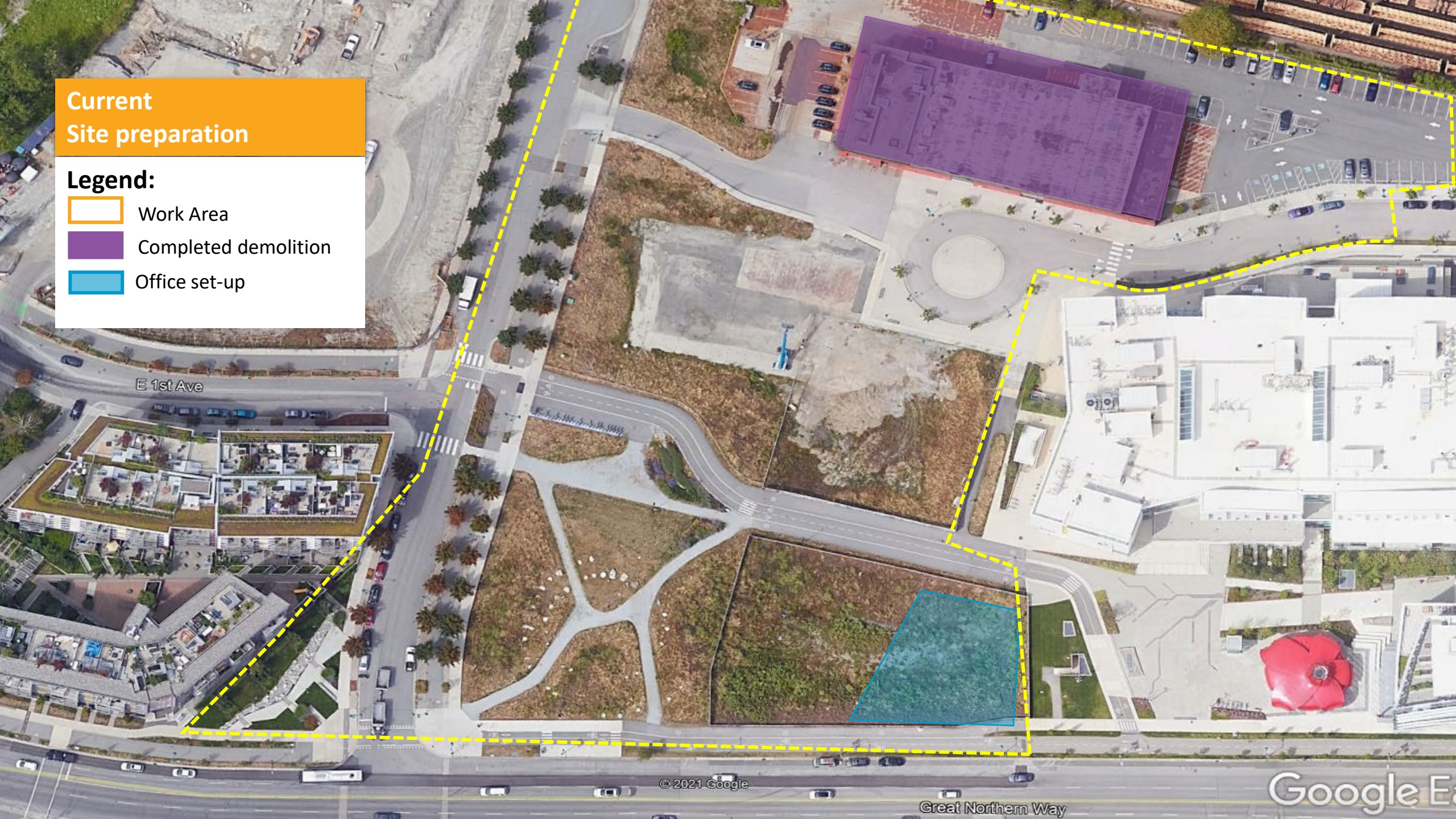
What to expect: Central Valley Greenway



Current Site preparation


Legend:

-  Work Area
-  Completed demolition
-  Office set-up

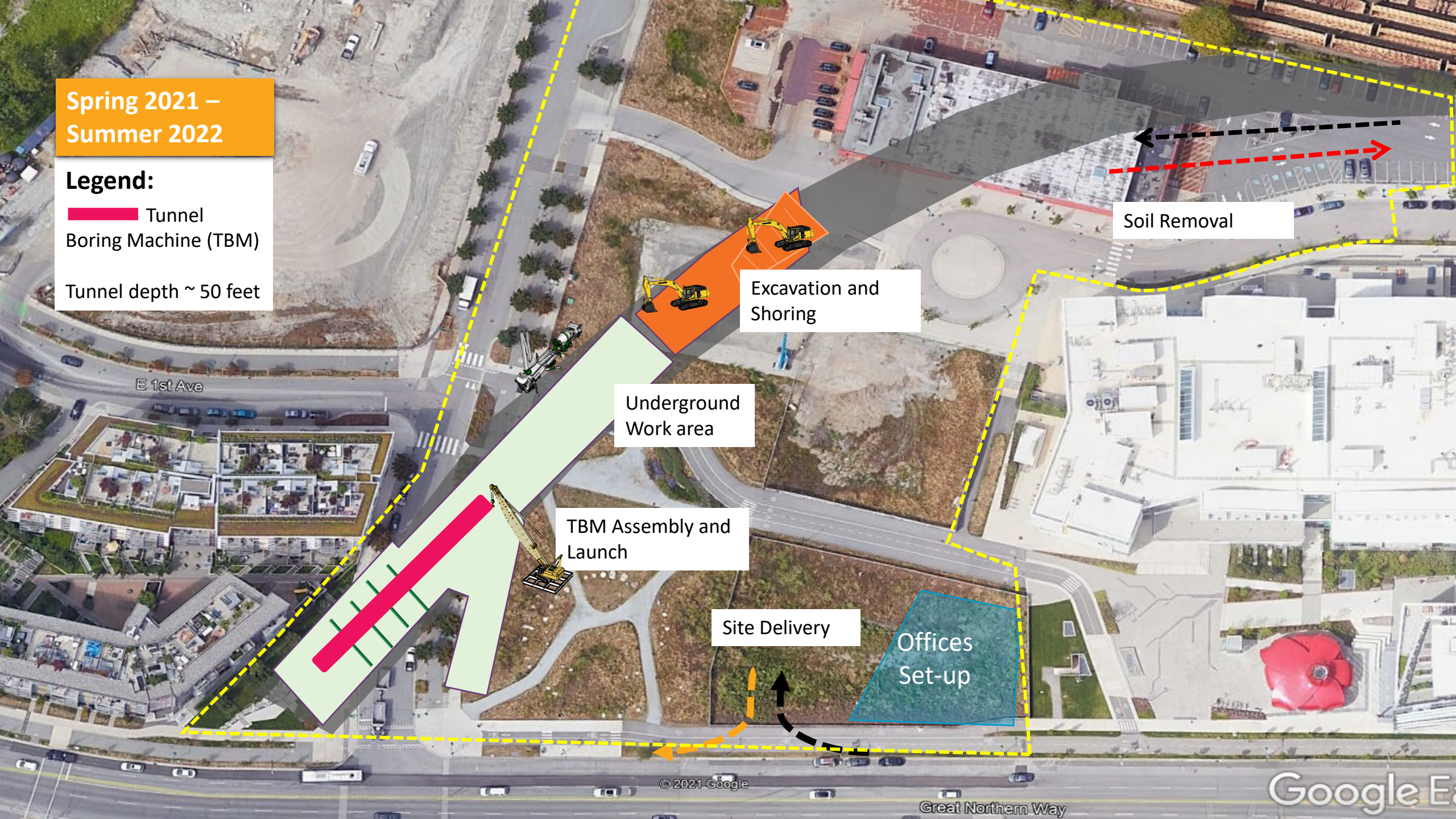


Spring 2021 –
Summer 2022

Legend:

 Tunnel
Boring Machine (TBM)

Tunnel depth ~ 50 feet



Soil Removal

Excavation and
Shoring

Underground
Work area

TBM Assembly and
Launch

Site Delivery

Offices
Set-up

Summer 2022-23

24/7 Tunnel Excavation

Above Ground
Station House

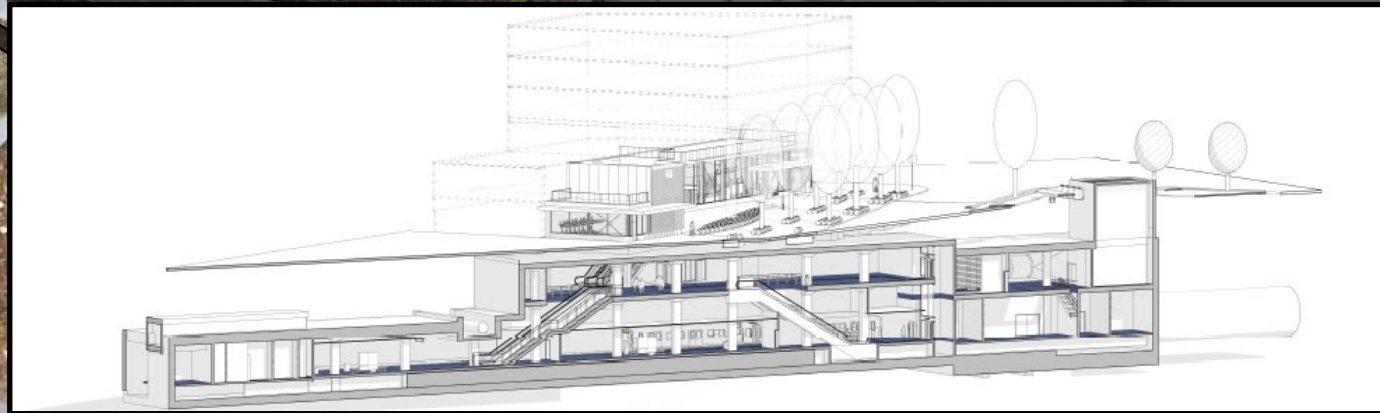


Fall/Winter 2023

E 1st Ave

Above Ground
Station House

Underground Station completed and backfilled to original ground level



2024

- Trackwork construction in the tunnels



2025

- Dynamic train testing along the tracks
- Trains operational





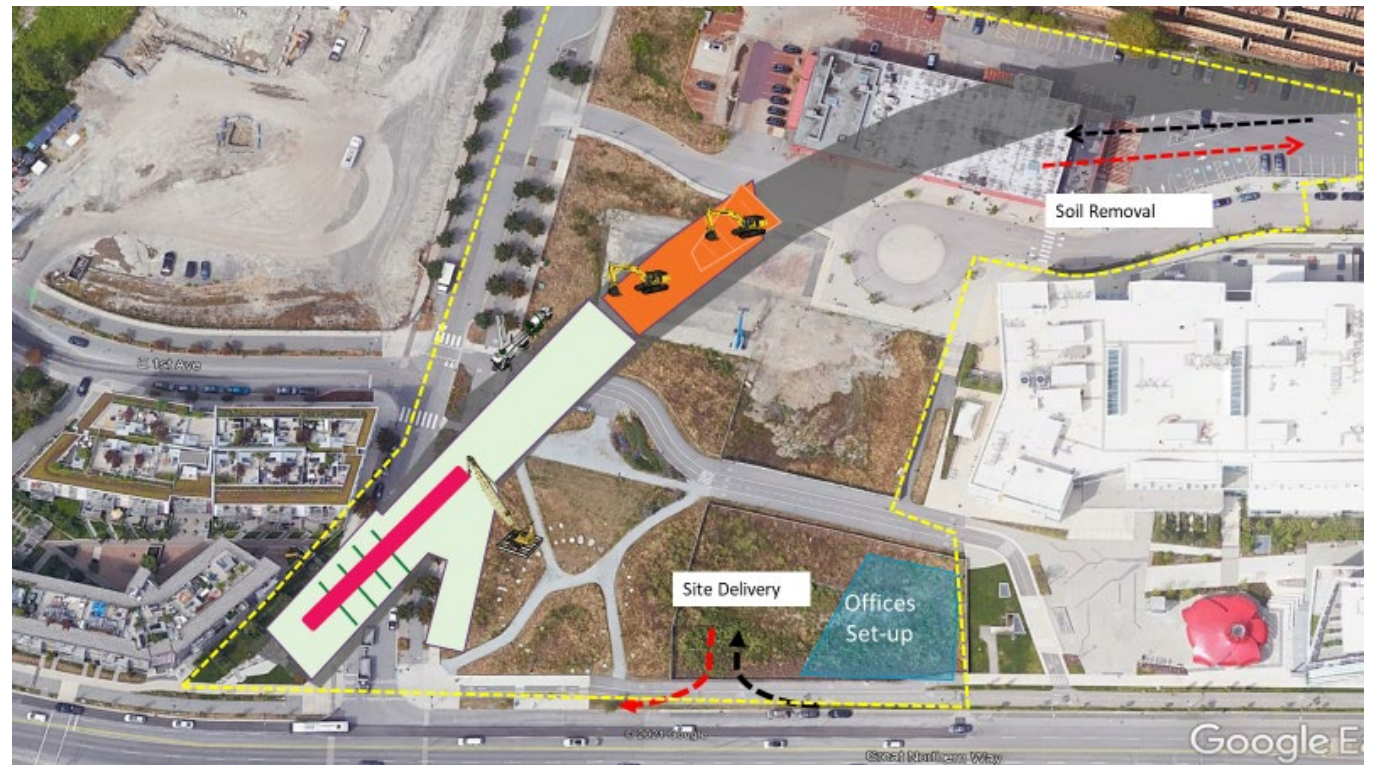
Mitigation Measures during Construction



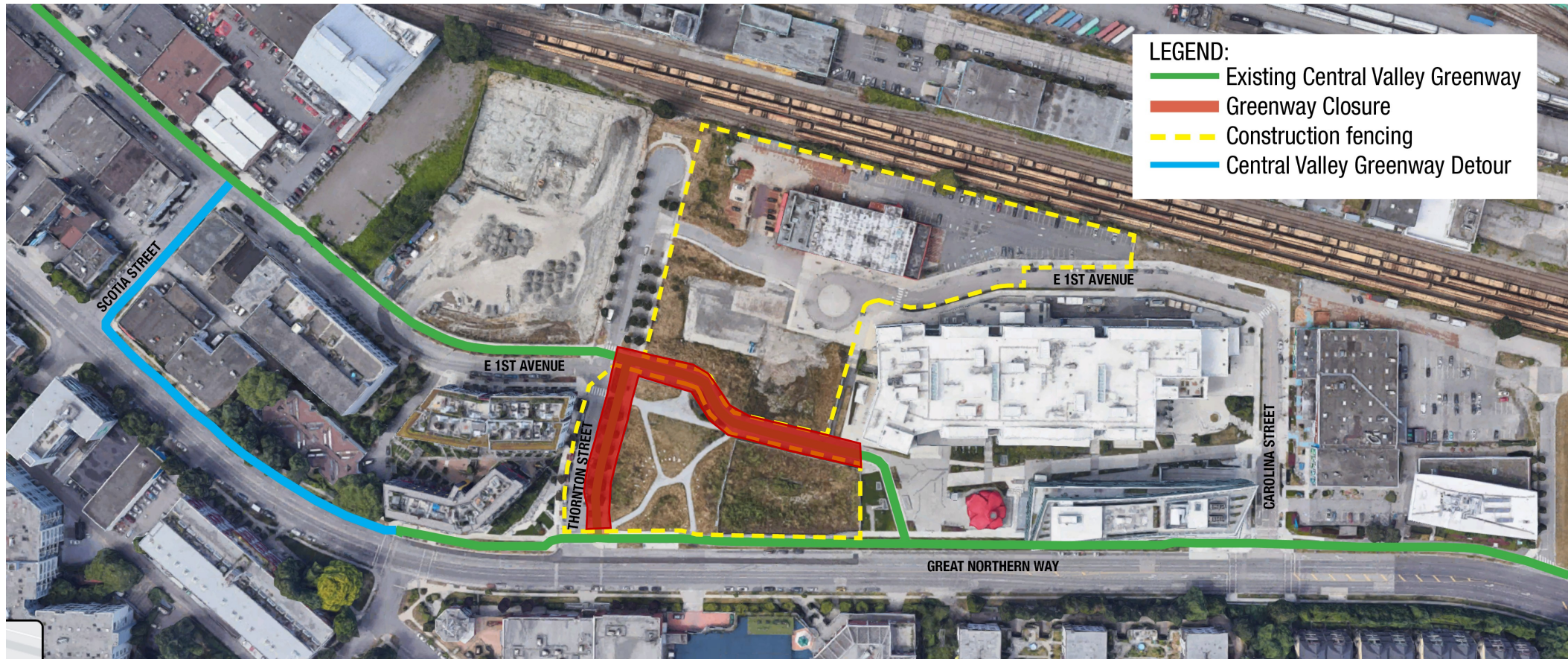
What to expect: Construction Traffic

We are committed to managing impacts to residents throughout construction

- Trucks removing excavated soil will be the primary traffic
- Trucks will use the back entrance and exit on the Great Northern Way via Foley Street



What to expect: Central Valley Greenway



Vibration Management

Project will adhere to guidelines related to vibration from construction activities and monitor vibration levels

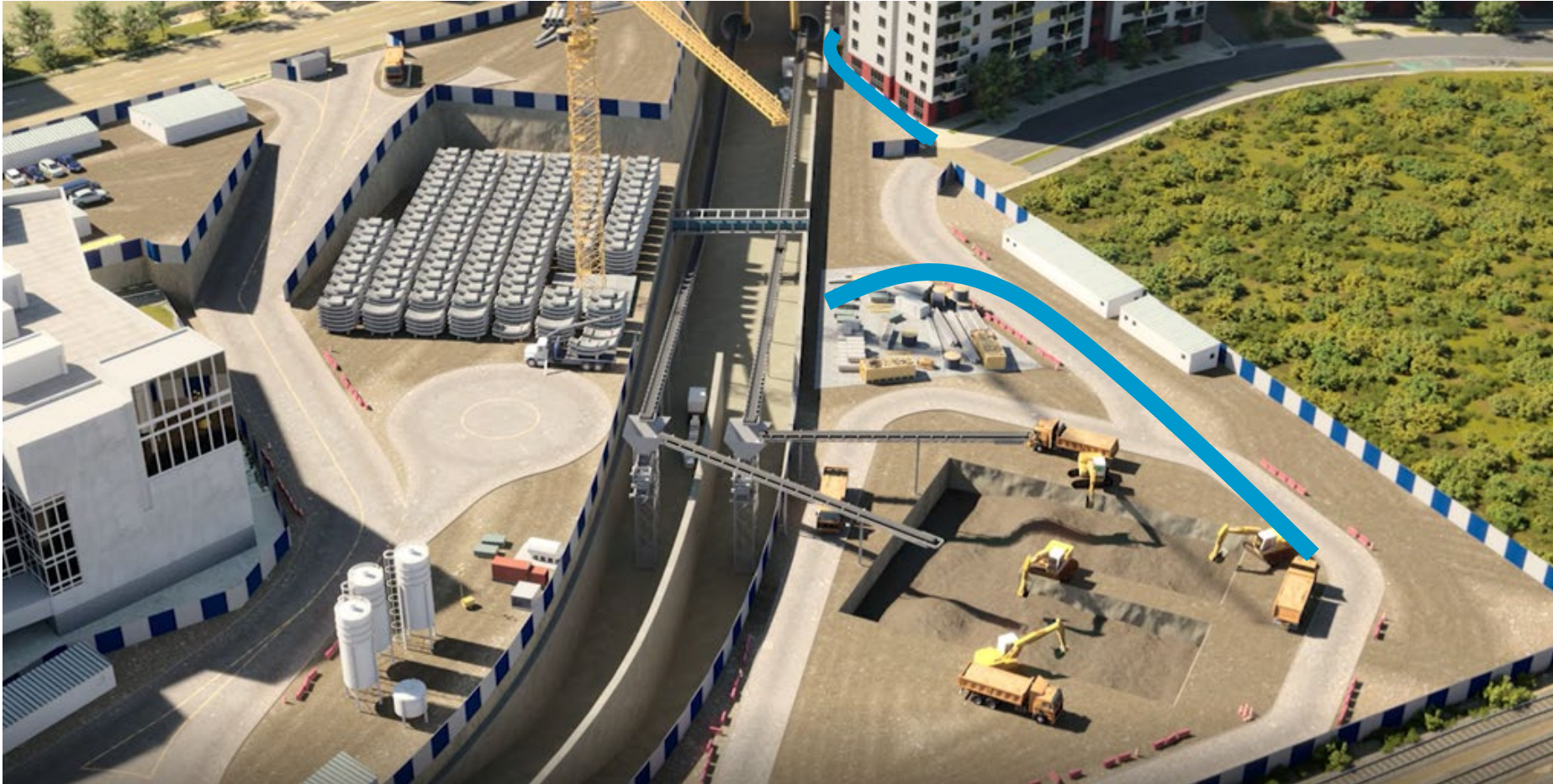
Activities that may result in some vibration include:

- Demolition of structures and pavement
- Shoring works for future station and tunnel
- Tunnel Boring

Noise Management

- Project will adhere to City of Vancouver noise bylaw levels
- Construction activities that generate the most noise will be carried out during core hours:
 - 07:00 a.m. to 8:00 p.m. Monday-Saturday
 - 09:00 a.m. to 8:00 p.m. Sunday/Stat. Holidays
- In 2021, we expect minimal noise during the night
- Tunnel activities based at Great Northern Way will proceed 24 hours seven days a week in 2022 and 2023

Vibration and Noise Management



Dust Control Measures

- Water spray to reduce generation of fugitive dust during dry seasons
- Sweep and clean paved surfaces to remove build-ups of sand and dirt
- Wheel wash at the site exit at the back entrance on East 1st Ave to eliminate mud tracking out of site

Light Management

- Task-specific lighting will be used, large area lighting will be minimized
- Physical barriers (temporary sound walls and site hoardings) will limit light spills
- Most vehicular movements occur in Northeast part of Great Northern Way

What to expect: Signage

- Notification to inform pedestrians, cyclists, transit and road users before they travel
- Clear directional signage for pedestrians, cyclists and road users



We're in the neighbourhood!

Broadway Subway Project

Central Valley Greenway Detour

In preparation for the construction of the Great Northern Way – Emily Carr Station, the Broadway Subway Project Corporation (BSCG) will detour the Central Valley Greenway, a multi-purpose route, to ensure the safety of the pedestrians and cyclists who use this path daily during construction.

What to Expect:

- Beginning in April, Thornton Street will be closed to all traffic.
- The Detour begins in May and reroutes cyclists from Great Northern Way to East 1st and Scotia St.
- A paved path with concrete barriers will separate cyclists and pedestrians from vehicle traffic.
- Increased construction vehicles along Great Northern Way.



Maintaining Safety and Access

- The public will be protected from the work area with fences, security and signage.
- We will maintain access to residences, and businesses.
- Work will be performed in the safest manner possible, in accordance with COVID-19 safety measures.

Community Office:
778-572-3544

24/7 Construction Information:
1-844-815-6114

broadwaysubway@gov.bc.ca
broadwaysubway.ca





Being a good neighbour



Ongoing Communications

The Project will maximize predictability and manage disruption as much as possible

- Timely information about construction, traffic and parking
- Notifications by email, newsletter, website and direct contact
- Where possible, mitigate construction impacts and manage issues as they arise
- Maintain business visibility and help customers access shops and services

Connect with us



24/7 Construction Line: 1-844-815-6114



broadwaysubway@gov.bc.ca



broadwaysubway.ca



Community Office: 1212 West Broadway
778-572-3544



Dedicated Segment Manager for day-to-day contact

Questions and Comments

