



Broadway Subway Project

Mount Pleasant Station Information Session
April 27, 2021



Purpose

- Share information about the method of construction and timing of the Broadway Subway Project near the Mount Pleasant Station
 - Safety for residents, businesses and visitors
 - Traffic, access, parking and construction information
 - Construction mitigation

Presentation Overview

1. Broadway at a Glance
2. Project Team and Partners
3. Our Commitments
4. Project Overview
5. Construction Sequence
6. Ongoing Communications
7. Questions and Comments

Broadway at a Glance

- More than 125,000 people living in the corridor
- Second largest employment centre in the province, with more than 105,000 jobs along the Broadway corridor
- 110,000 transit trips each day
- One of the busiest routes for goods movement in City of Vancouver
- Largest hospital (VGH) in Western Canada
- High-tech clusters drawing commuters for work and to centres for research, innovation and education

Project Team and Partners



transportation
investment
corporation





Our Commitments



Our Commitments to You

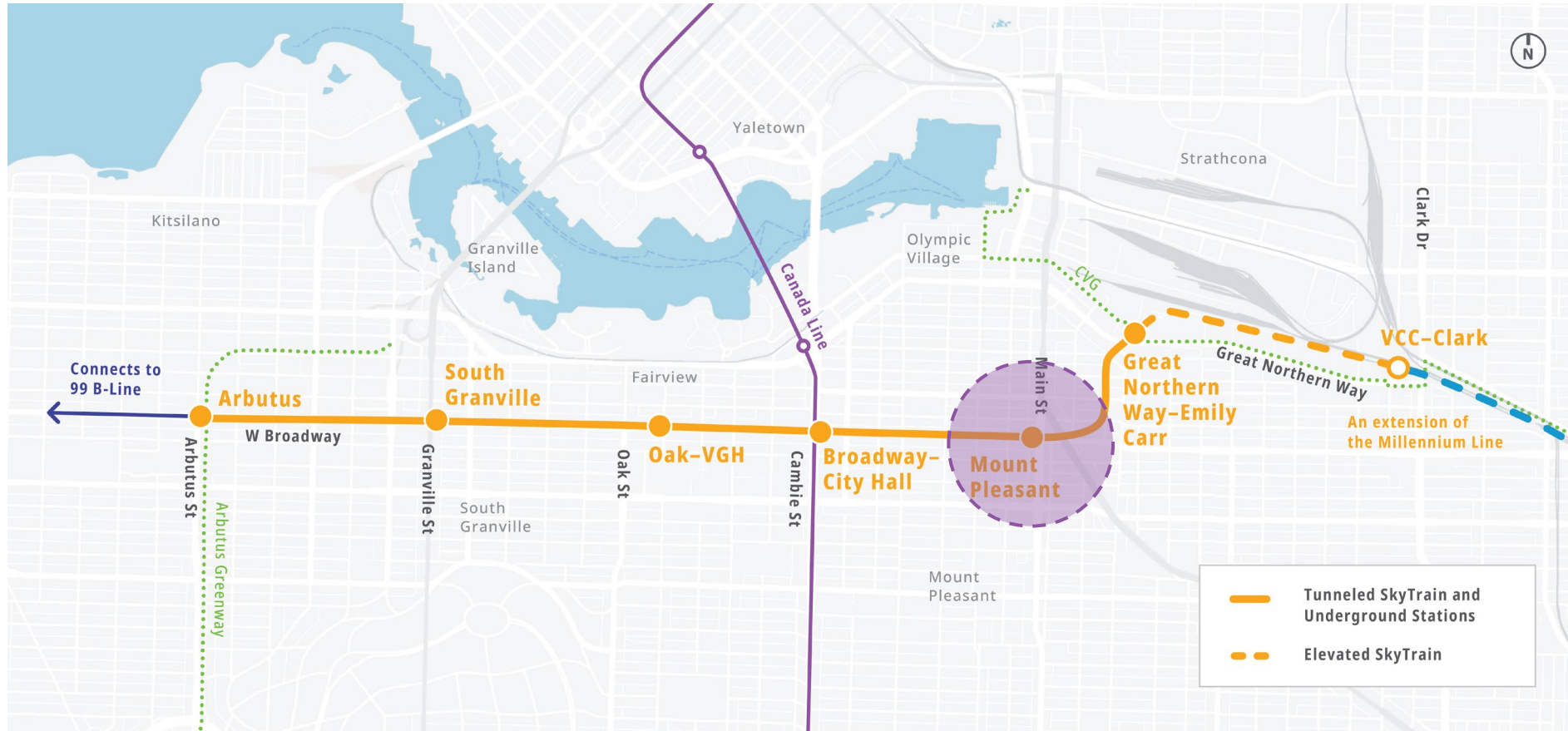
- Communicate transparently, clearly and consistently
- Provide regular updates and notice of construction activities
- Mitigate construction impacts wherever possible
- Minimize transmission of dirt, dust, light, noise and vibration
- Safety: for public and for workers
- Mobility: Buses, vehicles, pedestrians, cyclists
- Access: Businesses, residences, services



Project Overview



Alignment Overview: 6 New Stations



Family of Stations



Great Northern Way - Emily Carr



Mount Pleasant



Broadway - City Hall



Oak - VGH

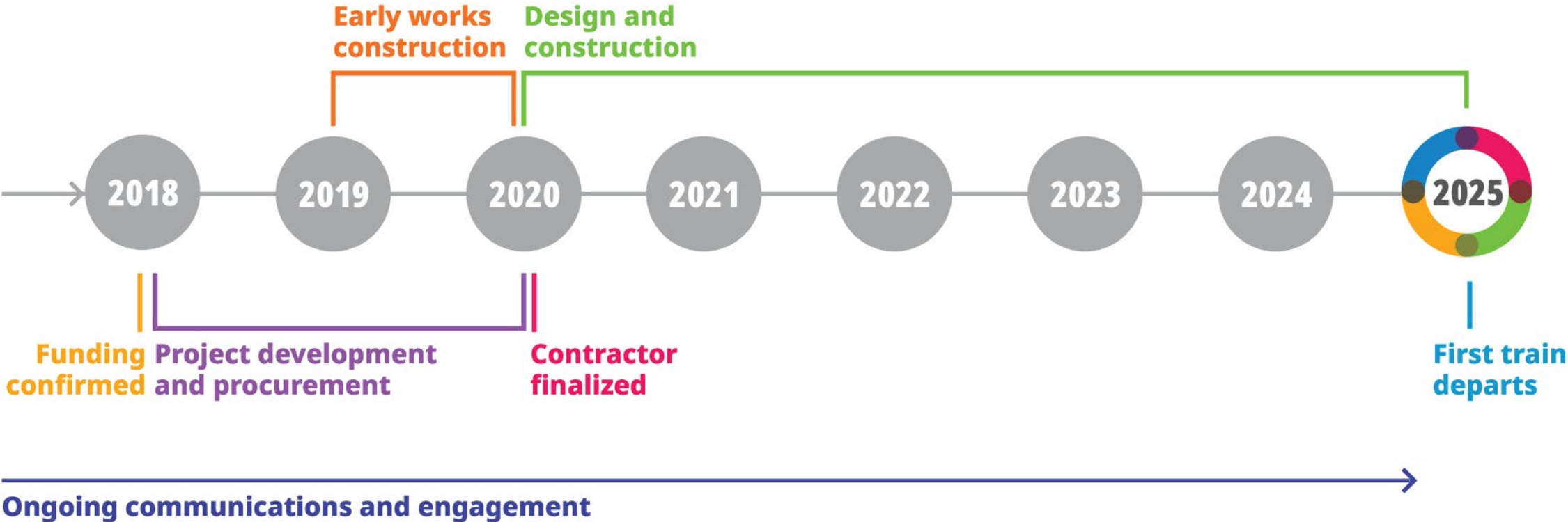


South Granville



Arbutus

Project Overall Schedule



Mount Pleasant Station



Artist's renderings of preliminary conceptual station design. Final streetscape and development will be subject to the City of Vancouver's Broadway Plan

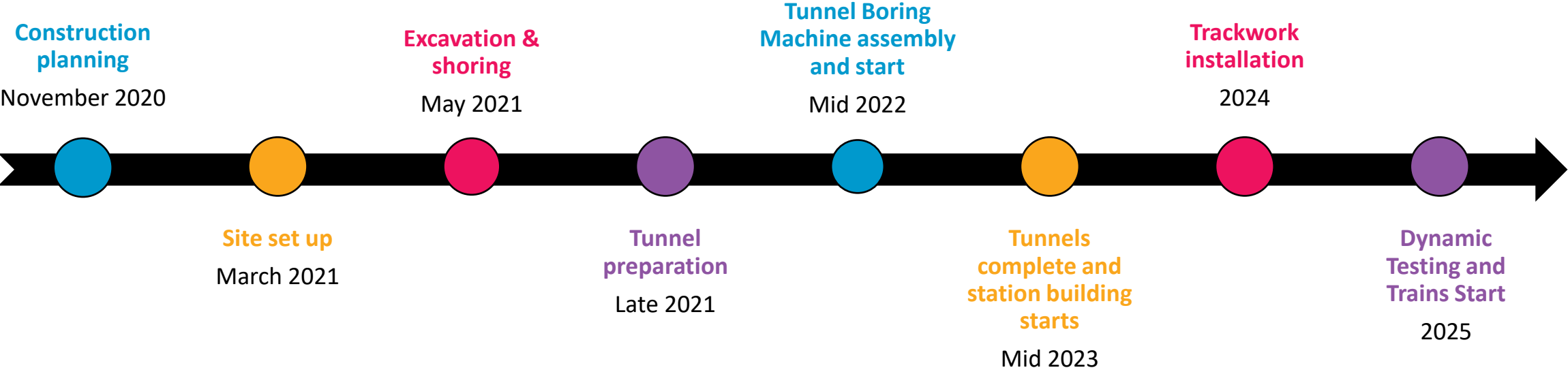
- At the southwest corner of Broadway and Main Street
- Facilitates connectivity to the restaurants and shops of Main Street and the growing business and residential community in Mount Pleasant



Construction Sequence



Construction Sequence



Innovative Engineering

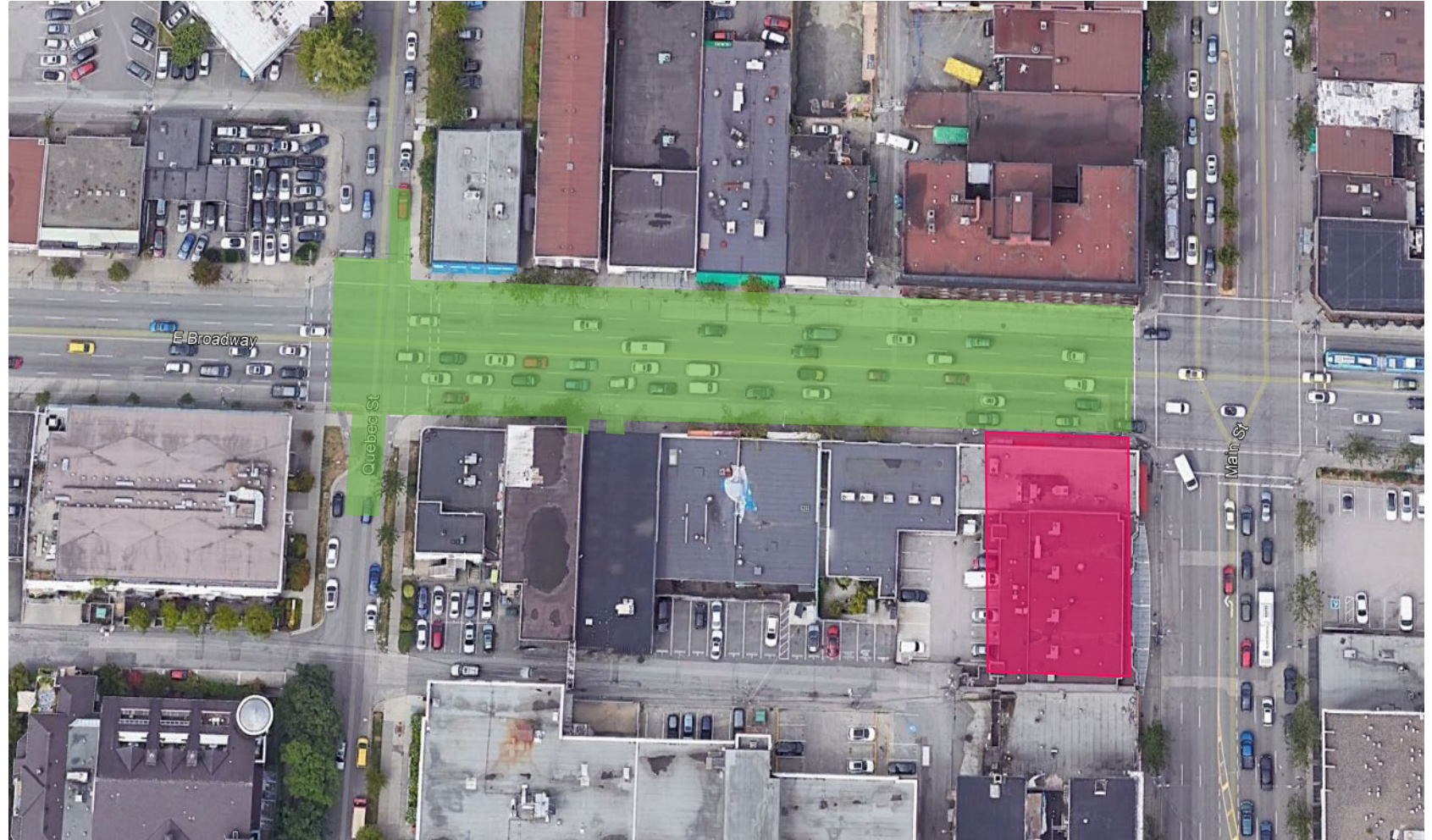
Implement a solution to manage traffic and construction in one of the busiest corridors in North America during construction

- Maintain traffic access throughout construction
- Minimize disruption to businesses, residents and visitors
- Continue access to public transit
- Maintain pedestrian access to residences, businesses and services

Station Location Overview

Legend:

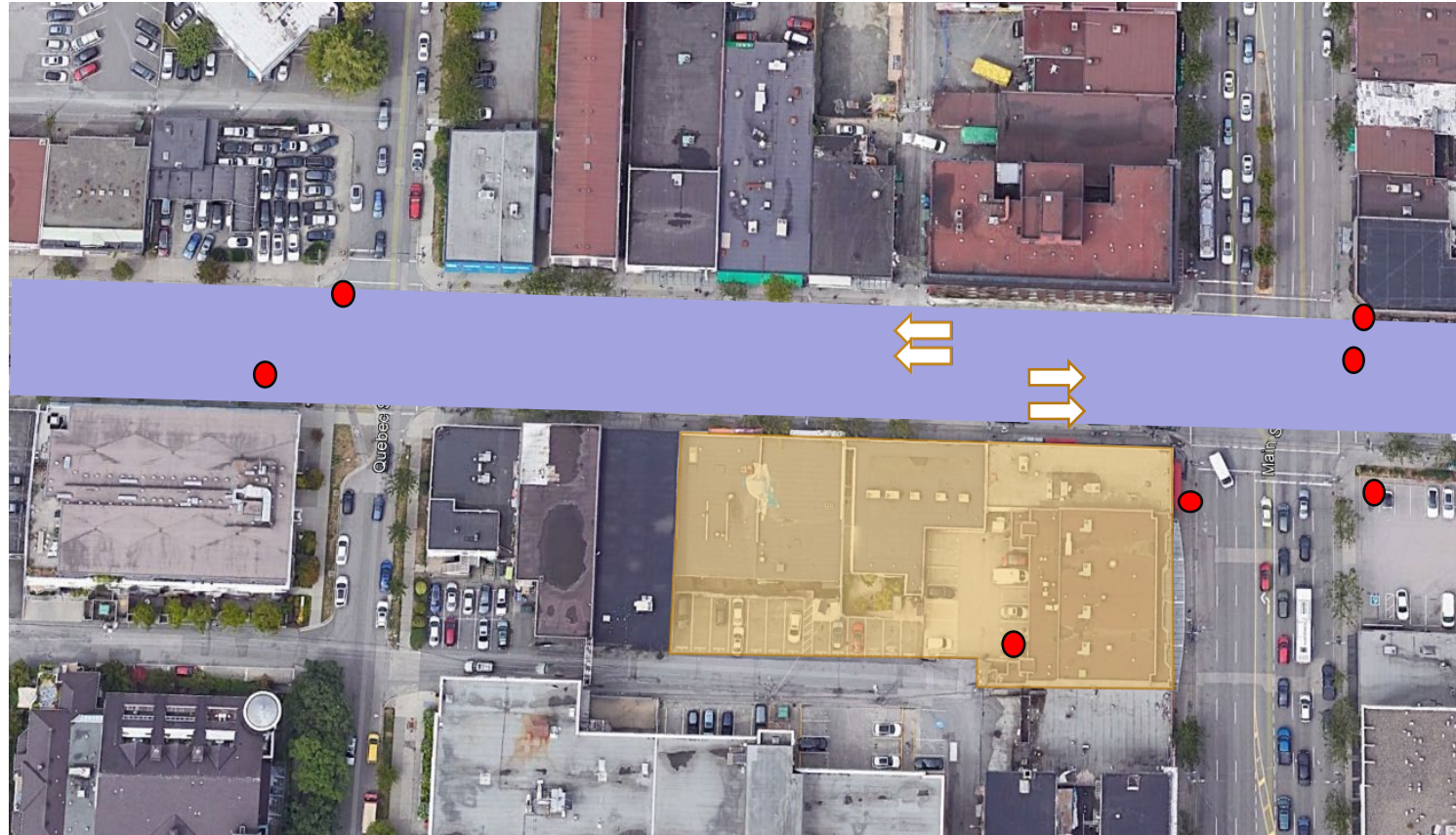
- Underground Station Work Area
- Future Station Entrance



Geotechnical Investigation and Building Demolition Spring 2021

Legend:

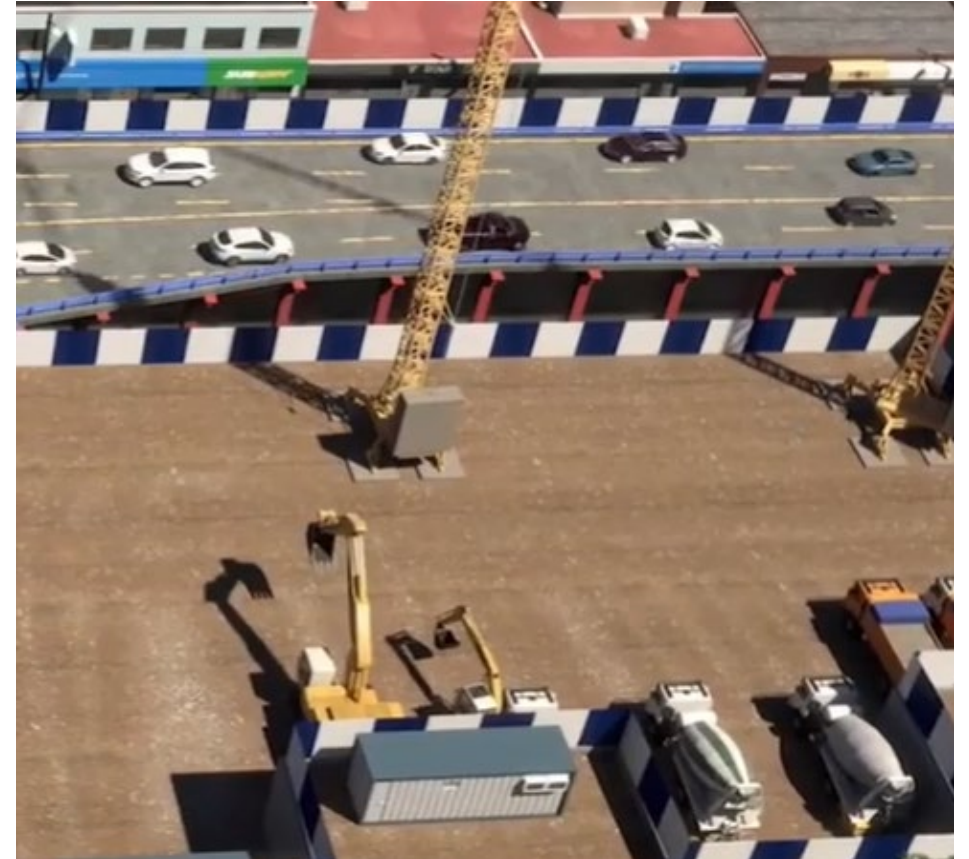
- Demolition Zone
- Open traffic flow
- Bore holes



- Geotechnical investigations collect information about the ground conditions that help inform our construction plans
- To prepare the site of the future Mount Pleasant station, buildings were demolished beginning in February and finishing in April
- During demolition there were some temporary traffic detours

Maintaining Traffic Flow along Broadway

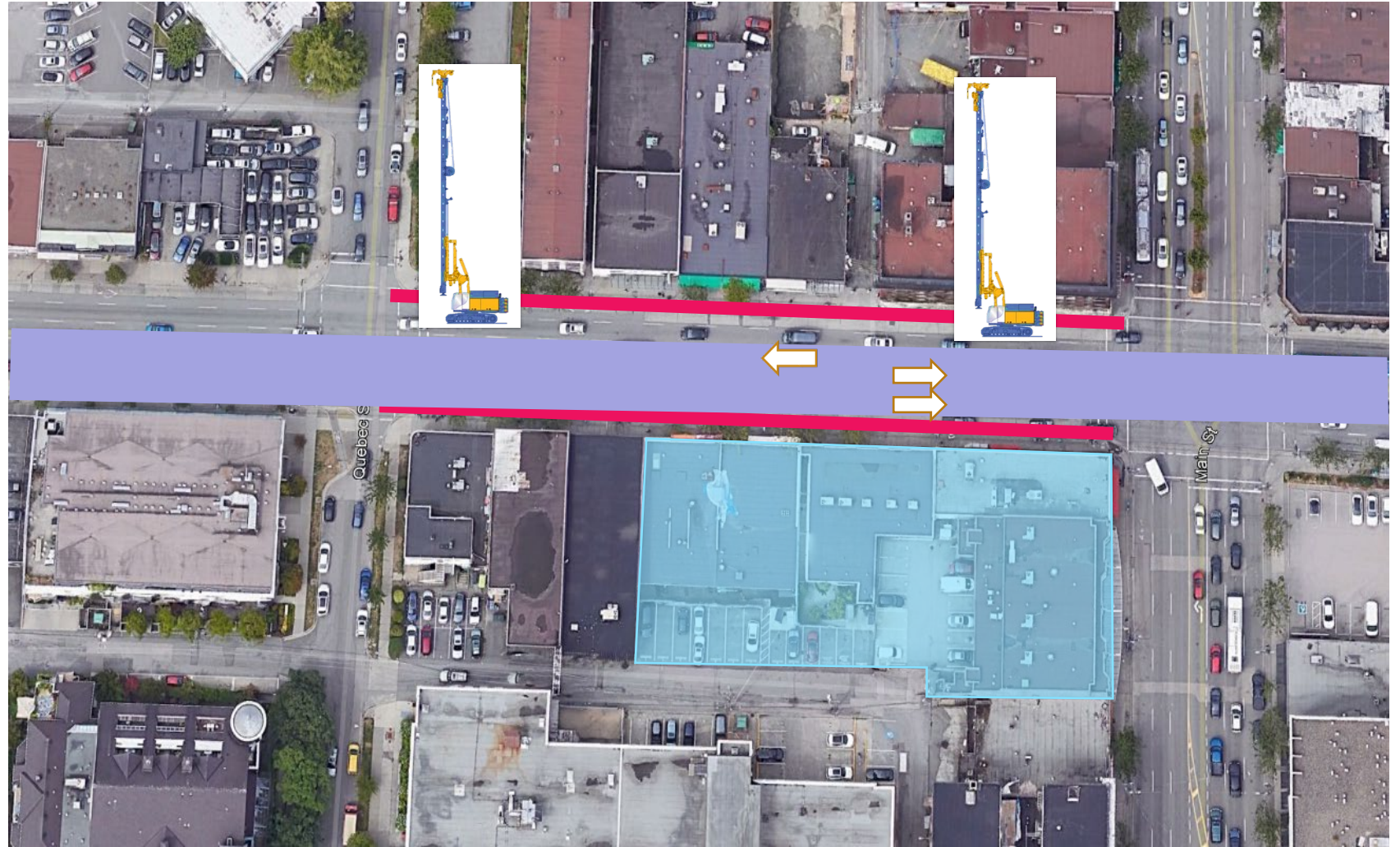
- 3 lanes of traffic, two eastbound and one westbound, will be operational while the traffic decking is installed at the beginning of construction
- Once the traffic deck is complete, 4 lanes of traffic will be opened and maintained until construction completion
- Short-term lane closures for utility relocation
- Traffic signals modifications will be required at intersections to accommodate lane re-alignment



Drilling and Inserting Columns Spring 2021

Legend:


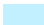


- Traffic Deck Support System
- Work Site
- Open traffic flow



- Stage 1: Lanes closed to traffic on the south side of East Broadway during drilling works on the south side
- Stage 2: Lanes closed to traffic on the north side of East Broadway during drilling works on the north side

Excavation and Traffic Deck Installation Summer 2021

Legend:

-  Traffic deck support system
-  Work Site
-  Open traffic flow
-  Temporary traffic deck being built


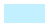




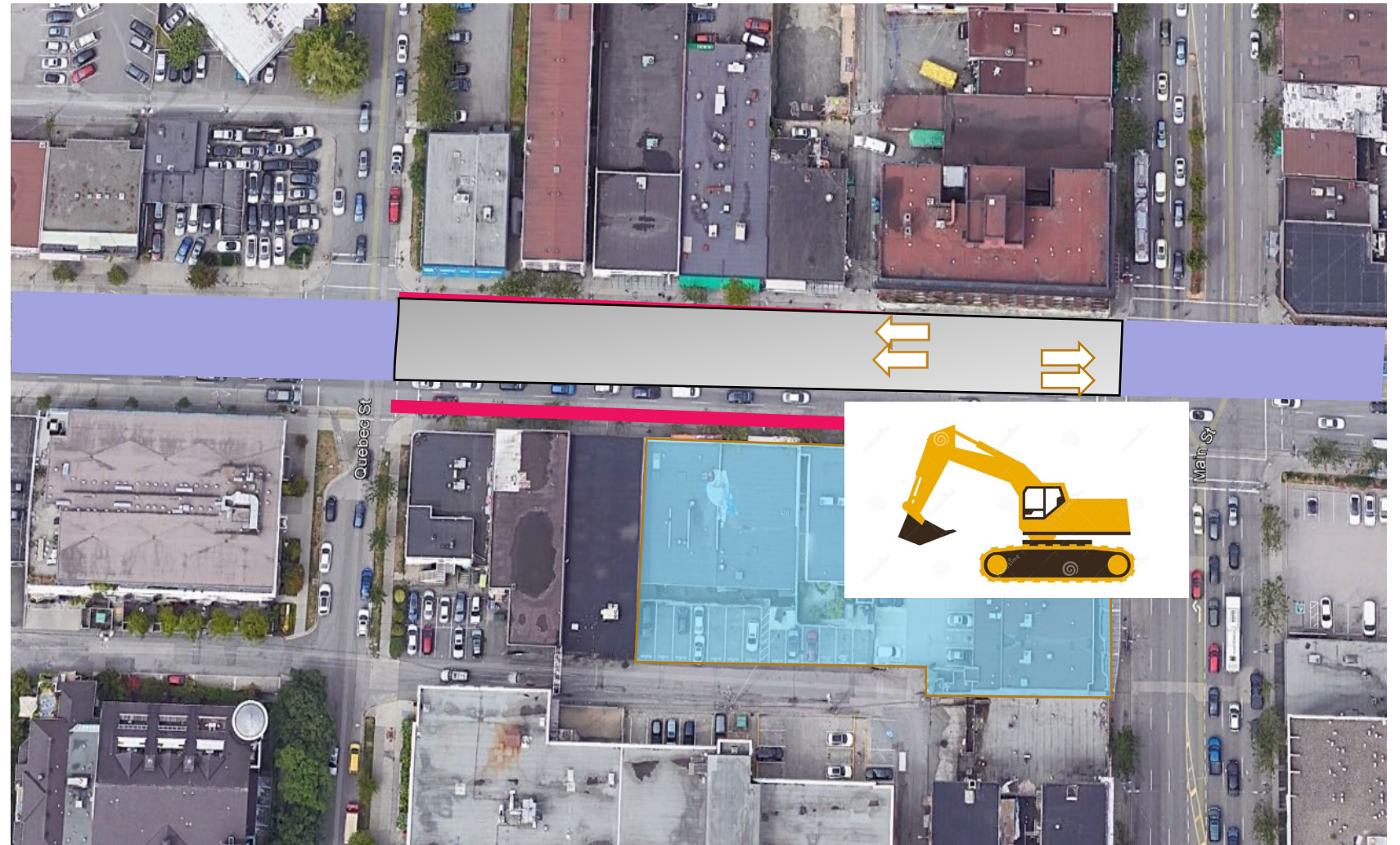
- Stage 3: North side lanes closed to traffic during excavation and as the traffic deck is being built on the north side

Excavation and Traffic Deck Installation

Fall 2021

Legend:

-  Traffic deck support system
-  Work Site
-  Open traffic flow
-  Temporary traffic deck open



- Stage 4 and 5: Four lanes of traffic are open, two in each direction
- Underground excavation continues

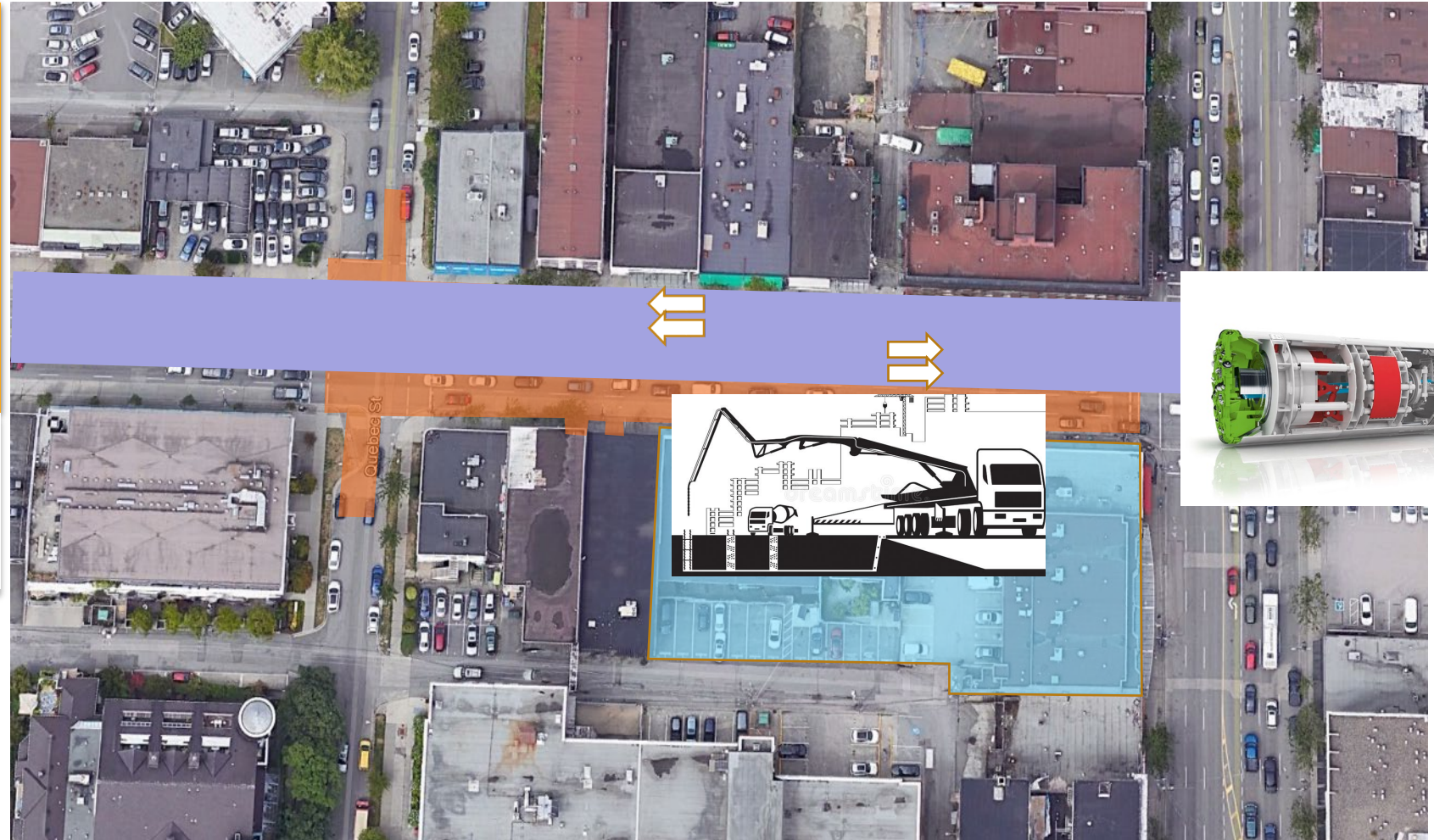
Preparing for the TBMs
Summer 2021 to Summer 2022

TBMs arrive
Summer 2022

Construct Underground Station
2022 - 2024

Legend:

- Underground Project Work Area
- Work Site
- Open traffic flow

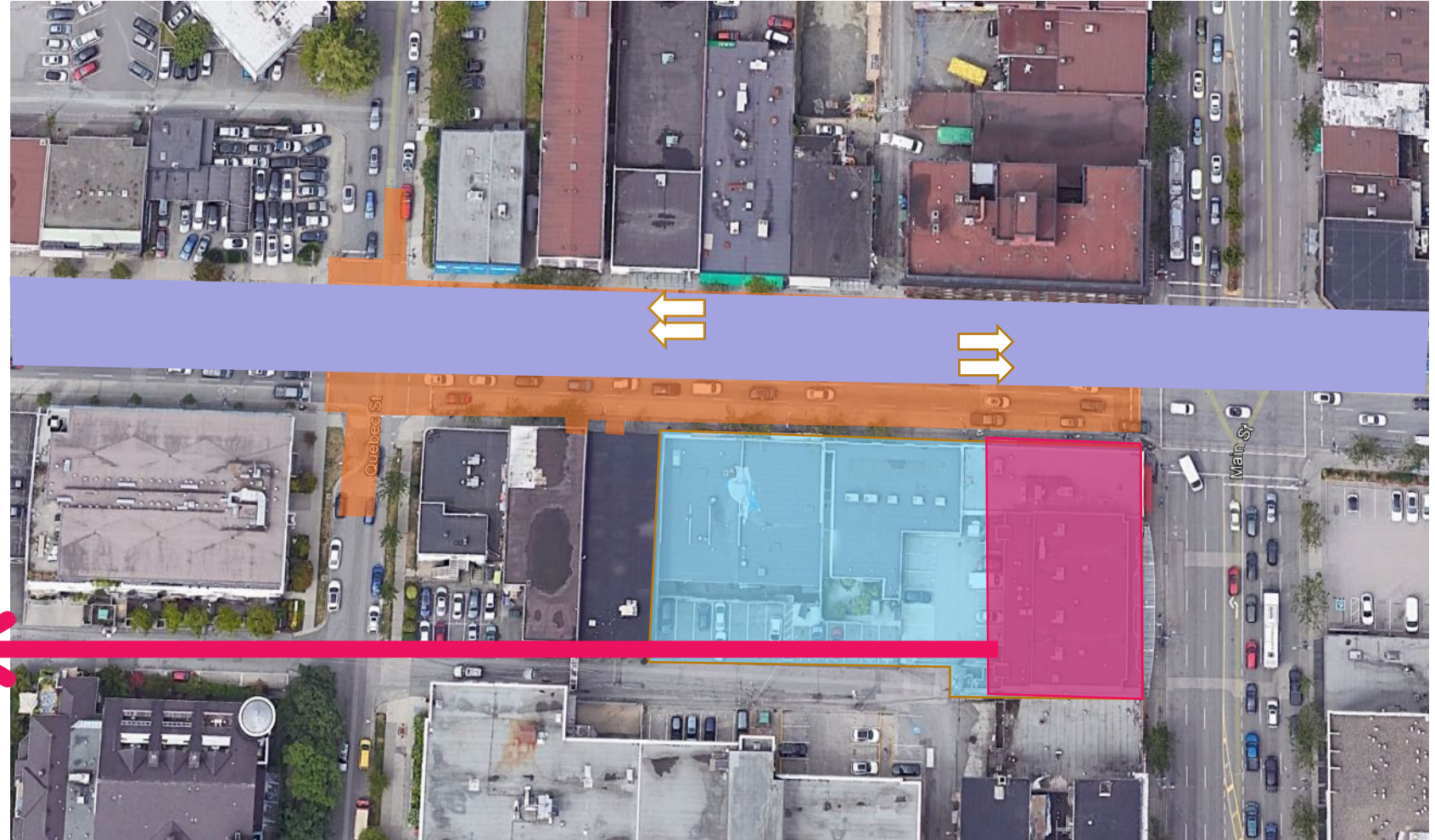


- Pour concrete to prepare the tunnel for the tunnel boring machine (18m below street)
- TBMs arrive and traverse past station
- Traffic flows smoothly above this work on the traffic deck

Construct Above Ground Station Fall 2023-2024

Legend:

- Underground Project Work Area
- Work Site
- Open traffic flow
- Future Station

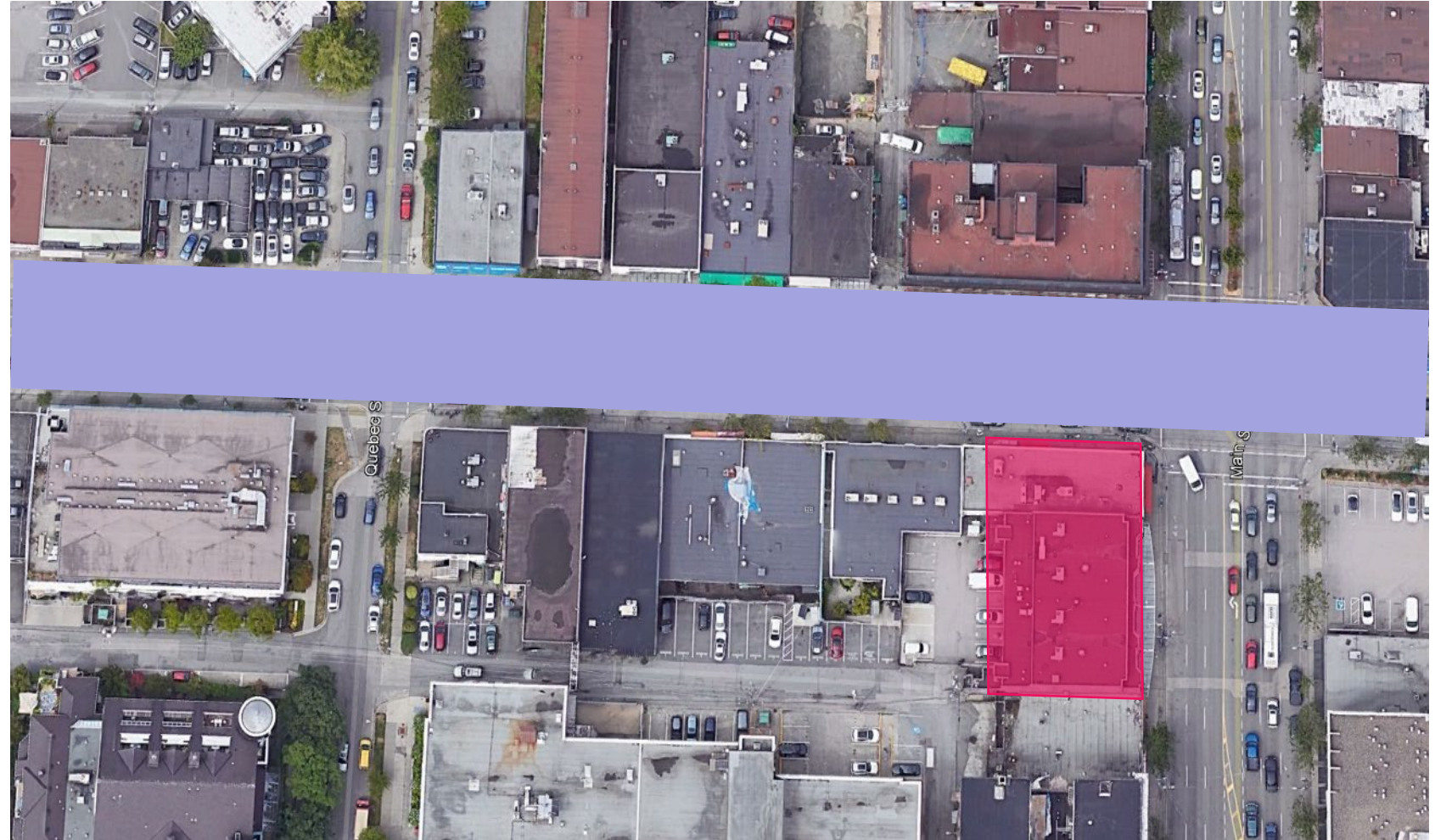


- Construction of the above ground station begins
- Finishing touches on the below ground station construction continues

Restoration of the Surface 2024-2025

Legend:

- Open traffic flow
- Completed Station



- Backfill the underground station
- Removal of the traffic deck
- Repaving of road surface
- Detours removed and traffic returns to the new normal

Train Track Construction 2024



- Track construction works begin

Train Testing 2025



- Dynamic train testing along the tracks
- Trains operational



Traffic



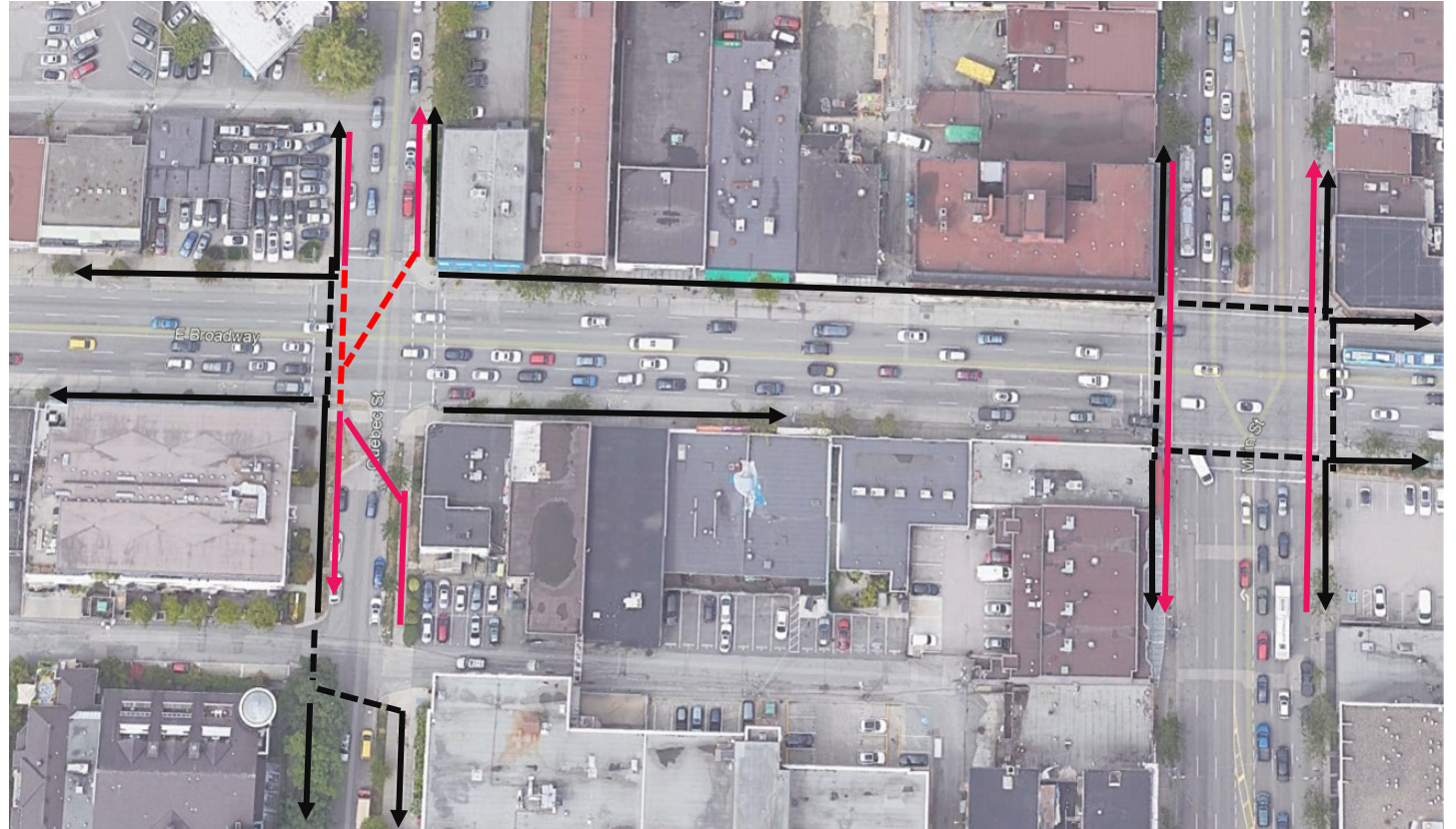
What to expect: Commuter Traffic

We are committed to mitigating impacts throughout construction

- 3 lanes of traffic, two eastbound and one westbound, will be operational while the traffic decking is installed at the beginning of construction
- 4 lanes of traffic following traffic deck installation
- Short-term lane closures for utility relocation works along Main and surrounding streets
- Traffic signals modifications will be required at Quebec St. and Main St. intersections to accommodate lane re-alignment
- Temporary bus stop will be established and maintained
- Loading zone on southside of Broadway will be relocated to Quebec St., south of Broadway

What to expect: Pedestrians and Cyclists

- Sidewalk on the north side of Broadway will be maintained
- Sidewalks at the station entrance site will be closed
- Pedestrians will be detoured around the site with signage
- Flaggers will be available to direct pedestrians
- Business Wayfinding signages to inform pedestrians



Legend

—→ Pedestrian path

- - -→ Pedestrian crossroad

—→ Cyclist route

- - -→ Cyclist crossroad



Mitigation Measures



Vibration Management

Project will adhere to guidelines related to vibration from construction activities and monitor vibration levels

Here are activities where you may expect some vibration:

- Demolition of structures and pavement
- Shoring works for future station and tunnel
- Tunnel Boring
- Building the traffic deck

Noise Management

- Project will adhere to City of Vancouver noise bylaw level
- Construction activities that generate the most noise will be carried out during core hours:
 - 07:00 a.m. to 8:00 p.m. Monday-Saturday
 - 09:00 a.m. to 8:00 p.m. Sunday/Stat. Holidays
- In 2021, we expect minimal noise during the night

Dust Control

- Water spray to reduce generation of fugitive dust during dry seasons
- Sweep and clean paved surfaces to remove build-ups of sand and dirt

Light Management

- Task-specific lighting will be used, large area lighting will be minimized
- Physical barriers (temporary sound walls and site hoardings) will limit light spills
- Existing street lighting conditions will be maintained for traffic



Being a good neighbour



Ongoing Communications

The Project will maximize predictability and manage disruption as much as possible

- Timely information about construction, traffic and parking
- Notifications by email, newsletter, website and direct contact
- Clear signage at point of construction activities
- Where possible, mitigate construction impacts and manage issues as they arise
- Maintain business visibility and help customers access shops and services

Business Advisory Signage

- Comprehensive, temporary wayfinding signage program
- Ensures access and visibility during construction



Parking Map



Connect with us



24/7 Construction Line: 1-844-815-6114



broadwaysubway@gov.bc.ca



broadwaysubway.ca



Community Office: 1212 West Broadway
778-572-3544



**Dedicated Segment Manager and
Business/Community Relations Manager**
for day-to-day contact

Questions and Comments

