

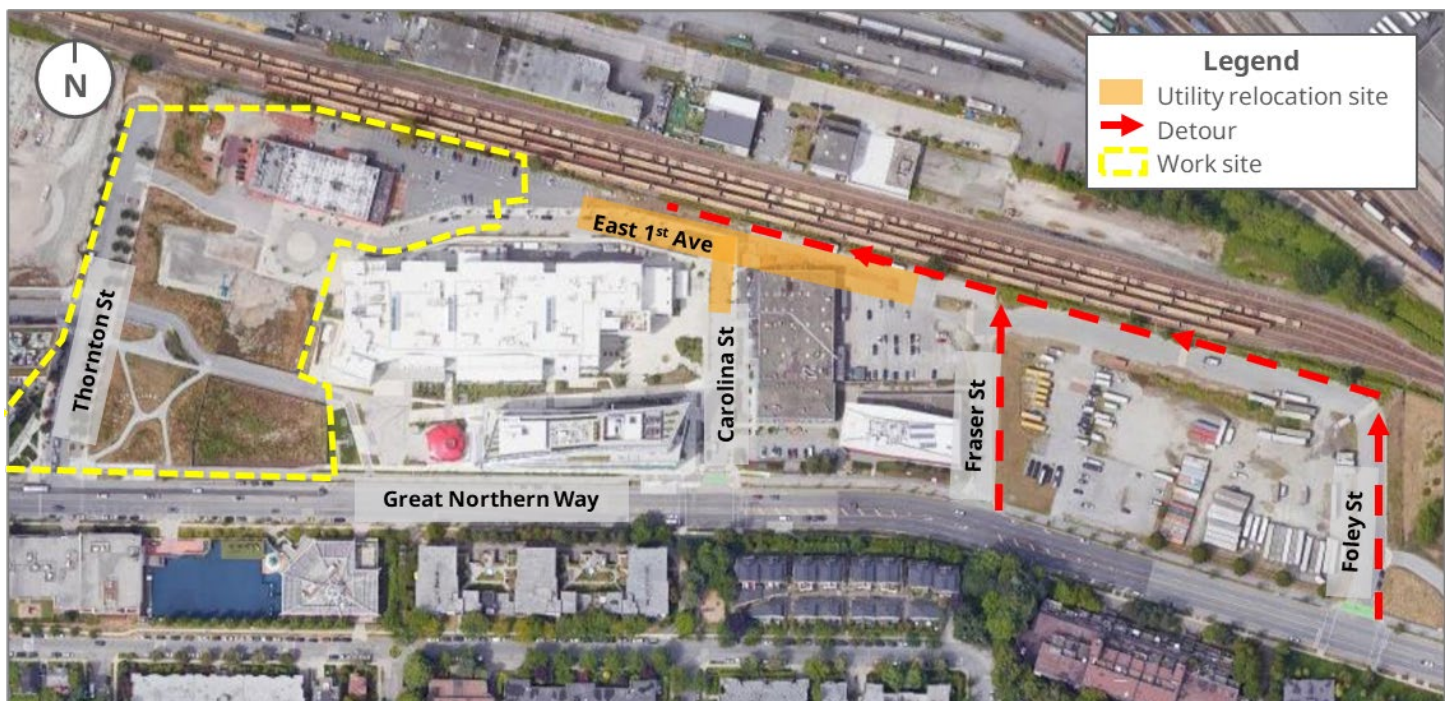
# Utility relocations along East 1<sup>st</sup> Avenue and Carolina Street near the future Great Northern Way – Emily Carr Station

July 26, 2021

The Broadway Subway Project Corporation (BSPC) will be in your neighbourhood relocating utilities ahead of construction of the elevated guideway. As part of this work, BSPC has identified water lines and sanitary sewer connections to various buildings on Carolina Street and East 1<sup>st</sup> Avenue that need to be relocated.

Starting as early as the week of August 16 crews will be working during the day to relocate the utilities. Traffic access to East 1<sup>st</sup> Avenue from Carolina Street will be closed. Drivers are invited to access East 1<sup>st</sup> Avenue from Foley or Fraser streets. People in the area may expect some noise and traffic congestion. Please watch for wayfinding information and follow instructions from traffic control personnel and all signs. Water to neighbouring businesses will be temporarily shut off to complete water and sanitary sewer connections. This work will be completed over a weekend to minimize the impact on businesses. **BSPC will directly contact the businesses and residents we anticipate will be affected by the water shutdown.**

*BSPC will update this notification as additional dates and times for the utility relocation and water shutdowns are confirmed.*



## Contact the Project



24/7 Construction  
Information Line  
1-844-815-6114



Project Information  
[broadwaysubway.ca](http://broadwaysubway.ca)  
[broadwaysubway@gov.bc.ca](mailto:broadwaysubway@gov.bc.ca)



Work on the Project  
[bcib.ca](http://bcib.ca)  
[info@bcib.ca](mailto:info@bcib.ca)

## What to Expect



### Timing\*

- Starting as early as August 16, 2021
- Duration: approximately 8 weeks
- \* *Schedules can change without notice.*
- \* *Additional dates and times to be confirmed and will be announced as updates to this notification.*



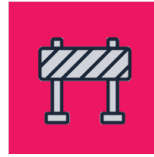
### Hours of Work\*

- Monday to Friday, 7 a.m. to 5 p.m.
- May include night work for the water shutoff: 8 p.m. to 5 a.m.
- \* *Schedules can change without notice.*
- \* *Additional dates and times to be confirmed.*



### Traffic

- Access to East 1<sup>st</sup> Avenue from Carolina Street will be closed.
- Access to East 1<sup>st</sup> Avenue will be available from Fraser Street and Foley Street.
- Flaggers and signs will assist pedestrians and cyclists navigate.



### Impacts/Interruptions

- Access for businesses and residences will be maintained.
- People travelling or living in the area may notice an increase in construction vehicles.
- Expect noise from the excavation process during utility works.
- There may be some temporary sidewalk closures and street parking unavailable.
- The utility relocation will require a short-term water shut off. Impacted stakeholders will be contacted in advance of work being performed.

### Other important information:

- Access for all abilities will be maintained to residences, businesses and services.
- Emergency access is maintained at all times.
- When possible, crews will perform the noisiest construction activities during the day to reduce overnight noise.

We know that construction can be disruptive, and we are working hard to minimize impacts in your neighbourhood and on your property. We will continue to keep you informed in advance of any local work now and in the future to help you plan accordingly. Thank you in advance for your patience.

Updates will be provided at [broadwaysubway.ca/construction](https://broadwaysubway.ca/construction), and the location of the work can be viewed on a map at: [broadwaysubway.ca/construction/maps/](https://broadwaysubway.ca/construction/maps/). Updates will also be emailed to local registered contacts, and additional notification will be provided where possible. Please note, construction schedules can change on short notice.

Broadway Subway Project Corporation is committed to safety and COVID-19 Protocols while construction activities are underway and continues to follow the latest guidance from the Provincial Health Officer and WorkSafeBC.

## Contact the Project



24/7 Construction  
Information Line  
1-844-815-6114



Project Information  
[broadwaysubway.ca](https://broadwaysubway.ca)  
[broadwaysubway@gov.bc.ca](mailto:broadwaysubway@gov.bc.ca)



Work on the Project  
[bcib.ca](https://bcib.ca)  
[info@bcib.ca](mailto:info@bcib.ca)