



# Broadway is Open

## Overview of Construction, Traffic Flow and Access

Great Northern Way–Emily Carr  
Station Area

Fall 2021

[broadwaysubway.ca](http://broadwaysubway.ca)

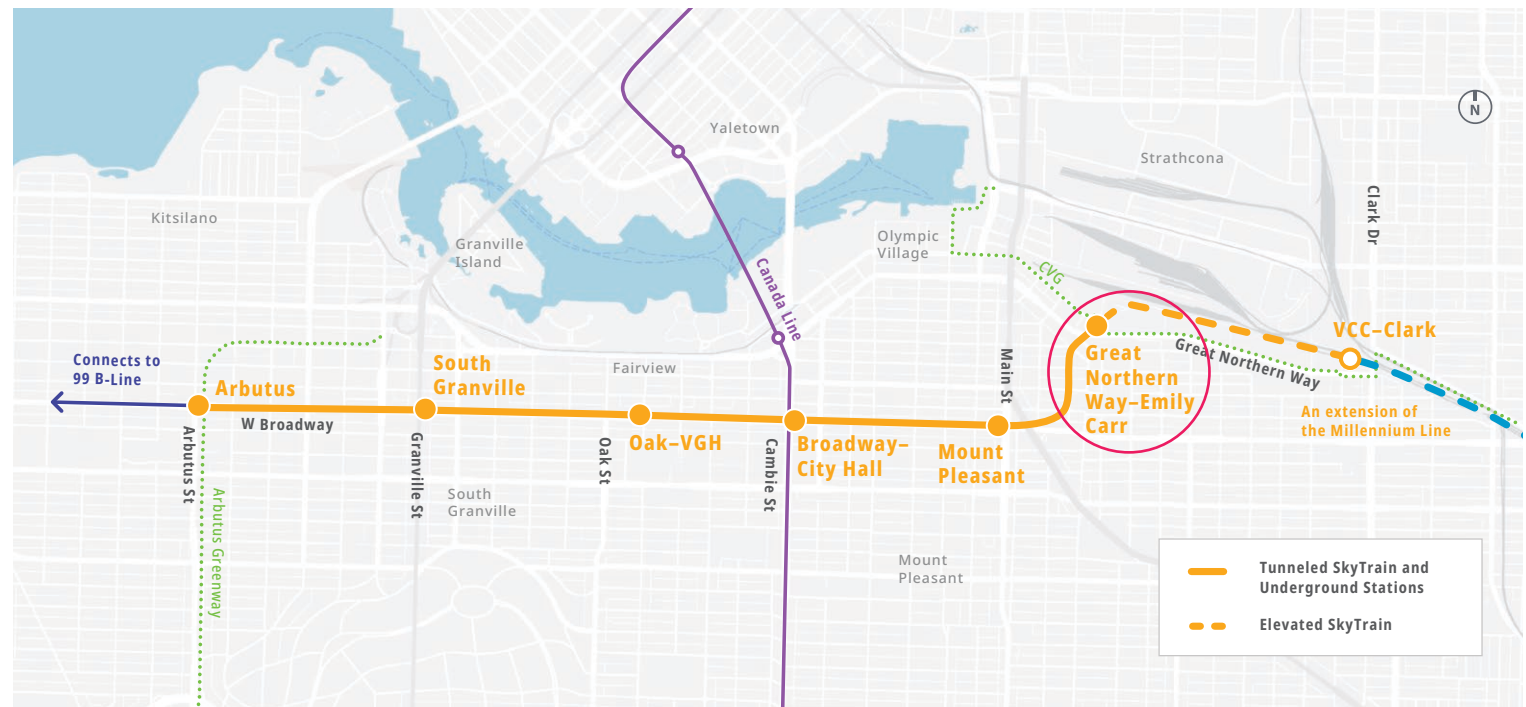


## Broadway Subway Project Overview

The Broadway Subway Project is a 5.7 km extension of the Millennium Line, from VCC-Clark Station to Broadway and Arbutus. It will provide fast, frequent and convenient SkyTrain service to B.C.'s second largest jobs centre, world-class health services, and emerging innovation and research hub, and growing residential communities.

- 700 metres will be elevated, extending from VCC-Clark Station to a tunnel portal near Great Northern Way.
- Five kilometres will be tunneled below the Broadway Corridor from Great Northern Way to Arbutus Street.
- Six underground stations will connect communities and the region, including a direct underground connection to the Canada Line at Cambie Street.
- The 99 B-Line bus service will connect from Arbutus Street to the University of British Columbia.

The project is on schedule for the new line to open in **2025.**



## Our Commitments to You



### Safety

Keep the public and our crews on and adjacent to our worksites safe



### Mobility

Keep pedestrians, cyclists, buses, vehicles, and emergency vehicles moving along Broadway



### Access

Ensure all-ability access to businesses, residences, educational institutions and health services across the alignment



### Engagement

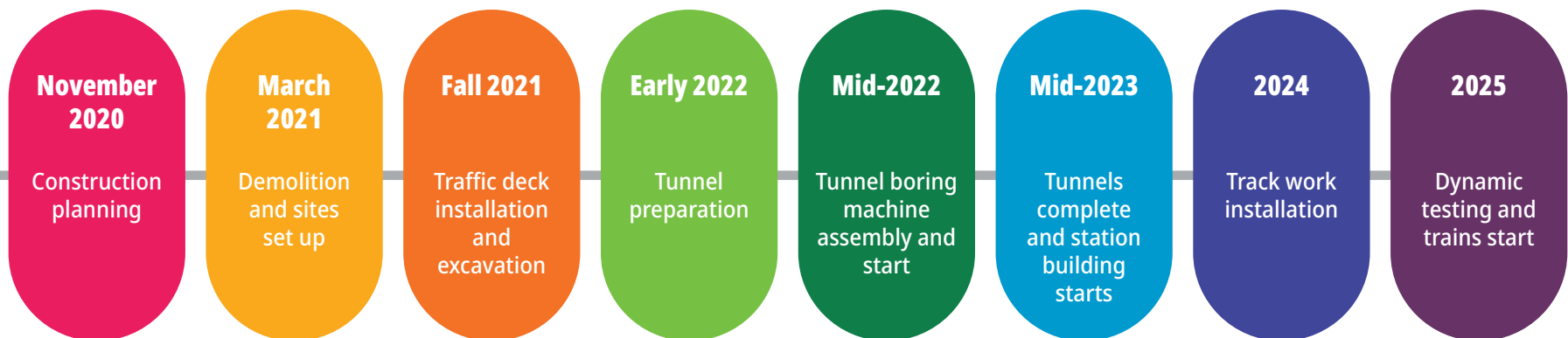
Communicate transparently, clearly and consistently in advance of construction activities with the public, residents, businesses and stakeholders



### Mitigate impacts

Minimize traffic and construction impacts wherever possible and manage the transmission of dirt, dust, light, noise and vibration

## Project Construction Schedule (subject to change)



### Construction Phasing

Construction began first at Great Northern Way–Emily Carr station to the east, then moved west to the other stations. There will be periods when all stations are under construction simultaneously.

## Great Northern Way–Emily Carr Station

The station entrance will be located on the east side of Thornton Street, just north of Great Northern Way.

Once complete, it will facilitate access to the Great Northern Way Campus area, including:

- Emily Carr University of Art and Design
- Centre for Digital Media
- Emerging creative economy hub in the False Creek Flats
- Local residences



# Getting Around Broadway—Traffic, Parking and Access

## Traffic

Traffic will continue to flow while work continues underground by using innovative traffic decking to cover excavations at future station locations.

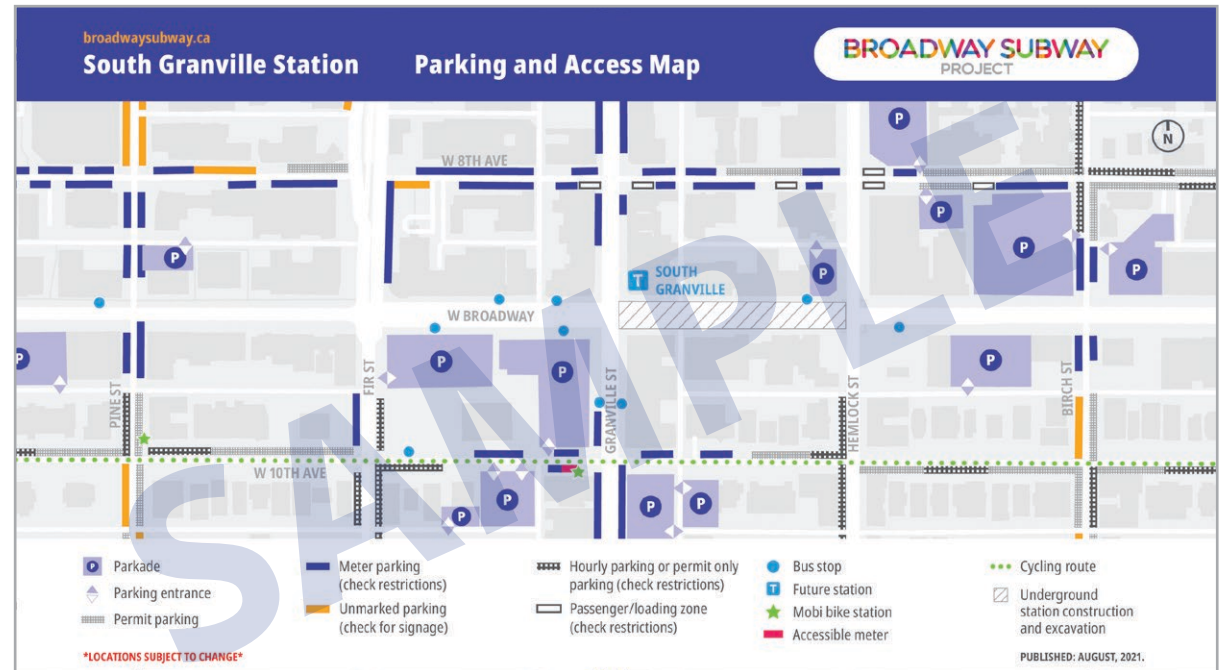
Between station blocks, parking lanes on each side of Broadway will become a priority lane for buses and emergency vehicles.

Along Great-Northern Way, the majority of street parking will remain accessible throughout construction.

## Parking and Access Map

In collaboration with key partners, the Broadway Subway Project has developed parking and access maps for the station areas along the Broadway corridor. Listed locations, including bus stops, are subject to change.

Maps will be regularly updated and available at [broadwaysubway.ca/construction/maps/](https://broadwaysubway.ca/construction/maps/)



# Getting Around Broadway—Pedestrians, Cyclists and Transit

## Pedestrian and Cyclist Access

Here are some of the ways we are ensuring that pedestrians and cyclists can continue to move through the Broadway Corridor.

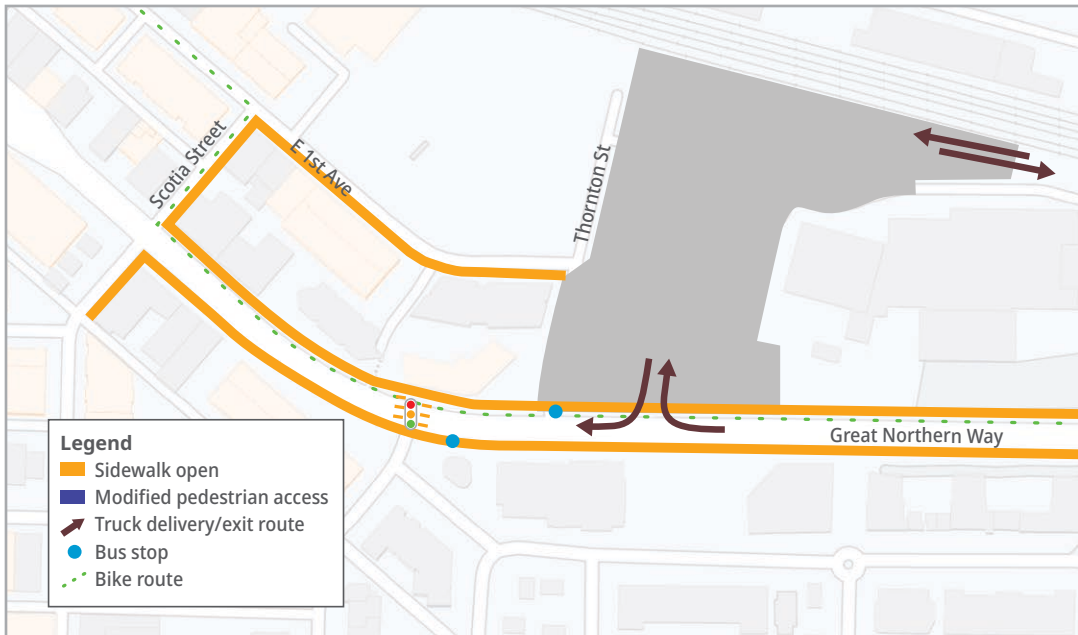
- Sidewalks and cross-walks along Great Northern Way will be maintained
- Flaggers will help pedestrians and cyclists safely cross when trucks are moving to and from the site
- Cycling routes will be maintained on Great Northern Way
- The Central Valley Greenway cycling route is detoured around the site, connecting from 1st Ave to Great Northern Way at Scotia Street

## Transit Access

Buses on Great Northern Way will continue to run throughout construction.

### Know before you go

You can check [translink.ca/trip-planner/](https://translink.ca/trip-planner/) for up-to-date information before your trip



## Truck Traffic

Soil removal will account for the majority of truck traffic to and from this site, and will use the back access on E 1st Ave. The Great Northern Way access point will be used for less frequent traffic, such as deliveries.

# Construction Activities Overview—Connection to Millennium Line

## Elevated Guideway

Construction at the Great Northern Way–Emily Carr location includes connecting the Broadway Subway extension to the Millennium Line at VCC-Clark Station. The elevated guideway will be extended 700 metres, where it will descend to ground-level before transitioning to the underground section of the project.

This elevated guideway will look similar to other elevated SkyTrain tracks.

## Piling:

**Fall 2021–Spring 2022**

- Piling will begin in the middle of the elevated guideway, and continue east and west simultaneously

## Construction of columns/piers:

**Winter 2021–Summer 2022**

- Concrete columns will be poured and joined to the superstructure of the guideway

## Girder construction:

**Summer 2022–Fall 2022**

- Girders will be installed onto the piers/columns

## Deck construction:

**Fall 2022–Summer 2023**

- The skytrain structure will be complete with a deck, parapet and handrail placements



# Construction Activities Overview—What's Happening Above Ground

## Site preparation:

Spring 2021–Summer 2022

- Preparation of the construction area including excavation, shoring and base slab construction to prepare the site for commencement of tunneling

## Tunneling operations:

Summer 2022–Fall 2023

- The TBM is expected to arrive in Spring of 2022 and after assembly be launched through the Great Northern Way headwall. The Great Northern site will continuously serve the TBM operation including extraction of spoils and supply of grout/ pre-cast liners

## Station construction:

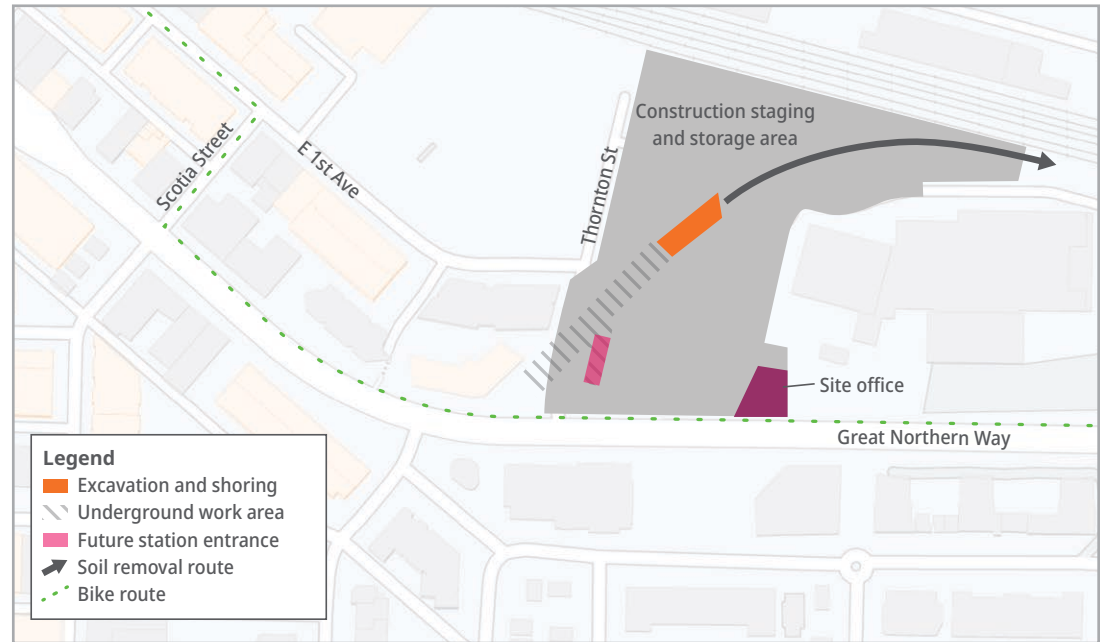
Fall 2022–Spring 2024

- Once TBM operations are underway, the station structure, associated transition box and U-channel section will be constructed
- When complete, the station and transition tunnel structure will be backfilled with above grade pavement and sidewalks restored

## Station fit out:

Spring 2023–Fall 2024

- Upon completion of structural areas construction crews will begin fitting out the station with systems and interior finishings



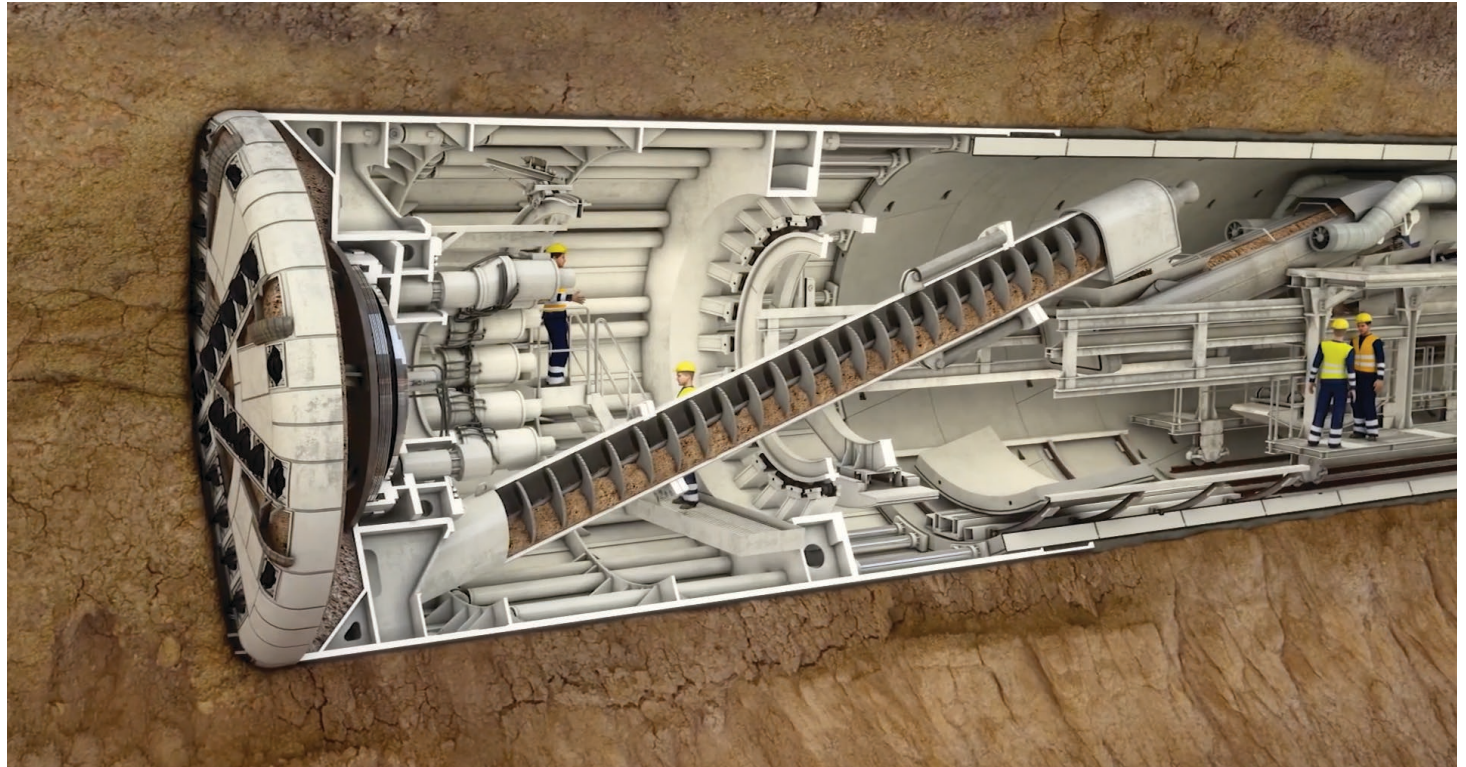
# Construction Activities Timeline—What's Happening Below Ground

## **Tunnel Boring:** **Summer 2022-2023**

### **Tunnel Boring Machines**

Two TBMs will be used to build the eastbound and westbound train tunnels at the same time. Both machines will enter the ground just west of Great Northern Way-Emily Carr Station in summer 2022.

These machines grind up earth and stabilize the tunnels with concrete panels as they move along. Earth from the tunnels will be removed at Great Northern Way.



# Construction Activities Timeline—What's Happening Below Ground

## Train Track Construction: 2024



- Underground track construction works will begin

## Train Testing: 2025



- Trains and associated systems will be tested/operated along the constructed alignment to ensure the system is safe and functional

## Timely and Regular Communication

The Project will maximize predictability and manage disruption as much as possible through:

- Timely information about construction, traffic and parking
- Notifications by email, newsletter, website and direct contact
- Clear signage at point of construction activities
- Where possible, mitigating construction impacts and manage issues as they arise
- Communicating transparently, clearly and consistently in advance of construction activities with the public, residents, businesses and stakeholders

## Mitigation Measures

The Project is taking care to mitigate the impacts of construction activities on neighbourhoods, businesses and the public along Broadway.

### Vibration Management

The Project will adhere to guidelines related to vibration and will monitor vibration levels.

Activities for which you may expect some vibration include:

- Demolition of structures and pavement
- Shoring works for future station and tunnel
- Tunnel boring
- Building the traffic deck

### Dust Control

The Project will work to manage dust dispersion during construction with plans to implement the following mitigation measures:

- Water spray to reduce generation of dust during dry seasons
- Sweep and clean paved surfaces to minimize build-up of sand and dirt

### Noise Management

When possible, efforts will be made to carry out construction activities that generate the most noise during core hours.

Night work—from 8p.m. to 5a.m.—will be required for some activities.

### Light Management

Overnight lighting may be required at construction sites. The Project will manage light pollution by implementing the following mitigation measures:

- Task-specific lighting will be used, large area lighting will be minimized
- Physical barriers (temporary sound walls and site hoardings) will limit light spills
- Existing street lighting conditions will be maintained for traffic

## Connect With Us

---



Subscribe to receive project updates:  
**broadwaysubway.ca**



Email: **broadwaysubway@gov.bc.ca**



Call: 24/7 phone line **1-844-815-6114**



Community Office: **1212 West Broadway**  
**778-572-3544**



**@broadwaysubway**



**@broadwaysubway\_**