



transportation
investment
corporation

Monthly Status Report

Reporting Period: July 2022

1. Introduction

1.1 Project Overview

The Broadway Subway Project (“BSP” or “the Project”) is a 5.7-kilometre Advanced Light Rapid Transit (ALRT or SkyTrain) extension to the existing Millennium Line SkyTrain system from its current terminus at VCC-Clark Station to a new western terminus station at Arbutus Street and West Broadway. The Project scope includes:

- 700 m of elevated guideway extending west from the existing VCC-Clark Station
- 5 km of underground tunnel
- 6 new underground stations:
 - Great Northern Way – Emily Carr Station;
 - Mount Pleasant Station;
 - Broadway – City Hall Station – designed to integrate with the Canada Line Broadway-City Hall Station;
 - Oak – VGH Station;
 - South Granville Station;
 - Arbutus Station – designed to allow for a future phase of investment to connect rapid transit to UBC.

The Broadway Subway is scheduled to open in 2025.

Additional information and updates about the Project can be found on the Project’s website at <https://www.broadwaysubway.ca/>.

1.2 Project Delivery

Transportation Investment Corporation, a provincial Crown corporation, is delivering and overseeing this \$2.827 billion Project. The Project is being delivered under B.C.’s Community Benefits Agreement and the skilled trades workforce will be provided by B.C. Infrastructure Benefits Inc.

Broadway Subway Project Corporation (BSPC) has been selected as the design-build contractor.

The Broadway Subway Project is a key part of the rapid transit program in Metro Vancouver’s Mayors’ Council 10-Year Vision. The Vision is funded by the governments of B.C. and Canada, TransLink, and City of Vancouver. Once constructed, the Broadway Subway will be integrated with the regional transit network and operated and maintained by TransLink.

1.3 Project Goals

Based on the mandate and results of consultation, seven primary goals have been identified for the Project:

- **Transportation:** Fast, reliable, and efficient service that meets current and future capacity needs and integrates with the regional transit network and other modes of transportation.
- **Financial:** Affordable and cost-effective.
- **Environment:** Attracts new riders and reduces vehicle kilometres travelled.
- **Urban Development:** Supports current and future land use development along the Broadway Corridor and integrates with the surrounding neighbourhoods through high-quality urban design.
- **Economic Development:** Creates jobs and facilitates the efficient movement of goods and services during operation.
- **Social and Community:** Safe, secure, and accessible service that improves access to rapid transit for all, while managing impacts on heritage and archaeology.
- **Deliverability:** Constructible and operable.

2. Project Dashboard

		Objectives	Project Status	Comments
Project Delivery	Scope	Project delivered within the approved scope.	●	<ul style="list-style-type: none"> The delivery is within scope. The Project includes the delivery of a primarily tunneled extension to the existing Millennium Line SkyTrain system from VCC-Clark Station to a new station at Arbutus Street and is on track.
	Schedule	Project delivered within the approved schedule.	●	<ul style="list-style-type: none"> The start of piling activities was delayed at some construction locations. Recovery measures have been implemented by Broadway Subway Project Corporation and is being monitored closely. The completion of the base slab at GNW was delayed due to the concrete supplier strike. The Project is closely monitoring the impacts of the concrete strike on the entire project.
	Budget	Project delivered within the approved budget of \$2.827 billion.	●	<ul style="list-style-type: none"> The Project spending for the month of July 2022 was \$28.2 million and total Project spending to date is \$820.1 million. Total Federal Recoveries to date are \$243.2 million and City of Vancouver contribution is \$100.3 million. The Project is forecast to be delivered within budget.
	Safety	Take every reasonable step to ensure that work is performed safely and in compliance with all applicable safety regulations, and in accordance with government policy.	●	<ul style="list-style-type: none"> The health and safety management program is being monitored. Regular Project site visits are being performed to oversee health and safety performance. Monitored conformance to COVID-19 safety requirements. There has been two (2) lost time injuries for the Project. The Lost Time Injury Frequency Rate (LTIFR) for the Project is 0.32. The average injury rate in 2020 was 1.7 per WorkSafeBC.
	Quality	Implement and maintain an effective Quality Management System.	●	<ul style="list-style-type: none"> Quality monitoring and auditing of select work activities and processes continues. Review of quality documents submittals, as they are received, continues.
	Environmental	Ensure work is performed in an environmentally responsible manner.	●	<ul style="list-style-type: none"> Site specific environmental workplans are being followed. Weekly environmental monitoring reports are being submitted. Ongoing work to update contaminated site management plans for all stations. Ongoing monthly Province led audits of environmental program.
	Design and Construction	Provide design and technical oversight, coordinate and manage activities on site, and conduct compliance reviews.	●	<ul style="list-style-type: none"> Continued progress on excavation, piling, utility work and traffic decking. Permanent works being constructed along the Elevated Guideway and at Great Northern Way Station.
	Community Benefits	Work collaboratively with BC Infrastructure Benefits Inc. (BCIB) to	●	<ul style="list-style-type: none"> Ongoing coordination with BCIB on permitting and future BCIB resource requirements.

		successfully implement the Community Benefits Agreement (CBA).		
Partners / Stakeholders	Indigenous Groups	Continue to build and maintain a positive collaborative working relationship.	●	<ul style="list-style-type: none"> Continued engagement with Indigenous Groups in relation to the Project and cultural recognition. Continued Project-specific agreement discussions with Indigenous Groups.
	Third Parties	Continue to build and maintain positive relationships with Project Partners and other third parties.	●	<ul style="list-style-type: none"> Ongoing third-party engagement for successful implementation.
	Public and Stakeholder Engagement	Continue to build and maintain positive relationships with the community and other stakeholders.	●	<ul style="list-style-type: none"> Continued engagement with local businesses, stakeholders, residents, and the public.

Status	Description
●	Managing critical issues, negotiating resolution; action required immediately
●	Managing some issues, negotiating resolution; action required in the near term
●	On track; no action required

3. Project Documents and Achievements to Date

Project Delivery	Project Planning and Development	<ul style="list-style-type: none"> Business Case released (2018). Cost Report released (2018). Project Overview released (2018). Risk Report released (2018). Strategic Options Whitepaper released (2018). Executed Design-Build-Finance Agreement (August 2020).
	Environmental	<ul style="list-style-type: none"> Environmental technical studies complete (2017-2018). Environmental Socio-Economic Report complete (2020). BSPC Construction Environmental Management Plan finalized (2021). Environmental Workplans complete (2021). First annual environmental report submitted (2021).
	Design and Construction	<ul style="list-style-type: none"> Geotechnical studies complete (2016-2017). Reference concept design complete (2018).

		<ul style="list-style-type: none"> • Traffic modelling complete (2017-2019). • Geotechnical Subsurface Baseline Report complete (2019). • Geotechnical investigations commenced (2020). • Building abatement complete (2021). • Building demolitions at station sites complete (2021). • Piling complete at Mount Pleasant Station and Broadway City Hall (2021). • Piling complete at Oak-VGH, Granville station, and south side of Arbutus station (2022). • Traffic deck installation complete on Mount Pleasant station, north side of Broadway City Hall, north side of Oak-VGH, south side of South Granville (2022). • Excavation at Great Northern Way complete. (2022)
	Province/Other Works	<ul style="list-style-type: none"> • Tunnel Boring Machine (TBM) power – BC Hydro (2019). • Propulsion Power Substations including upgrade to dedicated power at VCC-Clark Station – BC Hydro (2019). • Utility relocate at Main Street – TELUS (2019). • Utility relocate at Great Northern Way – TELUS/FortisBC/BC Hydro (2019). • Civil construction and utility relocate at Arbutus and Cambie – TELUS (2020). • Trolley overhead relocations of bus routes 14, 16, and 17 – Coast Mountain Bus Company (2020). • Trolley overhead removals of trolley infrastructure on Broadway – Coast Mountain Bus Company (2020). • Utility relocate at Cambie – FortisBC (2020). • Electrical duct utility relocate at South Granville and Arbutus – City of Vancouver (2021). • 901 Great Northern Way building modification completed (2021).
	Community Benefits	<ul style="list-style-type: none"> • BCIB Contractor and BCIB Subcontractor Agreements in the RFP (2019). • Received BSP appendix to CBA (2019/2020). • Execution of the BCIB Contractor Agreement (2020). • Granted subcontractor permits (2020-2021).

		<ul style="list-style-type: none"> BCIB labour supply ongoing for the Project (2022).
Partners / Stakeholders	Third Parties	<ul style="list-style-type: none"> Memorandum of Understanding – City of Vancouver (2017). Memorandum of Understanding – TransLink (2018). Canada Line Amending Agreement – InTransit BC Phase 1 (2019). South Granville Station Integration Agreement – PCI (2019). Vancouver Municipal Agreement – City of Vancouver (2020). Metro Vancouver Accommodation Agreement (2020). Broadway Subway Project Support Agreement – TransLink (2020). Canada Line Amending Agreement – InTransit BC Phase 2 (2020). Integration Agreement – TransLink (2020). Great Northern Way Station Integration Agreement – PCI (2020).
	Indigenous Groups	<ul style="list-style-type: none"> Capacity Agreement for the Environmental and Socio-Economic Review (2018). Contracting and employment requirements finalized (2020). Cultural recognition opportunities selected by Indigenous Groups (2021).
	Public and Stakeholder Engagement	<ul style="list-style-type: none"> Phase 1 and 2 engagements (led by TransLink and City of Vancouver) <ul style="list-style-type: none"> Phase 1 engagement (December 2016 – February 2017). Phase 2 engagement (May 2017 – July 2017). Broadway Subway Project Engagement (Province-led) <ul style="list-style-type: none"> Local business survey (July 2019 – December 2019). Community engagement (October 2019 – December 2019). Opened Community Office (Fall 2019). Established 24/7 construction information line (December 2019). Station Design Advisory Process (BSPC-led) <ul style="list-style-type: none"> First engagement occurred (November-December 2020).

		<ul style="list-style-type: none">○ First engagement summary report released (2021).○ Second engagement (April 29-May 12, 2021).
--	--	---

4. July Highlights and Three Month Lookahead

4.1 Safety

Scope:	<ul style="list-style-type: none">• Oversee and monitor health and safety:<ul style="list-style-type: none">○ Management plans and systems.○ Goals, objectives, and performance metrics.○ Roles and responsibilities.○ Planning and coordination of major Project activities.○ Compliance with WorkSafeBC, municipalities, and government agencies.○ Continual improvement process.○ Risk management.○ Statistics and trends.
Monthly Highlights:	<ul style="list-style-type: none">• Performed weekly site visits to observe compliance and areas of improvement.• Focused on monitoring the management of public safety.• Reviewed mined tunnel health and safety plans and procedures.• Received the reported Lost Time Injury Frequency Rate (LTIFR):<ul style="list-style-type: none">○ The Project to date LTIFR is 0.32, which is less than the 2020 WorkSafe BC average of 1.7, as compared to similar projects.
Three Month Lookahead:	<ul style="list-style-type: none">• Monitor changes to COVID-19 safety requirements.• Provide health and safety support to involved parties.• Perform regular health and safety inspections at Project sites.• Oversee the health and safety performance and compliance of the mined tunnel.• Monitor the management of public safety.

4.2 Quality

Scope:	<ul style="list-style-type: none">• Establish quality management Project objectives and performance measures.• Manage Project quality management activities.• Monitor relevant quality management performance metrics.• Outline relevant quality management processes and activities.
Monthly Highlights:	<ul style="list-style-type: none">• BSPC conducted quality audits on construction, traffic, design, systems management processes, and on several of their subcontractors' work activities.• The Province conducted surveillance quality audits on processes related to BSPC's elevated guideway caissons works and interface management of systems processes.• Seventeen (17) new nonconformities were initiated this month. These generally related to traffic, structural, environmental, electrical, surveying, quality, utilities, and construction issues.
Three Month Lookahead:	<ul style="list-style-type: none">• Continue scheduled quality system audits and surveillances.• Continue to review quality documentation submissions.

4.3 Environmental

Scope:	<ul style="list-style-type: none"> Oversee delivery of measures to manage risk identified in the Environmental and Socio-Economic Review (ESR). Review environmental submissions including the Construction Environmental Management Plan (CEMP) and Environmental Work Plans (EWPs). Monitor CEMP implementation through review of weekly environmental monitoring. Support engagement with Indigenous Groups on CEMP implementation.
Monthly Highlights:	<ul style="list-style-type: none"> Continued work to confirm volumes of contaminated soil requiring disposal. Ongoing weekly/monthly reporting to support implementation of Construction Environmental Management Plan. Advanced City of Vancouver water management approvals and federal Disposal at Sea permits. Continued enhanced focus on monitoring and mitigation of construction noise.
Three Month Lookahead:	<ul style="list-style-type: none"> Increase on-site environmental surveillance during construction to bi-monthly. Finalize volumes of contaminated soils from station locations. Continue enhanced focus on noise monitoring and mitigation to support extended hours of construction.

4.4 Design and Construction

Scope:	<ul style="list-style-type: none"> Provide technical input to the procurement processes. Develop a design concept, technical requirements/specifications, and related technical studies for the Project. Conduct Project related traffic operations modelling, data collection, and other related engineering services. Conduct compliance reviews of work by BSPC. BSPC Design and Construction Activities include: <ul style="list-style-type: none"> Non-Systems Design Systems Design Enabling Works including site preparation, building demolitions and utility relocations Construction of 6 Stations Elevated Guideway Construction Underground Guideway Construction by tunnel boring machine Systems Installation Testing and Commissioning
Monthly Highlights:	<ul style="list-style-type: none"> Continued Non-Systems and Systems Design. Continued to implement numerous traffic diversions throughout the corridor to accommodate construction. Only remaining piling for traffic decks is on the North side of Arbutus. Utility work continued throughout the corridor. Continued caisson drilling at the elevated guideway. Commenced column construction along the elevated guideway.

	<ul style="list-style-type: none"> • Utility relocation at Carolina Street close to complete. • Ongoing excavation at Mt. Pleasant station. • Continued slab construction at Great Northern Way (GNW) Station. • Commenced mining on the Inbound (IB) tunnel. • Continued mobilization of the TBM on Outbound (OB) tunnel. • Commenced piling in transition box. • Ongoing excavation at Broadway City Hall station and cross-over. • Ongoing excavation at Oak-VGH station. • Ongoing excavation at South Granville station. • Ongoing shallow excavation at south side of Arbutus station. • Continued tunnel liner segment creation.
Three Month Lookahead:	<ul style="list-style-type: none"> • Continue Non-Systems and Systems Design. <p><u>Elevated Guideway:</u></p> <ul style="list-style-type: none"> • Continue caisson installation for guideway columns and bents. • Continue column construction. • Begin bent construction. • Modify QLT parking lot to construct guideway foundations and columns within the footprint of the parking lot. <p><u>Great Northern Way – Emily Carr:</u></p> <ul style="list-style-type: none"> • Continue piling for transition box and begin piling for U Channel at Great Northern Way. • Continue station structure construction. • Begin wall construction at GNW station. <p><u>Mt. Pleasant:</u></p> <ul style="list-style-type: none"> • Continue bulk excavation. • Continue tower crane installation. • Begin waterproofing, rebar installation and concrete slab pours. <p><u>Broadway - City Hall:</u></p> <ul style="list-style-type: none"> • Continue excavation at Broadway City Hall station and cross-over block. • Install remaining girder and traffic decking. • Continue Metro Vancouver combined sewer installation. <p><u>Oak – VGH:</u></p> <ul style="list-style-type: none"> • Continue excavation on south side and installation of girder and traffic deck. • Continue bulk excavation. <p><u>Granville:</u></p> <ul style="list-style-type: none"> • Continue excavation on north side and installation of girder and traffic deck. • Continue bulk excavation. <p><u>Arbutus:</u></p> <ul style="list-style-type: none"> • Begin shallow excavation on south side. • Install girder and traffic deck. • Commence piling program on north side. • Excavate north side, install remaining girders, and traffic deck. • Excavate Capilano Main number 4. <p><u>Tunnel:</u></p> <ul style="list-style-type: none"> • Continue mining of Inbound track. • Launch Outbound TBM.

4.5 Indigenous Groups

Scope:	<ul style="list-style-type: none"> • Consultation and engagement with Indigenous Groups on Project materials as well as cultural recognition at stations.
Monthly Highlights:	<ul style="list-style-type: none"> • Shared Project updates and materials with Indigenous Groups, including environmental management plans and reports, archaeological reports, and construction updates. • Continued discussions with Indigenous Groups on art and cultural recognition, including calls for artists and confirmation of selected opportunities.
Three Month Lookahead:	<ul style="list-style-type: none"> • Continue sharing information, identifying and resolving issues, and identifying Project-related opportunities for Indigenous Groups. • Continue engagement with Indigenous Groups related to art and cultural recognition at stations, including supporting the selection of artists by Indigenous Groups. • Work with Indigenous Groups to identify training programs that support Project employment and update labour forecasting.

4.6 Third Parties

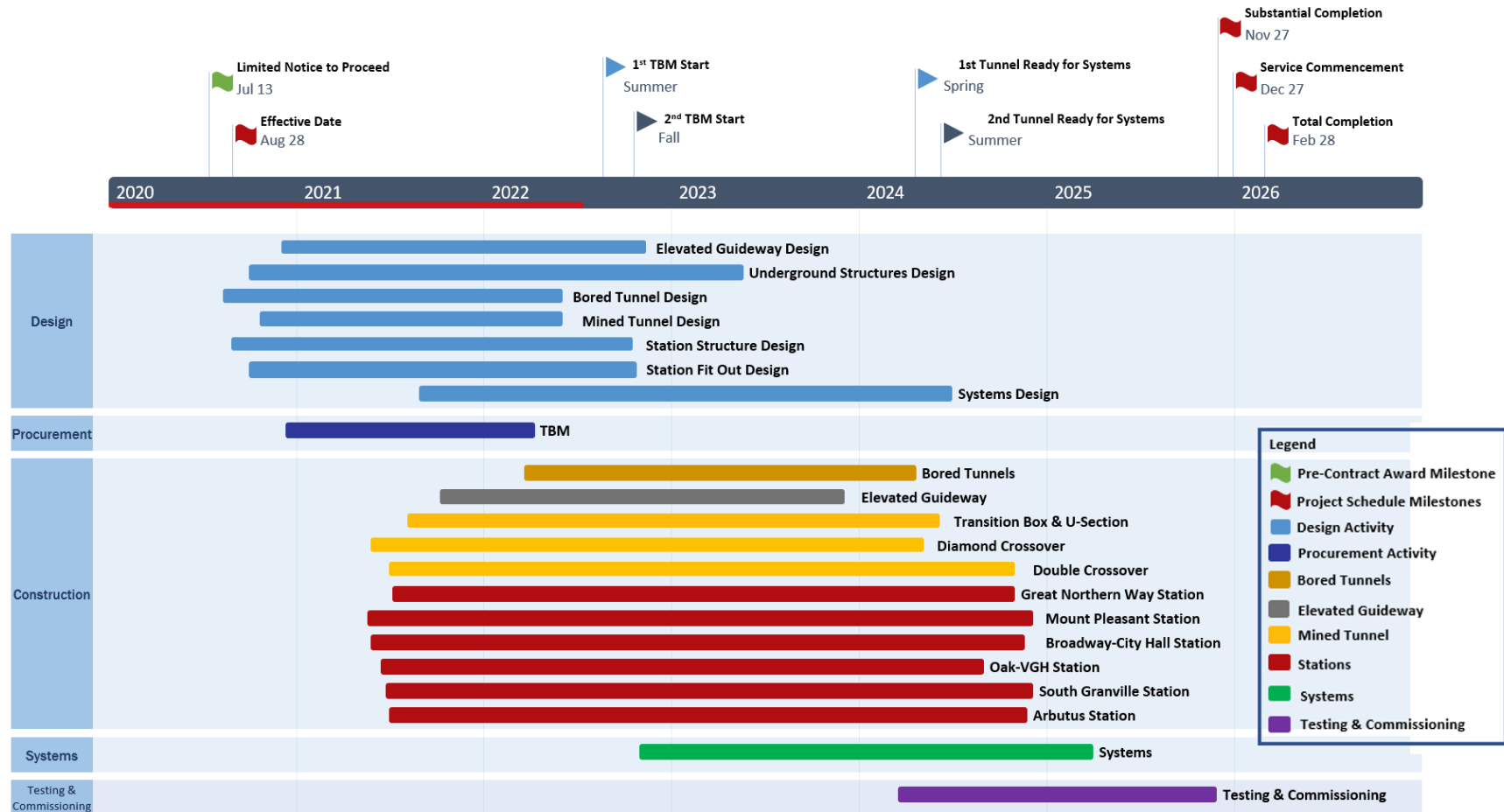
Scope:	<ul style="list-style-type: none"> • Engage with TransLink, the City of Vancouver, PCI, InTransit BC, and other third parties during the Project implementation phase. • TransLink Agreement. <ul style="list-style-type: none"> ◦ Broadway Subway Project Support Agreement. • Municipal Agreement. <ul style="list-style-type: none"> ◦ Vancouver Municipal Agreement with the City of Vancouver. • Agreements with InTransit BC and TransLink for technical integration of the new Millennium Line Broadway-City Hall Station with the existing Canada Line Broadway-City Hall Station. <ul style="list-style-type: none"> ◦ Canada Line Amending Agreement – InTransit BC Phase 1 (between TransLink and InTransit BC). ◦ Canada Line Amending Agreement - InTransit BC Phase 2 (between TransLink and InTransit BC). ◦ Integration Agreement with TransLink. • PCI Agreements. <ul style="list-style-type: none"> ◦ South Granville Station Integration Agreement with PCI. ◦ Great Northern Way Station Integration Agreement with PCI. • Accommodation Agreement with Metro Vancouver.
Monthly Highlights:	<ul style="list-style-type: none"> • Continued to engage third parties to ensure successful implementation of executed agreements.
Three Month Lookahead:	<ul style="list-style-type: none"> • Oversee implementation phase of executed agreements. • Coordinate design and construction interface between BSPP and third parties.

4.7 Public and Stakeholder Engagement

Scope:	<ul style="list-style-type: none"> • Manage ongoing public and stakeholder communications and community and business relations.
Monthly Highlights:	<ul style="list-style-type: none"> • Installed informative mural surrounding the construction viewing windows at Great Northern Way. • Set up neighbourhood pop-up kiosk at Great Northern Way and information booth at Riley Park Farmers Market. • Distributed construction notifications (available on website), responded to public and stakeholder enquiries, and met with businesses and stakeholders. • Project update newsletter emailed to 13,300K+ subscribers. • Responded to 54 public inquiries.
Three Month Lookahead:	<ul style="list-style-type: none"> • Celebrate completion of the Broadway-City Hall traffic deck. • Coordinate artwork for plywood construction hoarding. • Engage with neighbourhoods on traffic pattern changes during traffic deck construction. • Continue frequent business outreach walks given high level of construction activity. • Engage with community at pop-up information kiosks and participate in neighbourhood festivals. • Announce TBM names and celebrate start of tunnel boring. • Develop education and outreach activities and initial resources. • Provide progress updates on construction of traffic decks, elevated guideway, excavation of stations, utility relocations and preparations for tunneling. • Continue regular meetings with the Business Improvement Associations, Traffic Advisory and Arbutus Schools Traffic Liaison groups. • Continue regular meetings and correspondence with local businesses, residents and key stakeholders. • Distribute construction notifications and respond to public enquiries.

5. Schedule

The following schedule depicts the estimated deliverables, milestones, and timelines from the design to commissioning phase of the Project.



6. Project Photos



Figure 1: Elevated Guideway: Progressing with the installation of columns for the elevated guideway.



Figure 2: Great Northern Way-Emily Carr Station: Mobilizing for the mined tunnel, assembly of the Tunnel Boring Machine and progressing with the station box base slab.



Figure 3: Mount Pleasant Station: Progressing with the excavation and shoring of the station box.



Figure 4: Broadway City Hall Station: Progressing with the relocation of the large diameter Capilano #5 pipe in order to install the underground station.



Figure 5: Oak VGH Station: Progressing with the installation of the supporting structure for the traffic decking girders.



Figure 6: South Granville Station: Progressing with the excavation of the station box and installation of the supporting structure for additional traffic decking.



Figure 7: Arbutus Station: Progressing with the installation of traffic decking on Broadway between Arbutus and Cypress streets.