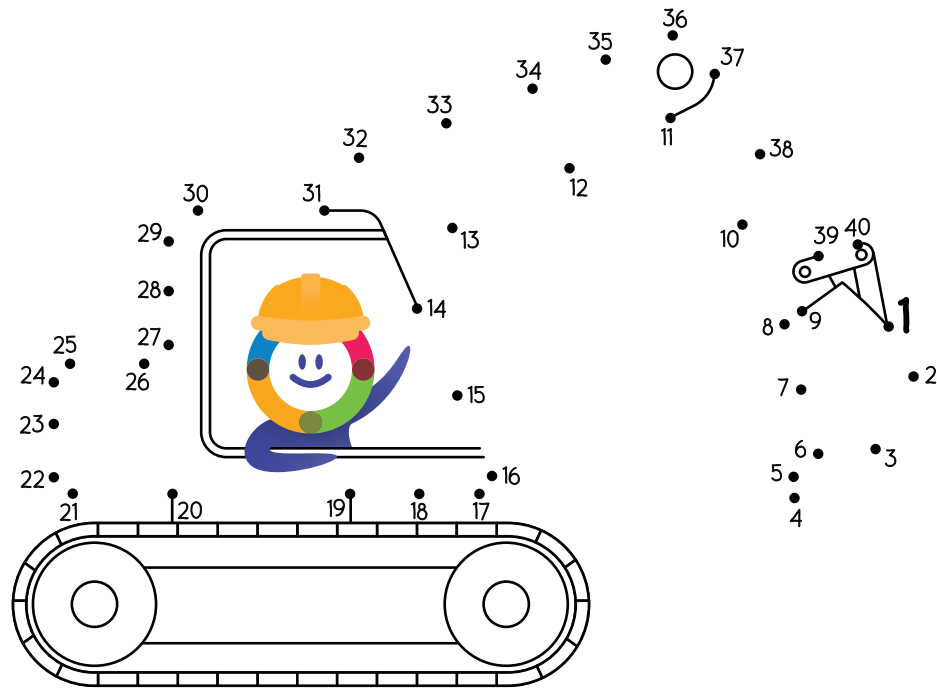


What am I?

Connect the dots to complete the picture



WORD SEARCH



T	D	K	M	E	A	S	U	R	E	D	O
R	V	B	Q	N	L	C	P	Y	Z	Q	T
K	H	A	M	M	E	R	G	H	C	H	U
M	T	C	N	C	A	U	T	I	O	N	N
T	S	K	F	C	R	L	F	J	T	N	N
R	W	H	X	L	O	A	H	C	R	S	E
Z	C	O	J	Y	S	U	N	M	E	U	L
Y	H	E	V	R	N	L	V	E	O	B	J
F	K	Q	K	T	E	T	P	E	W	W	E
D	U	M	P	T	R	U	C	K	R	A	X
E	R	M	B	R	O	A	D	W	A	Y	K
Z	E	I	H	D	P	L	I	D	A	K	G
R	W	P	L	V	I	C	X	N	E	J	E
C	Z	S	J	L	S	T	A	T	I	O	N

- BACKHOE
- BROADWAY
- CAUTION
- CRANE
- DRILL
- DUMP TRUCK
- HAMMER
- MEASURE
- STATION
- SUBWAY
- TRAIN
- TUNNEL
- VANCOUVER



Activity Book



Connect With Us

- Subscribe to receive project updates: broadwaysubway.ca
- Email: broadwaysubway@gov.bc.ca
- Call: 24/7 phone line 1-844-815-6114
- Community Office: 1212 West Broadway 778-572-3544

Did you know...
the length of the Broadway Subway extension is **5.7 km?**
That's 7,480 steps!

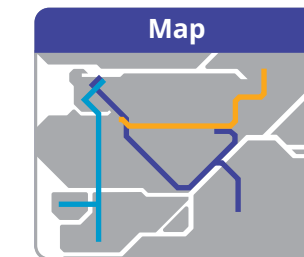
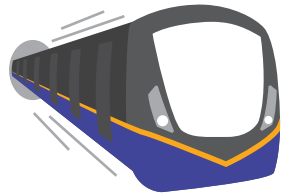
@broadwaysubway
 @broadwaysubway_

broadwaysubway.ca

Why do we ride the SkyTrain?

It's fast!

The SkyTrain doesn't get stuck in traffic or have to wait at red lights. The Broadway Subway will take you from VCC-Clark Station to Arbutus Station in only 11 minutes!



It's easy!

Right now there are 53 stations connected by trains. The Broadway Subway will add another 6. This means lots of options for getting where you need to go.

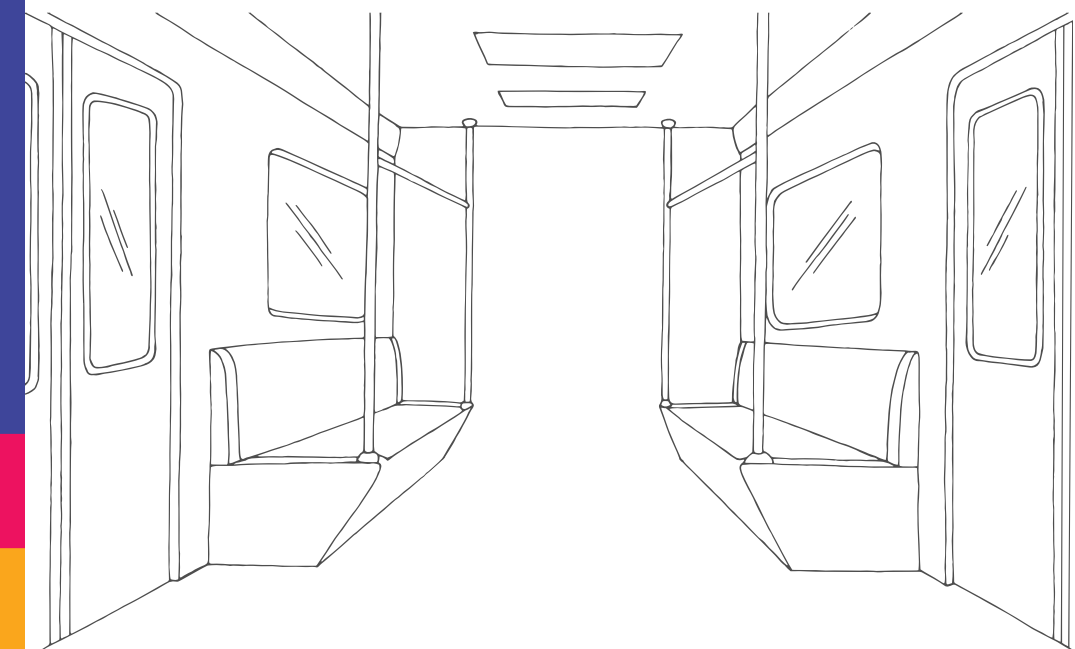
It's good for the earth!

Gas-powered vehicles like cars add pollution to the environment. The SkyTrain uses green electricity, so you can feel good about helping the earth.



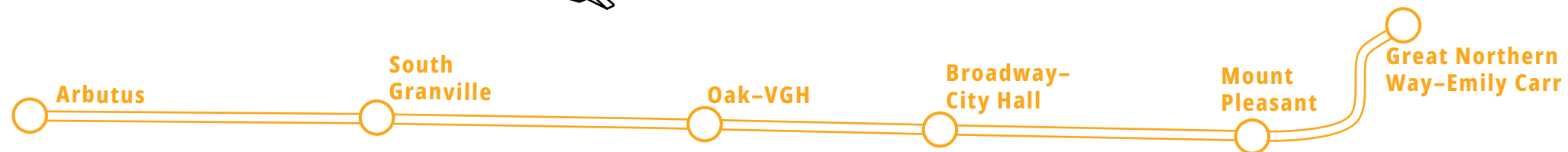
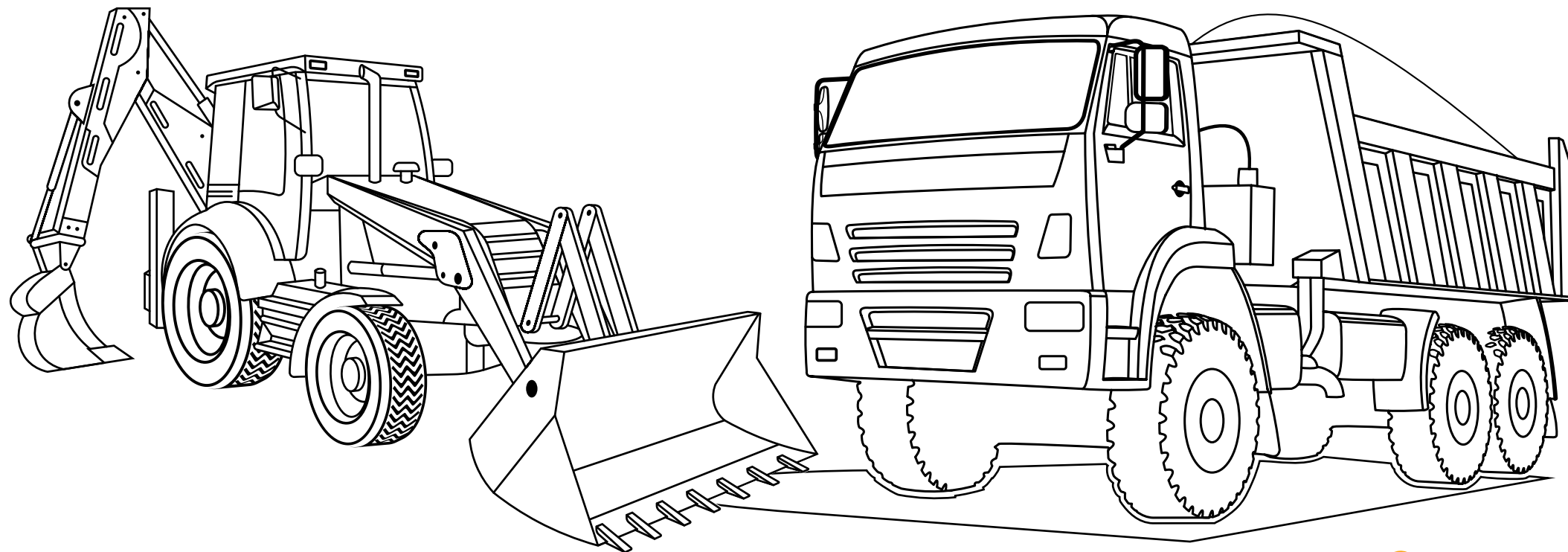
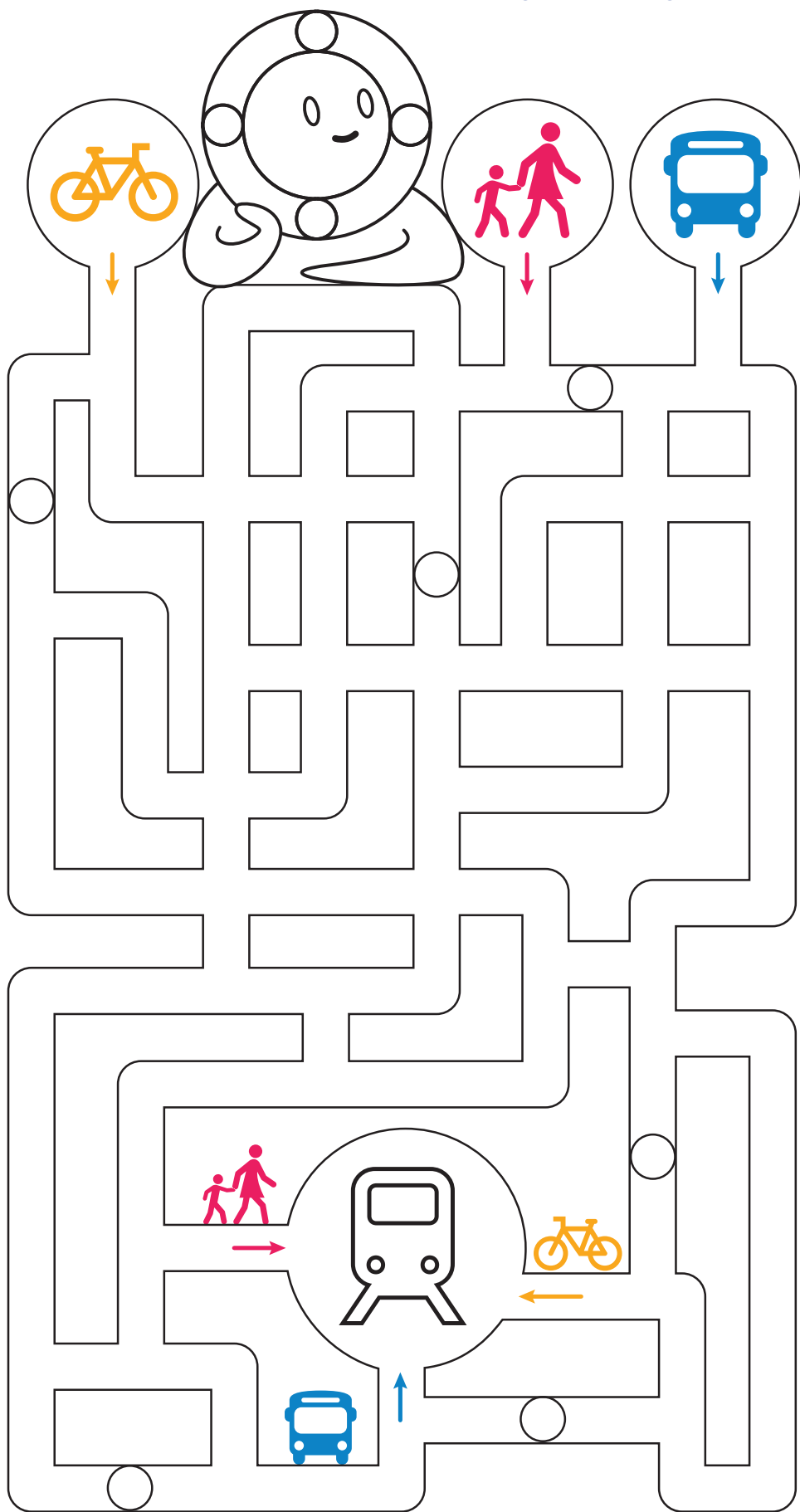
Why do you ride the SkyTrain?

Draw yourself riding the train below.



So many ways to get around!

We can ride our bikes, walk or take the bus to the Broadway Subway.



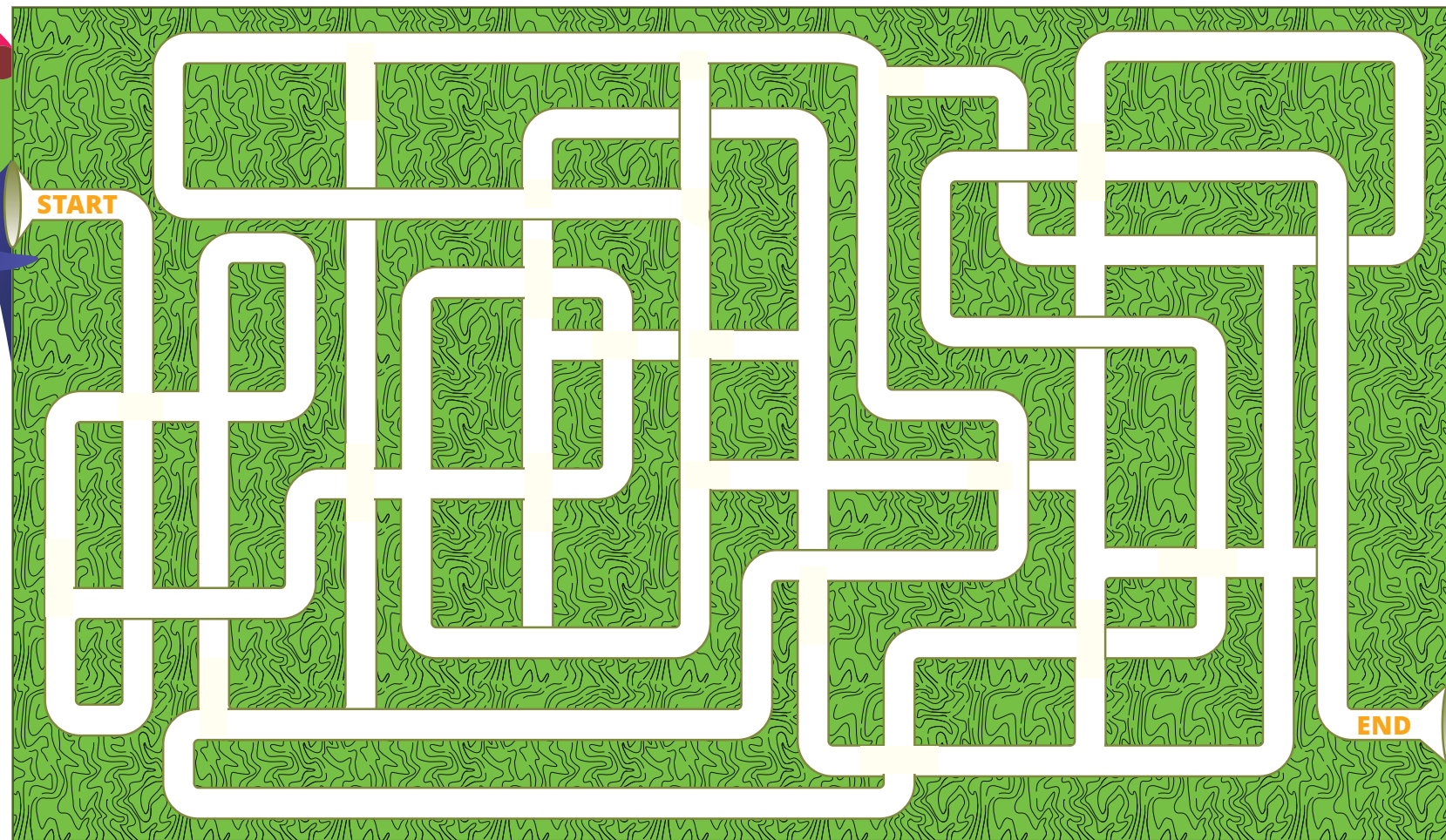
Help me dig a tunnel!

Did you know
5 kilometres
of the Broadway
Subway will be
underground...

... and the tunnel is being
dug under Broadway
right now!



START



END