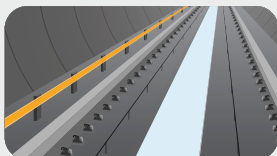


FAQ | Track Installation

? What are the parts of the SkyTrain track?

The SkyTrain runs on two parallel rails. In the middle, the **Linear Induction Motor Rail** helps move and stop the train. The power rail on the side supplies energy to operate the train.



? How much rail will be installed?

22 kilometres of rail will be installed. End to end, that is about the distance from Playland to Richmond Oval or a half marathon.

? How long is each rail segment?

Rail segments are made up of smaller rail pieces that are welded together until they reach up to about **400 metres** in length.

**1,000 welds will be made to join the rails.*

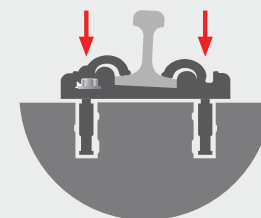
? How heavy is the rail?

The weight of all the rail used will be more the **1,260 metric tonnes**. That's as much as **59 Mark II SkyTrains**.



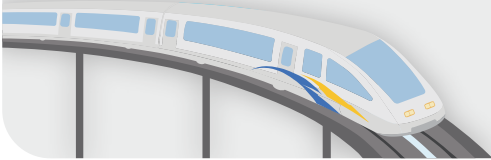
? How are the rails attached to the concrete base?

The rails are attached directly to the concrete base with specialized rail fasteners. Approximately **25,000 fasteners** will be used on the line.



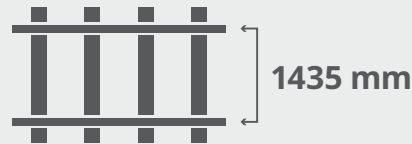
? Why does the track slant inwards around curves?

On curves, the outer rail is raised higher than the inner rail. This makes the ride **more comfortable** for passengers.



? What is the distance between two rails?

The rails are **1435 millimetres** apart. This is called standard gauge railway and it's the most widely used rail spacing in the world. It has been used since the 1800s!



? How are the rails transported on the track?

A **specialized machine** pulls the rail into the tunnel along rollers, stacks them within the tunnel, and then places them onto the fasteners when ready to install.



? Can the train switch tracks?

When in service, trains will be able to switch tracks in three places - at the elevated guideway, Broadway-City Hall and Arbutus stations. These are called **crossover sections**.

The Broadway-City Hall crossover section is called a **diamond crossover** because of its shape! Crossovers are a SkyTrain's best friend and keep the system operating smoothly.



Check it out!

Be sure to check out our viewing windows into the future Great Northern Way-Emily Carr Station, located at the intersection of Great Northern Way and Thornton Street!