



transportation
investment
corporation

Media Briefing – Rebuilding Broadway

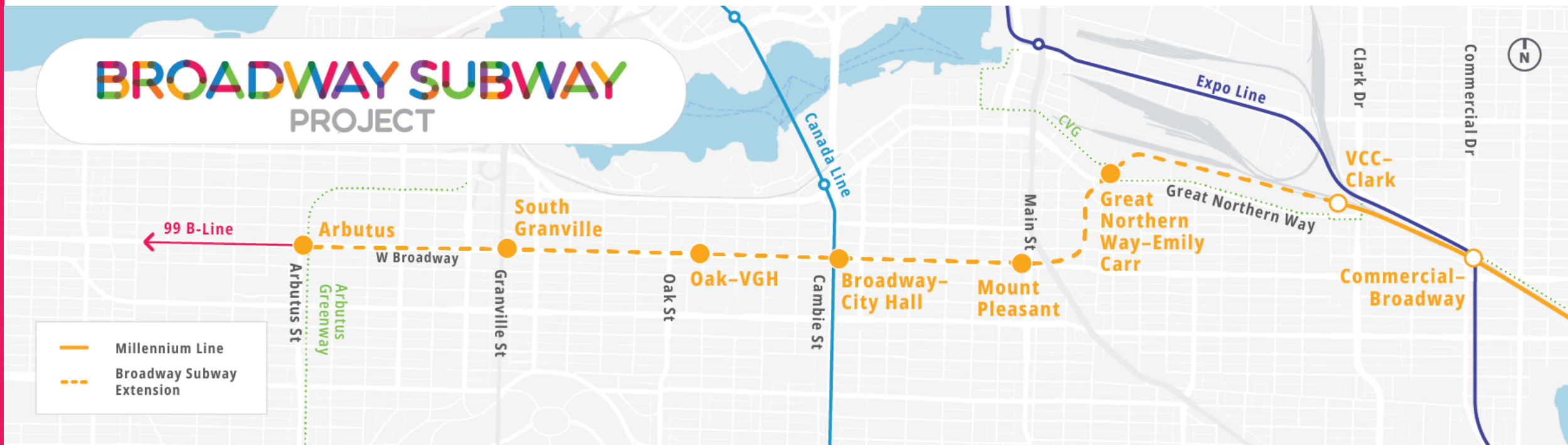
Lauren Matthias

Executive Project Director, TI Corp

Project Overview

A 5.7-kilometre extension of the Millennium Line, opening in Fall 2027

- **Travel Time Savings** – VCC-Clark to Arbutus in 11 minutes
- **Capacity** – Moves 3x more people than the 99 B-line
- **Builds the Network** – Direct underground connection to the Canada Line





Project Status

- Rail installation inside the tunnels
- Above-ground station entrance buildings taking shape
- Underground station roofs complete at 3 of 6 stations
- Ready to begin rebuilding the road above the station sites



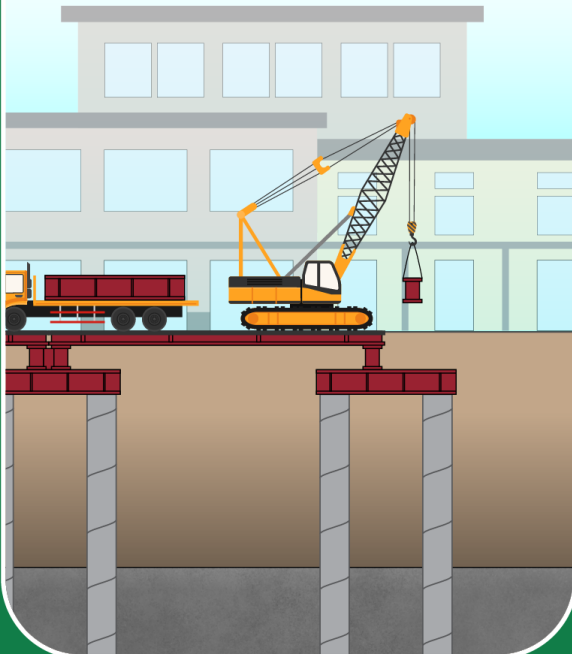
Temporary Traffic Decks

- 5 traffic decks installed over station sites
- Allowed vehicles to travel on Broadway during station construction
- Pedestrian access maintained
- Businesses are open and accessible

Next: Rebuilding Broadway

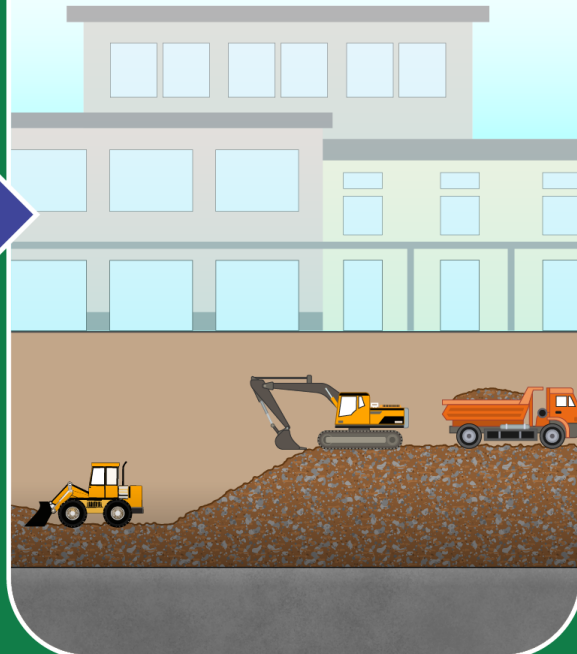
STEP 1

Remove the traffic deck



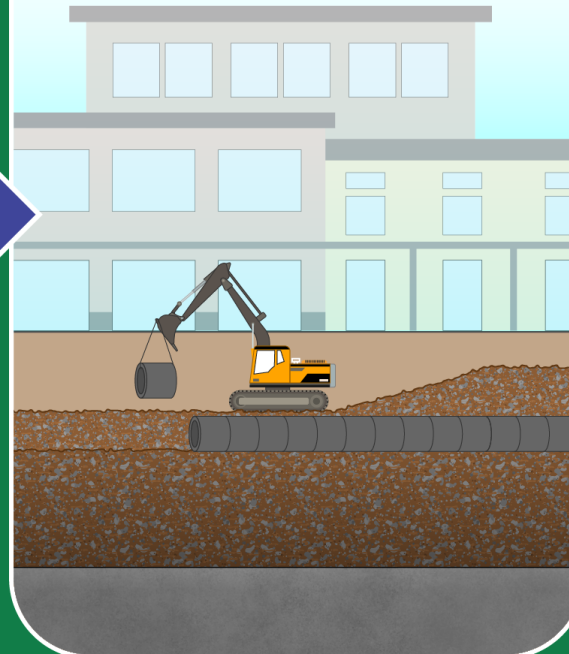
STEP 2

Cover the station with gravel



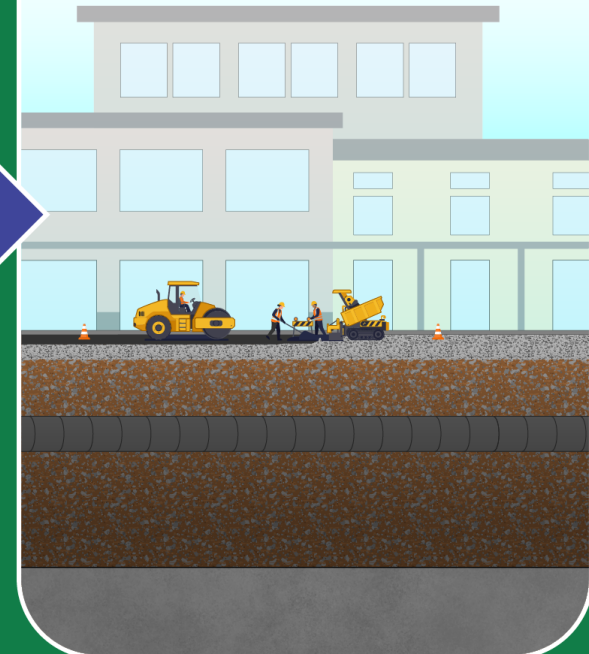
STEP 3

Install permanent utilities and add more gravel



STEP 4

Repave Broadway





Mount Pleasant Station

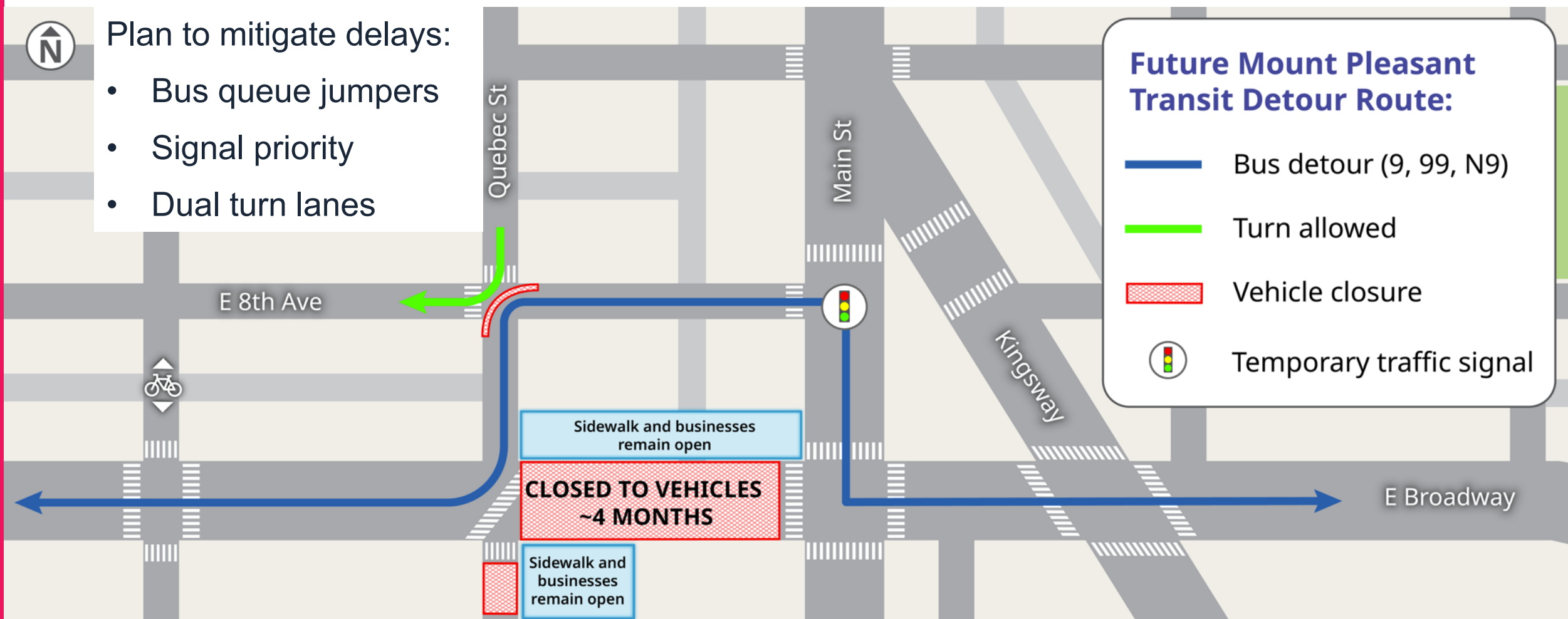
- Temporary detour off one block of Broadway for approximately 4 months
- Traffic returns to this block of Broadway but lanes reduced for another 4 months
- Current pedestrian access maintained, including access to residences and businesses

Transit Detour



Plan to mitigate delays:

- Bus queue jumpers
- Signal priority
- Dual turn lanes



Travel Tips During Construction



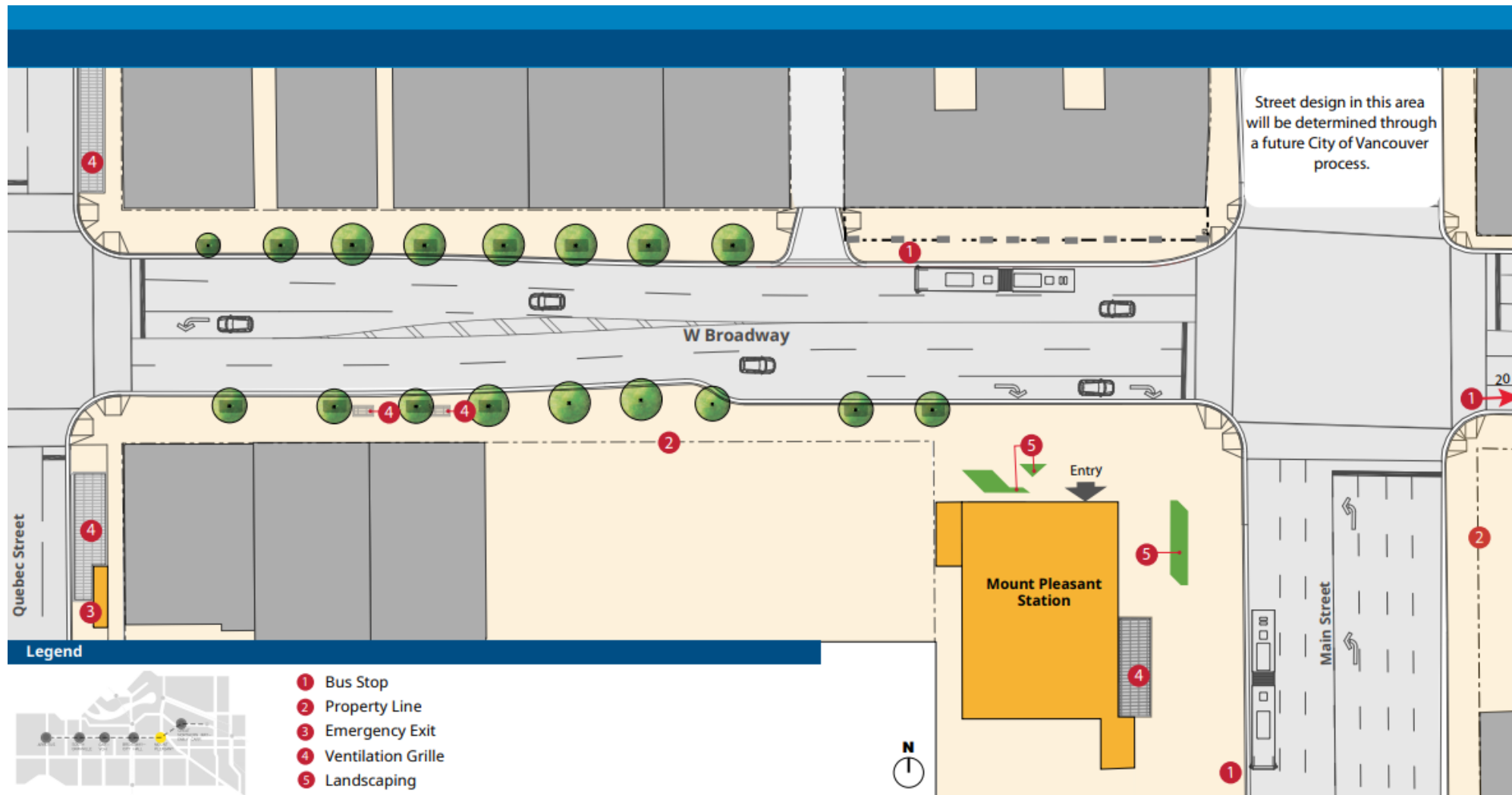
- Consider using transit, alternate routes or transportation modes
- Use nearby parking options
- Pedestrian access maintained
- Plan ahead and allow extra travel time
- Follow all construction and traffic signage

Summer 2026: Reconstruction Phase Complete

- 4 lanes on E. Broadway between Main and Quebec streets
- Sidewalk on south side of E. Broadway reconnected to Main Street
- Wider sidewalks
- Safety fencing removed in most areas



Mount Pleasant Station Streetscape



Note: Street design concepts were developed by the City of Vancouver to align with Broadway Subway Project technical requirements and may be updated as needed.

Remaining Station Sites

- Work at each station will be staggered to minimize impact on traffic
- Each station site is unique and requires a customized approach
- More information about each site will be shared in advance
- Traffic deck removal across the full alignment to be complete in 2027

Thank you



transportation
investment
corporation

