



transportation  
investment  
corporation

# Monthly Status Report

---

Reporting Period: October 2025

# 1. Introduction

## 1.1. Project Overview

The Broadway Subway Project (“BSP” or “the Project”) is a 5.7-kilometre Advanced Light Rapid Transit (ALRT or SkyTrain) extension to the existing Millennium Line SkyTrain system from its current terminus at VCC-Clark Station to a new western terminus station at Arbutus Street and West Broadway. The Project scope includes:

- 700m of elevated guideway extending west from the existing VCC-Clark Station.
- 5 km of underground tunnel.
- 6 new underground stations:
  - Great Northern Way-Emily Carr Station;
  - Mount Pleasant Station;
  - Broadway-City Hall Station – designed to integrate with the Canada Line Broadway-City Hall Station;
  - Oak-VGH Station;
  - South Granville Station;
  - Arbutus Station – designed to allow for a future phase of investment to connect rapid transit to UBC.
- The new line is expected to go into service in fall 2027.

Additional information and updates about the Project can be found on the Project’s website at <https://www.broadwaysubway.ca/>.

## 1.2. Project Delivery

Transportation Investment Corporation, a provincial Crown corporation, is delivering and overseeing this \$2.954 billion project. The Project is being delivered under B.C.’s Community Benefits Agreement and the skilled trades workforce will be provided by B.C. Infrastructure Benefits Inc.

Broadway Subway Project Corporation (BSPC) has been selected as the design-build contractor.

The Broadway Subway Project is a key part of the rapid transit program in Metro Vancouver’s Mayors’ Council 10-Year Vision. The Vision is funded by the governments of B.C. and Canada, TransLink, and City of Vancouver. Once constructed, the Broadway Subway will be integrated with the regional transit network and operated and maintained by TransLink.

### 1.3. Project Goals

Based on the mandate and results of consultation, seven primary goals have been identified for the Project:

- **Transportation:** Fast, reliable, and efficient service that meets current and future capacity needs and integrates with the regional transit network and other modes of transportation.
- **Financial:** Affordable and cost-effective.
- **Environment:** Attracts new riders and reduces vehicle kilometres travelled.
- **Urban Development:** Supports current and future land use development along the Broadway Corridor and integrates with the surrounding neighbourhoods through high-quality urban design.
- **Economic Development:** Creates jobs and facilitates the efficient movement of goods and services during operation.
- **Social and Community:** Safe, secure, and accessible service that improves access to rapid transit for all, while managing impacts on heritage and archaeology.
- **Deliverability:** Constructible and operable.

## 2. Project Dashboard

Objectives			Project Status	Comments
Project Delivery	Scope	Project delivered within the approved scope.	●	<ul style="list-style-type: none"> <li>The Project is being delivered within scope. The Project includes a primarily tunnelled extension of the existing Millennium Line SkyTrain system from VCC-Clark Station to a new station at Arbutus Street.</li> </ul>
	Schedule	Project delivered within the approved schedule.	●	<ul style="list-style-type: none"> <li>The new line is expected to go into service in fall 2027.</li> <li>The Project is tracking within the approved schedule. Schedule management is a critical focus with monthly reviews and close collaboration with the contractor.</li> </ul>
	Budget	Project delivered within the approved budget of \$2.954 billion.	●	<ul style="list-style-type: none"> <li>The Project spending for the month of October 2025 was \$28.9 million.</li> <li>Total Project spending to date is \$2.036 billion.</li> <li>Total Federal Recoveries to date are \$681.8 million and City of Vancouver contribution is \$100.3 million.</li> </ul>
	Safety	Take every reasonable step to ensure that work is performed safely and in compliance with all applicable safety regulations, and in accordance with government policy.	●	<ul style="list-style-type: none"> <li>The Project team monitored the implementation of the health and safety program and performed site visits.</li> <li>There have been 48 lost time injuries on the Project to date.</li> <li>The Lost Time Injury Frequency Rate (LTIFR) for the Project is 1.2 which is less than the 2024 WorkSafeBC rate of 1.7 for Construction Sector – Large Employers (100+ employees).</li> <li>The LTIFR benchmark is now based on the 2024 WorkSafeBC Construction Sector rate, replacing previous subsector and classification unit benchmarks.</li> </ul>
	Quality	Implement and maintain an effective Quality Management System.	●	<ul style="list-style-type: none"> <li>Quality monitoring and auditing of select work activities and processes continue.</li> <li>Review of quality documentation submittals continues.</li> </ul>
	Environmental	Ensure work is performed in an environmentally responsible manner.	●	<ul style="list-style-type: none"> <li>Site-specific environmental workplans are being implemented.</li> <li>Weekly environmental monitoring is being completed with reports submitted by BSPC.</li> <li>Work to mitigate construction noise at all stations is ongoing.</li> </ul>

				<ul style="list-style-type: none"> <li>Province-led monthly monitoring of environmental programs continues, with ad-hoc site visits as required.</li> </ul>
	<b>Design and Construction</b>	Provide design and technical oversight, coordinate and manage activities on site, and conduct compliance reviews.	●	<ul style="list-style-type: none"> <li>Continued finalizing systems design.</li> <li>Continued progress on remaining excavation, and utility work.</li> <li>Ongoing construction of permanent works along the Elevated Guideway and at all six stations.</li> </ul>
	<b>Labour Model</b>	Work collaboratively with BC Infrastructure Benefits Inc. (BCIB) to successfully implement the Community Benefits Agreement (CBA).	●	<ul style="list-style-type: none"> <li>Ongoing coordination and collaboration with BCIB and BSPC to implement the CBA.</li> <li>Ongoing discussions regarding current and future Project workforce.</li> </ul>
<b>Partners/Stakeholders</b>	<b>First Nations</b>	Continue to build and maintain a positive collaborative working relationship.	●	<ul style="list-style-type: none"> <li>Targets for Indigenous contracting opportunities have all been achieved and engagement continues with First Nations on further opportunities.</li> <li>Continued engagement with First Nations in relation to the Project and cultural recognition.</li> <li>Project-specific agreements with First Nations have been finalized.</li> </ul>
	<b>Third Parties</b>	Continue to build and maintain positive relationships with Project Partners and other third parties.	●	<ul style="list-style-type: none"> <li>Ongoing third-party engagement for successful Project implementation and integration.</li> <li>Ongoing discussions with TransLink regarding Operations and Control Centre (OCC2) and SkyTrain systems integration.</li> <li>Ongoing discussions with Canada Line regarding integration with Broadway-City Hall Station.</li> </ul>
	<b>Public and Stakeholder Engagement</b>	Continue to build and maintain relationships with the community, provide information about Project activities and respond to stakeholder concerns related to construction.	●	<ul style="list-style-type: none"> <li>Ongoing engagement with local businesses, stakeholders, residents, and the public.</li> </ul>

Status	Description
●	Managing critical issues, negotiating resolution; action required immediately
●	Managing some issues, negotiating resolution; action required in the near term
●	Managing day to day operations

### 3. Project Documents and Achievements to Date

Project Delivery	Project Planning and Development	<ul style="list-style-type: none"> <li>– Business Case released (2018).</li> <li>– Cost Report released (2018).</li> <li>– Project Overview released (2018).</li> <li>– Risk Report released (2018).</li> <li>– Strategic Options Whitepaper released (2018).</li> <li>– Executed Design-Build-Finance Agreement (August 2020).</li> </ul>
	Environmental	<ul style="list-style-type: none"> <li>– Environmental technical studies complete (2017-2018).</li> <li>– Environmental Socio-Economic Report complete (2020).</li> <li>– Environmental Workplans complete (2022).</li> </ul>
	Design and Construction	<ul style="list-style-type: none"> <li>– Geotechnical studies complete (2016-2017).</li> <li>– Reference concept design complete (2018).</li> <li>– Traffic modelling complete (2017-2019).</li> <li>– Geotechnical Subsurface Baseline Report complete (2019).</li> <li>– Geotechnical investigations commenced (2020).</li> <li>– Building abatement complete (2021).</li> <li>– Building demolitions at station sites complete (2021).</li> <li>– Piling for traffic decks complete at Mount Pleasant (2021), Broadway-City Hall (2021), Oak-VGH (2022), South Granville (2022), and Arbutus stations (2022).</li> <li>– Traffic deck installation complete at Mount Pleasant (2022), Broadway-City Hall (2022), Oak-VGH (2022), South Granville (2022) and Arbutus (2023) stations.</li> <li>– Station box excavation complete at all stations: Great Northern Way-Emily Carr (2022), Mount Pleasant (2022), Broadway-City Hall (2023), Oak-VGH (2023), South Granville (2023) and Arbutus (2023).</li> <li>– Station box base slab complete at all stations: Great Northern Way-Emily Carr (2022), Mount Pleasant (2022), Broadway-City Hall – including crossover box (2023), Oak-VGH (2023), South Granville (2023) and Arbutus – including crossover box (2024).</li> <li>– Elevated guideway pier and girder installation complete (2023), and structure finished (2024).</li> <li>– Both TBMs launched (2022) and completed boring (2024).</li> <li>– Station box roof slab complete at Great Northern Way-Emily Carr, Mount Pleasant and Oak-VGH stations (2025).</li> </ul>
Partners/Stakeholders	Owner / Other Works	<ul style="list-style-type: none"> <li>– TBM power – BC Hydro (2019).</li> <li>– Propulsion Power Substations including upgrade to dedicated power at VCC-Clark Station – BC Hydro (2019).</li> <li>– Utility relocate at Main Street – TELUS (2019).</li> <li>– Utility relocate at Great Northern Way – TELUS/FortisBC/BC Hydro (2019).</li> <li>– Civil construction and utility relocate at Arbutus and Cambie – TELUS (2020).</li> <li>– Trolley overhead relocations of bus routes 14, 16, and 17 – Coast Mountain Bus Company (2020).</li> <li>– Trolley overhead removals of trolley infrastructure on Broadway – Coast Mountain Bus Company (2020).</li> </ul>

		<ul style="list-style-type: none"> <li>– Utility relocate at Cambie – FortisBC (2020).</li> <li>– Electrical duct utility relocate at South Granville and Arbutus – City of Vancouver (2021).</li> <li>– 901 Great Northern Way building modification completed (2021).</li> </ul>
	<b>Labour</b>	<ul style="list-style-type: none"> <li>– Community Benefits Agreement (July 2018) – amended and restated March 2022 and July 2025.</li> <li>– BCIB-AIRCC Enabling Agreement (July 2019).</li> <li>– Project Definition: Broadway Subway Project (July 2019).</li> <li>– BCIB Health and Safety Program (March 2020).</li> <li>– BCIB-Contractor Agreement (August 2020).</li> <li>– BCIB-Subcontractor Agreement (August 2020).</li> </ul>
	<b>First Nations</b>	<ul style="list-style-type: none"> <li>– Capacity Agreement for the Environmental and Socio-Economic Review (2018).</li> <li>– Contracting and employment requirements finalized (2020).</li> <li>– Cultural recognition opportunities selected by First Nations (2021).</li> </ul>
	<b>Third Parties</b>	<ul style="list-style-type: none"> <li>– Memorandum of Understanding – City of Vancouver (2017).</li> <li>– Memorandum of Understanding – TransLink (2018).</li> <li>– Canada–British Columbia Integrated Bilateral Agreement for the Investing in Canada Infrastructure Program – Government of Canada (2018).</li> <li>– Canada Line Amending Agreement – InTransit BC Phase 1 (2019).</li> <li>– South Granville Station Integration Agreement – PCI (2019).</li> <li>– Vancouver Municipal Agreement – City of Vancouver (2020).</li> <li>– Metro Vancouver Accommodation Agreement (2020).</li> <li>– Broadway Subway Project Support Agreement – TransLink (2020).</li> <li>– Canada Line Amending Agreement – InTransit BC Phase 2 (2020).</li> <li>– Integration Agreement – TransLink (2020).</li> <li>– Great Northern Way-Emily Carr Station Integration Agreement – PCI (2020).</li> </ul>
	<b>Public and Stakeholder Engagement</b>	<ul style="list-style-type: none"> <li>– Phase 1 and 2 engagements (led by TransLink and City of Vancouver) <ul style="list-style-type: none"> <li>○ Phase 1 engagement (December 2016 – February 2017).</li> <li>○ Phase 2 engagement (May 2017 – July 2017).</li> </ul> </li> <li>– Broadway Subway Project Engagement (Province-led) <ul style="list-style-type: none"> <li>○ Local business survey (July 2019 – December 2019).</li> <li>○ Community engagement (October 2019 – December 2019).</li> <li>○ Community Office (open from September 2019 - January 2025).</li> <li>○ Established 24/7 construction information line (December 2019).</li> </ul> </li> <li>– Station Design Advisory Process (BSPC-led) <ul style="list-style-type: none"> <li>○ First engagement occurred (November – December 2020).</li> <li>○ First engagement summary report released (2021).</li> <li>○ Second engagement (April – May 2021).</li> </ul> </li> </ul>

## 4. October Highlights and Three Month Lookahead

### 4.1. Safety

<b>Scope:</b>	<ul style="list-style-type: none"> <li>– Oversee and monitor health and safety: <ul style="list-style-type: none"> <li>○ Management plans and systems</li> <li>○ Goals, objectives, and performance metrics</li> <li>○ Roles and responsibilities</li> <li>○ Planning and coordination of major Project activities</li> <li>○ Compliance with WorkSafeBC, municipalities, and government agencies</li> <li>○ Continual improvement process</li> <li>○ Risk management</li> <li>○ Statistics and trends</li> </ul> </li> </ul>
<b>Monthly Highlights:</b>	<ul style="list-style-type: none"> <li>– Performed weekly site visits to observe compliance and areas of improvement.</li> <li>– Focused on monitoring the management of public safety.</li> <li>– Monitored compliance with underground work activities.</li> <li>– Received the reported Lost Time Injury Frequency Rate (LTIFR): <ul style="list-style-type: none"> <li>○ The Project LTIFR to date is 1.2, which is less than the 2024 WorkSafeBC rate of 1.7 for Construction Sector – Large Employers (100+ employees).</li> </ul> </li> <li>– Monitored compliance of the Safety Management Plan.</li> </ul>
<b>Three Month Lookahead:</b>	<ul style="list-style-type: none"> <li>– Continue to: <ul style="list-style-type: none"> <li>○ Provide health and safety support to involved parties.</li> <li>○ Perform regular health and safety inspections at Project sites.</li> <li>○ Oversee the health and safety planning and performance for activities in underground work areas.</li> <li>○ Monitor the management of public safety.</li> </ul> </li> <li>– Perform regular health and safety spot audits on specific activities or elements of BSPC's safety plan.</li> </ul>

### 4.2. Quality

<b>Scope:</b>	<ul style="list-style-type: none"> <li>– Establish quality management Project objectives and performance measures.</li> <li>– Manage Project quality management activities.</li> <li>– Monitor relevant quality management performance metrics.</li> <li>– Outline relevant quality management processes and activities.</li> </ul>
<b>Monthly Highlights:</b>	<ul style="list-style-type: none"> <li>– Completed three (3) quality observation field visits related to BSPC's quality activities at Mount Pleasant, Oak-VGH and Broadway-City Hall stations.</li> <li>– Initiated ten (10) Non-Conformity Reports (NCRs) this month related to communication, construction, design, mechanical (x2), structural (x3) and systems (x2). To date, there have been a total of 510 NCRs (38 open and 472 closed).</li> </ul>
<b>Three Month Lookahead:</b>	<ul style="list-style-type: none"> <li>– Continue regular monitoring of quality activities by means of discipline specific field visits, meetings, and other review and communication processes.</li> <li>– Continue scheduled quality system audits, surveillance audits, and observation field visits.</li> <li>– Continue to review quality documentation submissions.</li> </ul>



### 4.3. Environmental

<b>Scope:</b>	<ul style="list-style-type: none"> <li>– Oversee BSPC’s measures to manage and mitigate risks identified in the Environmental and Socio-Economic Review (ESR).</li> <li>– Review environmental submissions and reports.</li> <li>– Monitor Construction Environmental Management Plan (CEMP) implementation through review of weekly environmental monitoring reports, monthly audits and ad-hoc site inspections.</li> <li>– Support engagement with First Nations on environment-related items.</li> </ul>
<b>Monthly Highlights:</b>	<ul style="list-style-type: none"> <li>– Completed review of BSPC’s weekly and monthly reporting to monitor compliance with the CEMP.</li> <li>– Identified opportunities for improvement and successes from monthly audit and ad-hoc site inspections.</li> <li>– Continued focus on monitoring and mitigation of construction noise, especially as it relates to night and shoulder work.</li> </ul>
<b>Three Month Lookahead:</b>	<ul style="list-style-type: none"> <li>– Continue monthly and ad-hoc on-site environmental inspections at all sites.</li> <li>– Continue monitoring refinements to noise mitigation/monitoring programs at all sites, especially as it relates to night and shoulder work.</li> <li>– Focus monitoring and inspections on erosion and sediment control and water management.</li> </ul>

### 4.4. Design and Construction

<b>Scope:</b>	<ul style="list-style-type: none"> <li>– Provide technical input to the procurement processes.</li> <li>– Develop a design concept, technical requirements/specifications, and related technical studies for the Project.</li> <li>– Conduct Project-related traffic operations modelling, data collection, and other related engineering services.</li> <li>– Conduct compliance reviews of work by BSPC.</li> <li>– BSPC design and construction activities include: <ul style="list-style-type: none"> <li>○ Non-design</li> <li>○ Systems design</li> <li>○ Enabling works including site preparation, building demolitions and utility relocations</li> <li>○ Construction of six (6) stations</li> <li>○ Elevated Guideway construction</li> <li>○ Underground guideway construction by TBM</li> <li>○ Systems installation</li> <li>○ Testing and commissioning</li> </ul> </li> </ul>
<b>Monthly Highlights:</b>	<p><u>Design:</u></p> <ul style="list-style-type: none"> <li>– Continued finalizing systems design.</li> </ul> <p><u>Traffic:</u></p> <ul style="list-style-type: none"> <li>– Continued to monitor temporary parking reinstatement at select locations on Broadway outside of peak periods together with the City of Vancouver and TransLink.</li> <li>– Continued to implement temporary traffic diversions throughout the corridor to accommodate construction.</li> <li>– Routine traffic deck inspections and maintenance.</li> </ul> <p><u>Tunnel:</u></p> <ul style="list-style-type: none"> <li>– Continued tunnel fit-out, including lights, radio brackets and fire protection pipes.</li> </ul>

- Continued trackwork installation.
- Commenced trackwork final alignment and fine-tuning.
- Continued walkway wall installation.

#### Elevated Guideway:

- Commenced cable pulling for systems.
- Continued trackwork final alignment and fine-tuning.
- Commenced LIM (Linear Induction Motor) rail installation.
- Continued walkway installation.

#### Great Northern Way-Emily Carr:

- Continued concrete wall and column construction in headhouse.
- Continued concrete wall construction in the station box.
- Continued wall construction in the transition box, and U-section.
- Continued construction of masonry walls in the headhouse and station box.
- Continued fit-out of service rooms.

#### Mount Pleasant:

- Continued concrete wall construction in the station box and headhouse.
- Continued masonry wall construction in the station box and headhouse.
- Continued construction of the vent shafts.
- Continued construction of permanent utilities.
- Commenced tunnel ventilation system equipment installation.
- Commenced propulsion power substation equipment installation.

#### Broadway-City Hall:

- Commenced backfilling at crossover box.
- Continued fit-out in service rooms in the station box.
- Continued construction of roof slabs in the station box.
- Continued construction of walls and roof slabs in the headhouse.
- Completed construction of concourse slab for the west passenger connections to Canada Line.
- Continued construction of upper level walls for the west passenger connections to Canada Line.
- Continued modification of existing Canada Line platform.
- Continued construction of masonry walls.
- Continued trackwork construction in the crossover box.

#### Oak-VGH:

- Continued construction of station and headhouse walls.
- Continued construction of emergency exit and northwest vent shaft.
- Continued construction of masonry walls at headhouse concourse level.
- Continued construction of masonry walls at station box concourse level.
- Continued fit-out in service rooms.

#### South Granville:

- Continued construction of station walls.
- Continued construction of concourse level roof slabs in the station box.
- Continued masonry wall works at station box platform and concourse levels.
- Continued fit-out in service rooms.
- Continued permanent utility works.

#### Arbutus:

- Continued roof slab, wall and column construction at the headhouse.
- Continued wall construction in the station box.
- Completed concourse slab in the station box.
- Continued platform slab construction in the station box.
- Continued masonry block wall construction in the headhouse and station box.

	<ul style="list-style-type: none"> <li>– Continued tail track tunnel structural construction.</li> <li>– Continued fit-out in service rooms.</li> <li>– Completed waterproofing in the crossover box.</li> <li>– Completed first phase of backfilling in the crossover box.</li> </ul>
<b>Three Month Lookahead:</b>	<p><u>Design:</u></p> <ul style="list-style-type: none"> <li>– Finalize systems design.</li> </ul> <p><u>Traffic:</u></p> <ul style="list-style-type: none"> <li>– Prepare the transit detour along Quebec Street, E. 8th Avenue and Main Street.</li> <li>– Implement temporary road closure for vehicles on E. Broadway between Quebec and Main streets.</li> <li>– Continue to implement temporary traffic diversions throughout the corridor to accommodate construction.</li> <li>– Together with the City of Vancouver and TransLink, continue monitoring temporary parking reinstatement at select locations on Broadway outside of peak periods.</li> <li>– Routine traffic deck inspections and maintenance.</li> </ul> <p><u>Tunnel:</u></p> <ul style="list-style-type: none"> <li>– Continue trackwork installation.</li> <li>– Continue tunnel fit-out, including lights, radio brackets, walkway walls and fire protection pipes.</li> </ul> <p><u>Elevated Guideway:</u></p> <ul style="list-style-type: none"> <li>– Complete trackwork fine-tuning and final alignment.</li> <li>– Commence power rail installation.</li> </ul> <p><u>Great Northern Way-Emily Carr:</u></p> <ul style="list-style-type: none"> <li>– Continue concrete wall construction in the station box.</li> <li>– Continue concrete wall and column construction in the head house.</li> <li>– Continue concrete wall construction in the u-section and transition box.</li> <li>– Continue masonry wall construction in the headhouse and station box.</li> <li>– Continue fit-out in service rooms.</li> <li>– Commence installation of escalators.</li> <li>– Commence cable pulling for systems.</li> </ul> <p><u>Mount Pleasant:</u></p> <ul style="list-style-type: none"> <li>– Continue concrete wall construction in the station box and headhouse.</li> <li>– Continue construction of the vent shafts.</li> <li>– Continue fit-out in service rooms.</li> <li>– Continue mechanical installation of escalators.</li> <li>– Continue utilities construction.</li> <li>– Commence propulsion power substation equipment installation.</li> <li>– Commence cable pulling for systems.</li> <li>– Continue tunnel ventilation system installation.</li> </ul> <p><u>Broadway-City Hall:</u></p> <ul style="list-style-type: none"> <li>– Complete roof slab for the station box.</li> <li>– Continue construction of roof slabs in the headhouse.</li> <li>– Continue modification of existing Canada Line platform.</li> <li>– Continue construction of the headhouse structure.</li> <li>– Complete backfilling at the south underpass adjacent to Cambie Street.</li> <li>– Continue construction of the circulation shaft concourse slab (west side of Cambie Street).</li> <li>– Commence backfilling of the diamond crossover.</li> <li>– Commence utilities work.</li> <li>– Continue trackwork installation in the diamond crossover box.</li> <li>– Continue masonry wall construction.</li> </ul>

	<ul style="list-style-type: none"> <li>– Continue MEP fit-out of technical rooms.</li> </ul> <p><u>Oak-VGH:</u></p> <ul style="list-style-type: none"> <li>– Continue construction of station and headhouse walls.</li> <li>– Continue structural works at emergency exit and vent shafts.</li> <li>– Continue masonry wall construction.</li> <li>– Continue fit-out in service rooms.</li> <li>– Begin permanent utility works.</li> <li>– Commence roof slab waterproofing.</li> <li>– Commence preparation for propulsion power substation equipment installation.</li> <li>– Commence installation of escalators.</li> </ul> <p><u>South Granville:</u></p> <ul style="list-style-type: none"> <li>– Complete construction of station roof slabs and walls.</li> <li>– Continue utility relocation works.</li> <li>– Continue masonry wall construction.</li> <li>– Continue fit-out in service rooms.</li> <li>– Begin excavation for emergency exit and vent shaft.</li> <li>– Commence installation of escalators.</li> </ul> <p><u>Arbutus:</u></p> <ul style="list-style-type: none"> <li>– Continue tail track tunnel structural construction.</li> <li>– Continue roof slab construction in the headhouse.</li> <li>– Commence final roof slab construction in the station box.</li> <li>– Continue platform slab construction in the station box.</li> <li>– Continue wall construction in the headhouse, station box and crossover box.</li> <li>– Continue masonry block wall construction in the headhouse and station box.</li> <li>– Continue fit-out in service rooms.</li> <li>– Continue track slab construction.</li> <li>– Continue trackwork installation in the double crossover box.</li> <li>– Complete double crossover box superstructure.</li> <li>– Continue backfilling the crossover box.</li> <li>– Commence tunnel ventilation system installation.</li> <li>– Commence preparation for propulsion power substation equipment installation.</li> </ul>
--	---

## 4.5. First Nations

<b>Scope:</b>	<ul style="list-style-type: none"> <li>– Consultation and engagement with First Nations on Project materials and cultural recognition at stations.</li> </ul>
<b>Monthly Highlights:</b>	<ul style="list-style-type: none"> <li>– Shared Project updates and materials with First Nations, including environmental management plans and reports, archaeological reports, and construction updates.</li> <li>– Held discussions with First Nations on art and cultural recognition, including progressing art designs for the stations.</li> </ul>
<b>Three Month Lookahead:</b>	<ul style="list-style-type: none"> <li>– Continue sharing information, identifying, and resolving issues, and identifying Project-related opportunities for First Nations.</li> <li>– Continue engagement with First Nations related to art and cultural recognition at stations, including supporting the work of artists.</li> <li>– Work with First Nations to identify training programs that support Project employment and update labour forecasting.</li> </ul>

## 4.6. Third Parties

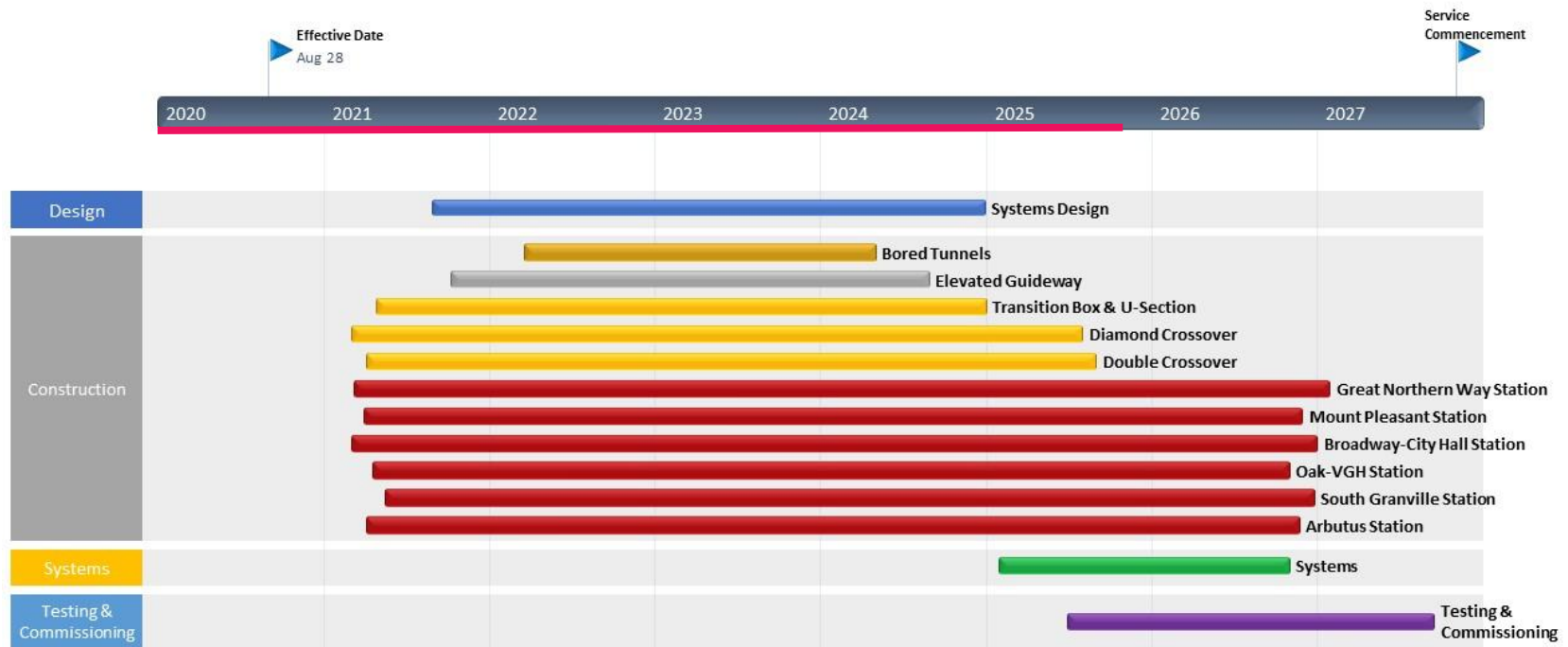
<b>Scope:</b>	<ul style="list-style-type: none"> <li>– Engage with TransLink, the City of Vancouver, PCI, InTransit BC, and other third parties during the Project implementation phase.</li> <li>– TransLink Agreement. <ul style="list-style-type: none"> <li>○ Broadway Subway Project Support Agreement.</li> </ul> </li> <li>– Municipal Agreement. <ul style="list-style-type: none"> <li>○ Vancouver Municipal Agreement with the City of Vancouver.</li> </ul> </li> <li>– Agreements with InTransit BC and TransLink for technical integration of the new Millennium Line Broadway-City Hall Station with the existing Canada Line Broadway-City Hall Station. <ul style="list-style-type: none"> <li>○ Canada Line Amending Agreement – InTransit BC Phase 1 (between TransLink and InTransit BC).</li> <li>○ Canada Line Amending Agreement – InTransit BC Phase 2 (between TransLink and InTransit BC)</li> <li>○ Integration Agreement with TransLink</li> </ul> </li> <li>– PCI Agreements. <ul style="list-style-type: none"> <li>○ South Granville Station Integration Agreement with PCI.</li> <li>○ Great Northern Way-Emily Carr Station Integration Agreement with PCI.</li> </ul> </li> <li>– Accommodation Agreement with Metro Vancouver.</li> </ul>
<b>Monthly Highlights:</b>	<ul style="list-style-type: none"> <li>– Held ongoing discussions with TransLink regarding OCC2 implementation and access for equipment installation.</li> <li>– Continued collaboration with Canada Line regarding design and construction integration at Broadway-City Hall Station.</li> <li>– Continued collaboration with PCI regarding design and construction at relevant adjacent development sites.</li> </ul>
<b>Three Month Lookahead:</b>	<ul style="list-style-type: none"> <li>– Continue to engage third parties to ensure successful implementation of executed agreements.</li> <li>– Coordinate design and construction interface between BSPC and third parties.</li> </ul>

## 4.7. Public and Stakeholder Engagement

<b>Scope:</b>	<ul style="list-style-type: none"> <li>– Manage ongoing public and stakeholder communications, and community and business relations.</li> </ul>
<b>Monthly Highlights:</b>	<ul style="list-style-type: none"> <li>– Provided a public update regarding traffic deck removal that will start at Mount Pleasant Station in January 2026.</li> <li>– Continued direct outreach and distribution of construction notices regarding utility work at Broadway-City Hall, Oak-VGH and South Granville stations.</li> <li>– Distributed construction notice specific to the start of backfilling in the crossover area at Broadway-City Hall Station.</li> </ul>
<b>Three Month Lookahead:</b>	<ul style="list-style-type: none"> <li>– Install new temporary mural on safety fencing near Arbutus Station, and the second phase of children's artwork on the mural adjacent to Broadway-City Hall Station.</li> <li>– Host community outreach activities along the Project alignment.</li> <li>– Continue outreach walks and other frequent direct contact with businesses.</li> <li>– Conduct ongoing regular updates and meetings with the Business Improvement Associations, Traffic Advisory and Arbutus Schools Traffic Liaison groups.</li> <li>– Continue regular interactions with residents and key stakeholders.</li> <li>– Provide progress updates on track installation, work inside the tunnels, and construction of stations.</li> <li>– Continue to distribute construction notifications and respond to public enquiries.</li> </ul>

## 5. Schedule

The following schedule depicts estimated timelines from the contract effective date to the new line's in-service date, and reflects the updated schedule announced on May 24, 2024.



## 6. Project Photos



Figure 1: Elevated Guideway: Progressing with cable pulling for systems.



Figure 2: Great Northern Way-Emily Carr Station: Progressing with concrete finishing work inside the station.



Figure 3: Mount Pleasant Station: Progressing with waterproofing on the station box roof.

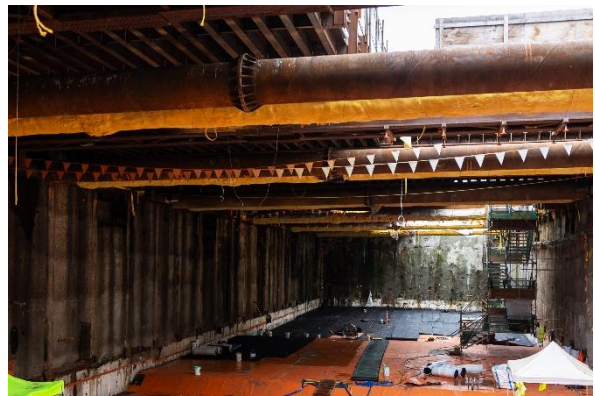


Figure 4: Broadway-City Hall Station: Progressing with waterproofing on the crossover box roof.



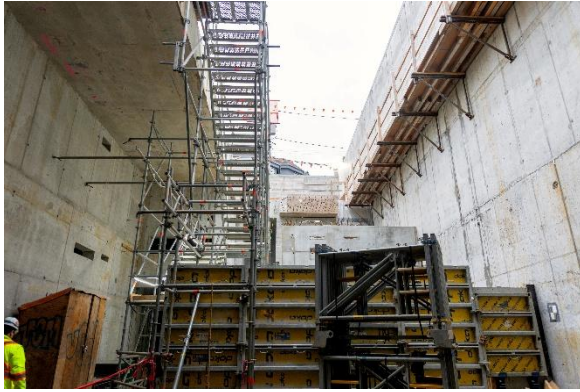


Figure 5: Oak-VGH Station: Progressing with concrete pours for interior walls in the headhouse.



Figure 6: South Granville Station: Progressing with rebar installation for the final segment of the underground station roof.

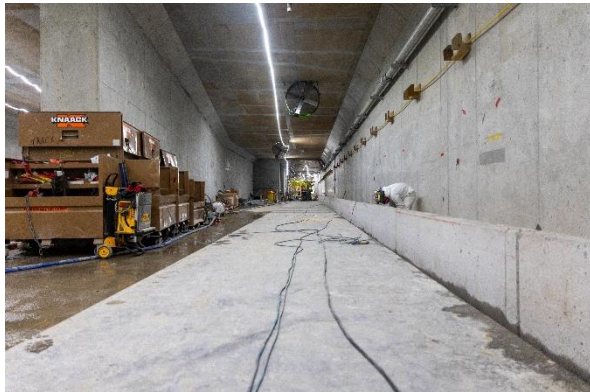


Figure 7: Arbutus Station: Progressing with the walkway walls in the crossover box.



Figure 8: Tunnels: Progressing with alignment and installation of running rail.