



transportation
investment
corporation

Monthly Status Report

Reporting Period: April 2026

1. Introduction

1.1. Project Overview

The Broadway Subway Project (“BSP” or “the Project”) is a 5.7-kilometre Advanced Light Rapid Transit (ALRT or SkyTrain) extension to the existing Millennium Line SkyTrain system from its current terminus at VCC-Clark Station to a new western terminus station at Arbutus Street and West Broadway. The Project scope includes:

- 700m of elevated guideway extending west from the existing VCC-Clark Station.
- 5 km of underground tunnel.
- 6 new underground stations:
 - Great Northern Way-Emily Carr Station;
 - Mount Pleasant Station;
 - Broadway-City Hall Station – designed to integrate with the Canada Line Broadway-City Hall Station;
 - Oak-VGH Station;
 - South Granville Station;
 - Arbutus Station – designed to allow for a future phase of investment to connect rapid transit to UBC.
- The new line is expected to go into service in fall 2027.

Additional information and updates about the Project can be found on the Project’s website at <https://www.broadwaysubway.ca/>.

1.2. Project Delivery

Transportation Investment Corporation, a provincial Crown corporation, is delivering and overseeing this \$2.954 billion project. The Project is being delivered under B.C.’s Community Benefits Agreement and the skilled trades workforce will be provided by B.C. Infrastructure Benefits Inc.

Broadway Subway Project Corporation (BSPC) has been selected as the design-build contractor.

The Broadway Subway Project is a key part of the rapid transit program in Metro Vancouver’s Mayors’ Council 10-Year Vision. The Vision is funded by the governments of B.C. and Canada, TransLink, and City of Vancouver. Once constructed, the Broadway Subway will be integrated with the regional transit network and operated and maintained by TransLink.

1.3. Project Goals

Based on the mandate and results of consultation, seven primary goals have been identified for the Project:

- **Transportation:** Fast, reliable, and efficient service that meets current and future capacity needs and integrates with the regional transit network and other modes of transportation.
- **Financial:** Affordable and cost-effective.
- **Environment:** Attracts new riders and reduces vehicle kilometres travelled.
- **Urban Development:** Supports current and future land use development along the Broadway Corridor and integrates with the surrounding neighbourhoods through high-quality urban design.
- **Economic Development:** Creates jobs and facilitates the efficient movement of goods and services during operation.
- **Social and Community:** Safe, secure, and accessible service that improves access to rapid transit for all, while managing impacts on heritage and archaeology.
- **Deliverability:** Constructible and operable.

2. Project Dashboard

Objectives		Project Status	Comments	
Project Delivery	Scope	Project delivered within the approved scope.	●	<ul style="list-style-type: none"> The Project is being delivered within scope. The Project includes a primarily tunnelled extension of the existing Millennium Line SkyTrain system from VCC-Clark Station to a new station at Arbutus Street.
	Schedule	Project delivered within the approved schedule.	●	<ul style="list-style-type: none"> The new line is expected to go into service in fall 2027. The Project is tracking within the approved schedule. Schedule management is a critical focus with monthly reviews and close collaboration with the contractor.
	Budget	Project delivered within the approved budget of \$2.954 billion.	●	<ul style="list-style-type: none"> The Project spending for the month of April 2026 was \$41.4 million. Total Project spending to date is \$2.215 billion. Total Federal Recoveries to date are \$741.7 million and City of Vancouver contribution is \$100.3 million.
	Safety	Take every reasonable step to ensure that work is performed safely and in compliance with all applicable safety regulations, and in accordance with government policy.	●	<ul style="list-style-type: none"> The Project team monitored the implementation of the health and safety program and performed site visits. There have been 59 lost time injuries on the Project to date. The Lost Time Injury Frequency Rate (LTIFR) for the Project is 1.3 which is less than the 2024 WorkSafeBC rate of 1.7 for Construction Sector – Large Employers (100+ employees).
	Quality	Implement and maintain an effective Quality Management System.	●	<ul style="list-style-type: none"> Quality monitoring and auditing of select work activities and processes continue. Review of quality documentation submittals continues.
	Environmental	Ensure work is performed in an environmentally responsible manner.	●	<ul style="list-style-type: none"> Site-specific environmental workplans are being implemented. Weekly environmental monitoring is being completed with reports submitted by BSPC. Work to mitigate construction noise at all stations is ongoing. Province-led monthly monitoring of environmental programs continues, with ad-hoc site visits as required.

	Design and Construction	Provide design and technical oversight, coordinate and manage activities on site, and conduct compliance reviews.	●	<ul style="list-style-type: none"> – Continued finalizing systems design. – Continued progress on remaining excavation, and utility work. – Ongoing construction of permanent works along the Elevated Guideway and at all six stations.
	Labour Model	Work collaboratively with BC Infrastructure Benefits Inc. (BCIB) to successfully implement the Community Benefits Agreement (CBA).	●	<ul style="list-style-type: none"> – Ongoing coordination and collaboration with BCIB and BSPC to implement the CBA. – Ongoing discussions regarding current and future Project workforce.
Partners/Stakeholders	First Nations	Continue to build and maintain a positive collaborative working relationship.	●	<ul style="list-style-type: none"> – Targets for Indigenous contracting opportunities have all been achieved and engagement continues with First Nations on further opportunities. – Continued engagement with First Nations in relation to the Project and cultural recognition. – Project-specific agreements with First Nations have been finalized.
	Third Parties	Continue to build and maintain positive relationships with Project Partners and other third parties.	●	<ul style="list-style-type: none"> – Ongoing third-party engagement for successful Project implementation and integration. – Ongoing discussions with TransLink regarding Operations and Control Centre (OCC2) and SkyTrain systems integration. – Ongoing discussions with Canada Line regarding integration with Broadway-City Hall Station.
	Public and Stakeholder Engagement	Continue to build and maintain relationships with the community, provide information about Project activities and respond to stakeholder concerns related to construction.	●	<ul style="list-style-type: none"> – Ongoing engagement with local businesses, stakeholders, residents, and the public.

Status	Description
●	Managing critical issues, negotiating resolution; action required immediately
●	Managing some issues, negotiating resolution; action required in the near term
●	Managing day to day operations

3. Project Documents and Achievements to Date

Project Delivery	Project Planning and Development	<ul style="list-style-type: none"> – Business Case released (2018). – Cost Report released (2018). – Project Overview released (2018). – Risk Report released (2018). – Strategic Options Whitepaper released (2018). – Executed Design-Build-Finance Agreement (August 2020).
	Environmental	<ul style="list-style-type: none"> – Environmental technical studies complete (2017-2018). – Environmental Socio-Economic Report complete (2020). – Environmental Workplans complete (2022).
	Design and Construction	<ul style="list-style-type: none"> – Geotechnical studies complete (2016-2017). – Reference concept design complete (2018). – Traffic modelling complete (2017-2019). – Geotechnical Subsurface Baseline Report complete (2019). – Geotechnical investigations commenced (2020). – Building abatement and demolitions complete at station sites (2021). – Traffic deck installation complete at station sites on Broadway: Mount Pleasant (2022), Broadway-City Hall (2022), Oak-VGH (2022), South Granville (2022) and Arbutus (2023). – Station box excavation complete at all stations: Great Northern Way-Emily Carr (2022), Mount Pleasant (2022), Broadway-City Hall (2023), Oak-VGH (2023), South Granville (2023) and Arbutus (2023). – Station box base slab complete at all stations: Great Northern Way-Emily Carr (2022), Mount Pleasant (2022), Broadway-City Hall – including crossover box (2023), Oak-VGH (2023), South Granville (2023) and Arbutus – including crossover box (2024). – Elevated guideway pier and girder installation complete (2023), and structure finished (2024). – Both TBMs launched (2022) and completed boring (2024). – Station box roof slab complete at all stations (2025).
Partners/Stakeholders	Owner / Other Works	<ul style="list-style-type: none"> – TBM power – BC Hydro (2019). – Propulsion Power Substations including upgrade to dedicated power at VCC-Clark Station – BC Hydro (2019). – Utility relocate at Main Street – TELUS (2019). – Utility relocate at Great Northern Way – TELUS/FortisBC/BC Hydro (2019). – Civil construction and utility relocate at Arbutus and Cambie – TELUS (2020). – Trolley overhead relocations of bus routes 14, 16, and 17 – Coast Mountain Bus Company (2020). – Trolley overhead removals of trolley infrastructure on Broadway – Coast Mountain Bus Company (2020). – Utility relocate at Cambie – FortisBC (2020). – Electrical duct utility relocate at South Granville and Arbutus – City of Vancouver (2021). – 901 Great Northern Way building modification completed (2021).

	Labour	<ul style="list-style-type: none"> - Community Benefits Agreement (July 2018) – amended and restated March 2022 and July 2025. - BCIB-AIRCC Enabling Agreement (July 2019). - Project Definition: Broadway Subway Project (July 2019). - BCIB Health and Safety Program (March 2020). - BCIB-Contractor Agreement (August 2020). - BCIB-Subcontractor Agreement (August 2020).
	First Nations	<ul style="list-style-type: none"> - Capacity Agreement for the Environmental and Socio-Economic Review (2018). - Contracting and employment requirements finalized (2020). - Cultural recognition opportunities selected by First Nations (2021).
	Third Parties	<ul style="list-style-type: none"> - Memorandum of Understanding – City of Vancouver (2017). - Memorandum of Understanding – TransLink (2018). - Canada–British Columbia Integrated Bilateral Agreement for the Investing in Canada Infrastructure Program – Government of Canada (2018). - Canada Line Amending Agreement – InTransit BC Phase 1 (2019). - South Granville Station Integration Agreement – PCI (2019). - Vancouver Municipal Agreement – City of Vancouver (2020). - Metro Vancouver Accommodation Agreement (2020). - Broadway Subway Project Support Agreement – TransLink (2020). - Canada Line Amending Agreement – InTransit BC Phase 2 (2020). - Integration Agreement – TransLink (2020). - Great Northern Way-Emily Carr Station Integration Agreement – PCI (2020).
	Public and Stakeholder Engagement	<ul style="list-style-type: none"> - Phase 1 and 2 engagements (led by TransLink and City of Vancouver) <ul style="list-style-type: none"> o Phase 1 engagement (December 2016 – February 2017). o Phase 2 engagement (May 2017 – July 2017). - Broadway Subway Project Engagement (Province-led) <ul style="list-style-type: none"> o Local business survey (July 2019 – December 2019). o Community engagement (October 2019 – December 2019). o Community Office (open from September 2019 - January 2025). o Established 24/7 construction information line (December 2019). - Station Design Advisory Process (BSPC-led) <ul style="list-style-type: none"> o First engagement occurred (November – December 2020). o First engagement summary report released (2021). o Second engagement (April – May 2021).

4. April Highlights and Three Month Lookahead

4.1. Safety

Scope:	<ul style="list-style-type: none"> – Oversee and monitor health and safety: <ul style="list-style-type: none"> ○ Management plans and systems ○ Goals, objectives, and performance metrics ○ Roles and responsibilities ○ Planning and coordination of major Project activities ○ Compliance with WorkSafeBC, municipalities, and government agencies ○ Continual improvement process ○ Risk management ○ Statistics and trends
Monthly Highlights:	<ul style="list-style-type: none"> – Performed weekly site visits to observe compliance and areas of improvement. – Focused on monitoring the management of public safety. – Monitored compliance with underground work activities. – Received the reported Lost Time Injury Frequency Rate (LTIFR): <ul style="list-style-type: none"> ○ The Project LTIFR to date is 1.3, which is less than the 2024 WorkSafeBC rate of 1.7 for Construction Sector – Large Employers (100+ employees). – Monitored compliance of the Safety Management Plan.
Three Month Lookahead:	<ul style="list-style-type: none"> – Continue to: <ul style="list-style-type: none"> ○ Provide health and safety support to involved parties. ○ Perform regular health and safety inspections at Project sites. ○ Oversee the health and safety planning and performance for activities in underground work areas. ○ Monitor the management of public safety. – Perform regular health and safety spot audits on specific activities or elements of BSPC’s safety plan.

4.2. Quality

Scope:	<ul style="list-style-type: none"> – Establish quality management Project objectives and performance measures. – Manage Project quality management activities. – Monitor relevant quality management performance metrics. – Outline relevant quality management processes and activities.
Monthly Highlights:	<ul style="list-style-type: none"> – Completed five (5) quality observation field visits related to BSPC’s quality and MEP (mechanical, electrical and plumbing) activities at Great Northern Way-Emily Carr Station/Elevated Guideway, and Broadway-City Hall (x2) and Mount Pleasant (x2) stations. – BSPC completed two (2) quality audits related to systems processes. – Initiated six (6) Non-Conformity Reports (NCR) this month related to environmental, mechanical, structural, systems (x2), and tunnel works and processes. To date, there have been a total of 533 NCRs (18 open and 515 closed).
Three Month Lookahead:	<ul style="list-style-type: none"> – Continue regular monitoring of quality activities by means of discipline specific field visits, meetings, and other review and communication processes.

	<ul style="list-style-type: none"> – Continue scheduled quality system audits, surveillance audits, and observation field visits. – Continue to review quality documentation submissions.
--	---

4.3. Environmental

Scope:	<ul style="list-style-type: none"> – Oversee BSPC’s measures to manage and mitigate risks identified in the Environmental and Socio-Economic Review (ESR). – Review environmental submissions and reports. – Monitor Construction Environmental Management Plan (CEMP) implementation through review of weekly environmental monitoring reports, monthly audits and ad-hoc site inspections. – Support engagement with First Nations on environment-related items.
Monthly Highlights:	<ul style="list-style-type: none"> – Completed review of BSPC’s weekly and monthly reporting to monitor compliance with the CEMP. – Identified opportunities for improvement and successes from monthly audit and ad-hoc site inspections. – Continued focus on monitoring and mitigation of construction noise, especially as it relates to night and shoulder work.
Three Month Lookahead:	<ul style="list-style-type: none"> – Continue monthly and ad-hoc on-site environmental inspections at all sites. – Continue monitoring refinements to noise mitigation/monitoring programs at all sites, especially as it relates to night and shoulder work. – Focus monitoring and inspections on erosion and sediment control and water management.

4.4. Design and Construction

Scope:	<ul style="list-style-type: none"> – Provide technical input to the procurement processes. – Develop a design concept, technical requirements/specifications, and related technical studies for the Project. – Conduct Project-related traffic operations modelling, data collection, and other related engineering services. – Conduct compliance reviews of work by BSPC. – BSPC design and construction activities include: <ul style="list-style-type: none"> ○ Non-design ○ Systems design ○ Enabling works including site preparation, building demolitions and utility relocations ○ Construction of six (6) stations ○ Elevated Guideway construction ○ Underground guideway construction by TBM ○ Systems installation ○ Testing and commissioning
Monthly Highlights:	<p><u>Design:</u></p> <ul style="list-style-type: none"> – Continued finalizing systems design. <p><u>Traffic:</u></p> <ul style="list-style-type: none"> – Continued to monitor temporary parking reinstatement at select locations on Broadway outside of peak periods together with the City of Vancouver and TransLink.

- Continued to implement temporary traffic diversions throughout the corridor to accommodate construction.
- Routine traffic deck inspections and maintenance.

Tunnel:

- Continued tunnel fit-out, including lights, radio brackets, and fire protection pipes.
- Completed trackwork installation.
- Continued trackwork final alignment and fine-tuning.
- Continued LIM (Linear Induction Motor) rail installation.
- Continued power rail installation.
- Continued walkway wall installation.
- Continued cable pulling for systems.

Elevated Guideway:

- Continued cable pulling for systems.
- Continued trackwork final alignment and fine-tuning.
- Continued noise barrier installation.

Great Northern Way-Emily Carr:

- Completed concrete wall and column construction in headhouse.
- Continued concrete wall construction in the station box.
- Continued construction of masonry walls in the headhouse and station box.
- Continued fit-out in service rooms.
- Continued cable pulling for systems.
- Continued backfilling around headhouse.
- Continued installation of headhouse escalators.
- Continued installation of elevators.
- Continued communication systems equipment installation.
- Continued tunnel ventilation system equipment installation.
- Continued power supply and distribution equipment installation.

Mount Pleasant:

- Continued backfill of station box.
- Continued concrete wall construction in the station box and headhouse.
- Continued masonry wall construction in the station box and headhouse.
- Continued construction of the vent shafts.
- Continued construction of permanent utilities.
- Continued tunnel ventilation system equipment installation.
- Continued cable pulling for systems.
- Completed power supply and distribution equipment installation.

Broadway-City Hall:

- Continued installation of escalators.
- Continued backfilling at crossover box.
- Continued backfilling at station box.
- Continued fit-out in service rooms.
- Continued construction of walls and roof slabs in the headhouse.
- Continued backfilling of west shaft structure.
- Continued modification of existing Canada Line platform.
- Continued construction of masonry walls.
- Completed trackwork construction in the crossover box.
- Continued permanent utilities work.
- Continued tunnel ventilation system equipment installation.
- Continued cable pulling for systems.

	<p><u>Oak-VGH:</u></p> <ul style="list-style-type: none"> - Continued construction of station and headhouse walls. - Continued construction of emergency exit and northwest vent shaft. - Continued construction of masonry walls in the headhouse and station box. - Continued fit-out in service rooms. - Continued preparation for propulsion power substation equipment installation. - Continued tunnel ventilation system equipment installation. - Continued permanent utility works. - Continued installation of escalators. - Completed roof slab waterproofing. - Continued backfilling of station box. - Commenced installation of elevators. <p><u>South Granville:</u></p> <ul style="list-style-type: none"> - Continued construction of station walls. - Continued construction of masonry walls in the station box. - Continued fit-out in service rooms. - Continued installation of elevators. - Continued installation of escalators. - Continued permanent utility works. - Continued construction of the emergency exit structure. - Continued vent shaft concrete works. - Continued roof slab waterproofing. - Continued tunnel ventilation system equipment installation. - Commenced backfilling of station box. <p><u>Arbutus:</u></p> <ul style="list-style-type: none"> - Continued roof slab waterproofing for the station box. - Continued masonry block wall construction in the headhouse and station box. - Continued tail track tunnel structural construction. - Continued fit-out in service rooms. - Continued special trackwork construction in the crossover box. - Continued street-level concrete wall construction. - Commenced backfill of the station box. - Commenced vent shaft concrete works. - Completed installation of escalators. - Commenced permanent utility works.
<p>Three Month Lookahead:</p>	<p><u>Design:</u></p> <ul style="list-style-type: none"> - Finalize systems design. <p><u>Traffic:</u></p> <ul style="list-style-type: none"> - Return one lane of traffic in each direction to E. Broadway between Main and Quebec streets. - Continue to implement temporary traffic diversions throughout the corridor to accommodate construction. - Together with the City of Vancouver and TransLink, continue monitoring temporary parking reinstatement at select locations on Broadway outside of peak periods. - Routine traffic deck inspections and maintenance. <p><u>Tunnel:</u></p> <ul style="list-style-type: none"> - Complete LIM (Linear Induction Motor) rail installation. - Continue power rail installation. - Continue tunnel fit-out, including lights, radio brackets, walkway walls, and fire protection pipes.

- Commence dynamic testing.

Elevated Guideway:

- Complete trackwork fine-tuning and final alignment.
- Complete cable pulling for systems.
- Commence walkway cover plate installation.
- Continue noise barrier installation.
- Commence dynamic testing.

Great Northern Way-Emily Carr:

- Continue concrete wall construction in the station box.
- Complete concrete roof construction in the headhouse.
- Continue masonry wall construction in the headhouse and station box.
- Continue fit-out in service rooms.
- Continue mechanical installation of escalators.
- Continue cable pulling for systems.
- Continue backfilling.
- Commence permanent utility works.
- Complete tunnel ventilation system equipment installation.
- Continue installation of elevators.

Mount Pleasant:

- Complete concrete wall construction in the station box and headhouse.
- Complete construction of the vent shafts.
- Continue fit-out in service rooms.
- Continue mechanical installation of escalators.
- Continue utilities construction.
- Complete tunnel ventilation system equipment installation.
- Continue communication systems equipment installation.
- Continue station backfill.

Broadway-City Hall:

- Continue construction of roof slabs in the headhouse.
- Continue modification of existing Canada Line platform.
- Continue construction of the headhouse structure.
- Complete backfilling and reinstatement work at the west shaft structure.
- Continue utility work.
- Continue masonry wall construction.
- Continue fit-out in the service rooms.
- Complete roof slab waterproofing in station box.
- Continue installation of escalators.
- Commence installation of elevators.
- Continue backfilling at crossover box and station box.
- Commence communication systems equipment installation.
- Continue tunnel ventilation system equipment installation.

Oak-VGH:

- Begin traffic deck removal.
- Continue station box backfilling.
- Complete construction of station and headhouse walls.
- Continue structural works at emergency exit and vent shafts.
- Complete masonry wall construction.
- Continue fit-out in service rooms.
- Continue permanent utility works.

	<ul style="list-style-type: none"> – Complete preparation for and commence propulsion power substation equipment installation. – Continue installation of escalators and elevators. – Continue tunnel ventilation system equipment installation. <p>South Granville:</p> <ul style="list-style-type: none"> – Complete construction of station walls. – Continue utility relocation works. – Continue masonry wall construction. – Continue fit-out in service rooms. – Continue concrete works for the emergency exit structure. – Continue vent shaft concrete works. – Complete roof slab waterproofing. – Continue backfilling of station box. – Continue installation of escalators in the station box. – Continue installation of elevators. – Continue tunnel ventilation system equipment installation. <p>Arbutus:</p> <ul style="list-style-type: none"> – Begin traffic deck removal. – Continue backfilling the station box. – Continue above-grade structures. – Continue tail track tunnel structural construction. – Continue masonry block wall construction in the headhouse and station box. – Continue fit-out in service rooms. – Continue track slab construction. – Continue trackwork installation in the double crossover box. – Continue backfilling the crossover box. – Complete preparation for propulsion power substation equipment installation. – Continue permanent utilities work.
--	---

4.5. First Nations

Scope:	<ul style="list-style-type: none"> – Consultation and engagement with First Nations on Project materials and cultural recognition at stations.
Monthly Highlights:	<ul style="list-style-type: none"> – Shared Project updates and materials with First Nations, including environmental management plans and reports, archaeological reports, and construction updates. – Held discussions with First Nations on art and cultural recognition, including progressing art designs for the stations.
Three Month Lookahead:	<ul style="list-style-type: none"> – Continue sharing information, identifying, and resolving issues, and identifying Project-related opportunities for First Nations. – Continue engagement with First Nations related to art and cultural recognition at stations, including supporting the work of artists. – Work with First Nations to identify training programs that support Project employment and update labour forecasting.

4.6. Third Parties

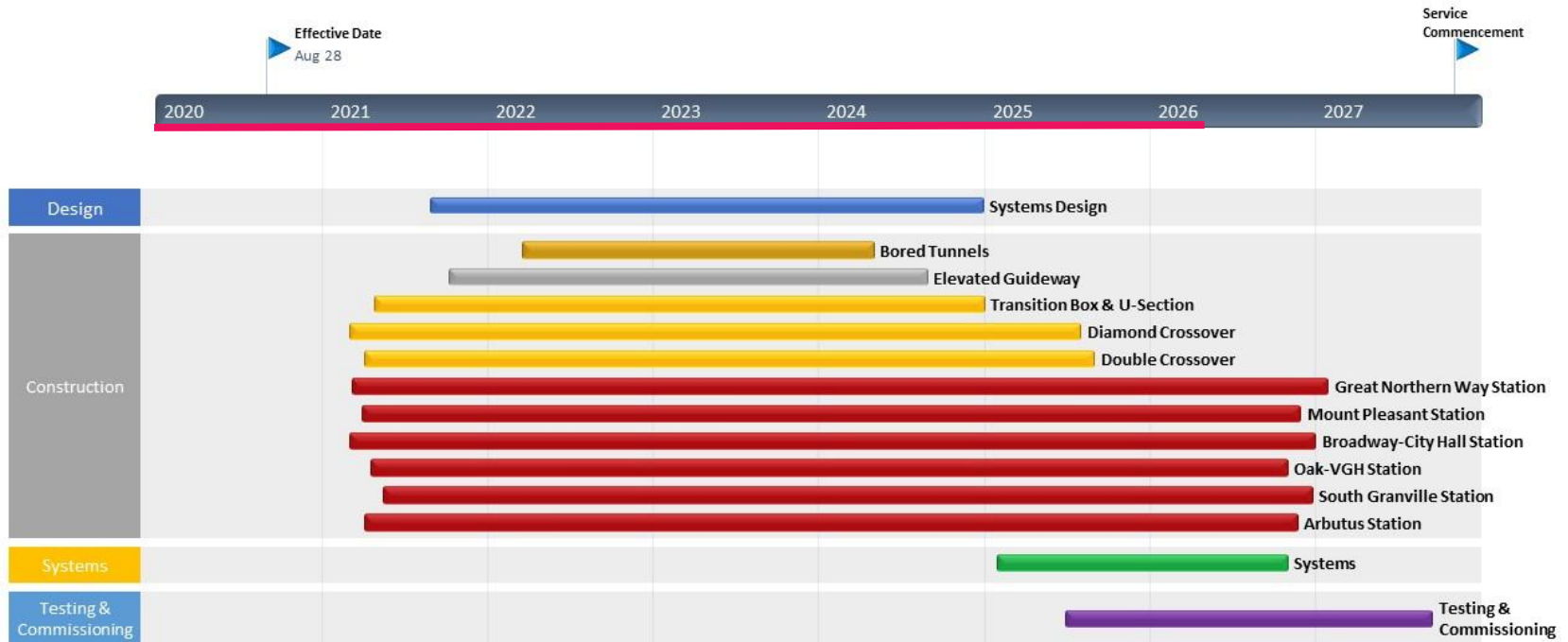
Scope:	<ul style="list-style-type: none"> – Engage with TransLink, the City of Vancouver, PCI, InTransit BC, and other third parties during the Project implementation phase. – TransLink Agreement. <ul style="list-style-type: none"> ○ Broadway Subway Project Support Agreement. – Municipal Agreement. <ul style="list-style-type: none"> ○ Vancouver Municipal Agreement with the City of Vancouver. – Agreements with InTransit BC and TransLink for technical integration of the new Millennium Line Broadway-City Hall Station with the existing Canada Line Broadway-City Hall Station. <ul style="list-style-type: none"> ○ Canada Line Amending Agreement – InTransit BC Phase 1 (between TransLink and InTransit BC). ○ Canada Line Amending Agreement – InTransit BC Phase 2 (between TransLink and InTransit BC) ○ Integration Agreement with TransLink – PCI Agreements. <ul style="list-style-type: none"> ○ South Granville Station Integration Agreement with PCI. ○ Great Northern Way-Emily Carr Station Integration Agreement with PCI. – Accommodation Agreement with Metro Vancouver.
Monthly Highlights:	<ul style="list-style-type: none"> – Held ongoing discussions with TransLink regarding OCC2 implementation and access for equipment installation. – Continued collaboration with Canada Line regarding design and construction integration at Broadway-City Hall Station. – Continued collaboration with PCI regarding design and construction at relevant adjacent development sites.
Three Month Lookahead:	<ul style="list-style-type: none"> – Continue to engage third parties to ensure successful implementation of executed agreements. – Coordinate design and construction interface between BSPC and third parties.

4.7. Public and Stakeholder Engagement

Scope:	<ul style="list-style-type: none"> – Manage ongoing public and stakeholder communications, and community and business relations.
Monthly Highlights:	<ul style="list-style-type: none"> – Provided updates on the progress of utility work, backfilling, and roadworks at Mount Pleasant Station. – Shared information about the arrival of the first test train. – Continued direct outreach and distribution of construction notices regarding micro-piling at Broadway-City Hall Station and utility work at Arbutus Station.
Three Month Lookahead:	<ul style="list-style-type: none"> – Host community outreach activities along the Project alignment. – Continue outreach walks and other frequent direct contact with businesses. – Conduct ongoing regular updates and meetings with the Business Improvement Associations, Traffic Advisory and Arbutus Schools Traffic Liaison groups. – Continue regular interactions with residents and key stakeholders. – Provide progress updates on track installation, work inside the tunnels, and construction of stations. – Continue to distribute construction notifications and respond to public enquiries.

5. Schedule

The following schedule depicts estimated timelines from the contract effective date to the new line's in-service date.



6. Project Photos



Figure 1: Elevated Guideway: Progressing with systems installation.



Figure 2: Great Northern Way-Emily Carr Station: Progressing with installation of the communications systems.



Figure 3: Mount Pleasant Station: Progressing with fit-out of the air conditioning systems.

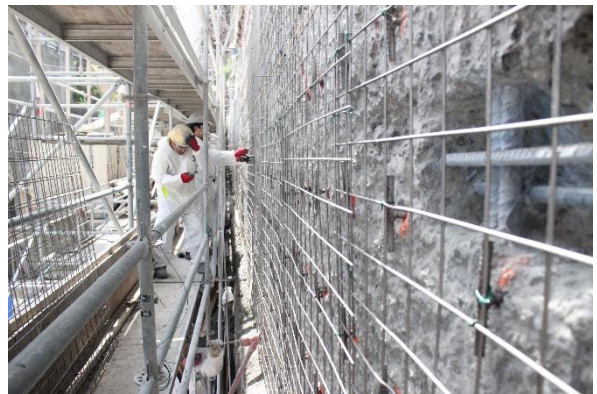


Figure 4: Broadway-City Hall Station: Modifying the existing wall at Broadway-City Hall Station.



Figure 5: Oak-VGH Station: Progressing with installation of the above-ground steel structure.

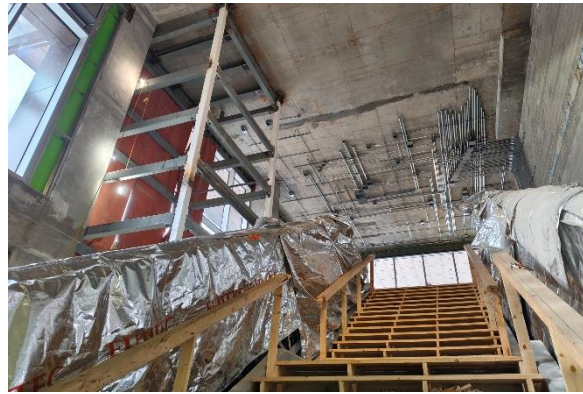


Figure 6: South Granville Station: Progressing with installation of the elevator steel frame at the station entrance.



Figure 7: Arbutus Station: Progressing with installation of the escalators.

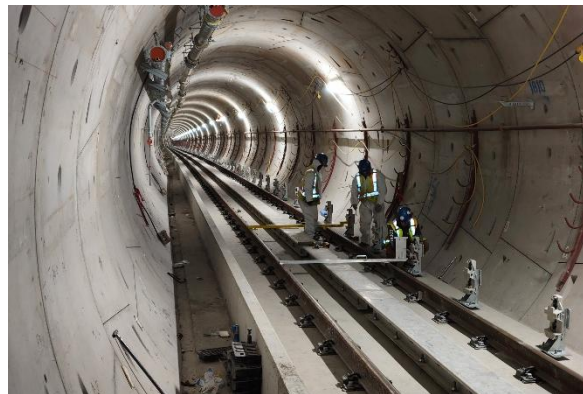


Figure 8: Tunnels: Progressing with installation and alignment of the power rail in the westbound tunnel near South Granville Station.